

RUNWAY SCISSOR LIFT

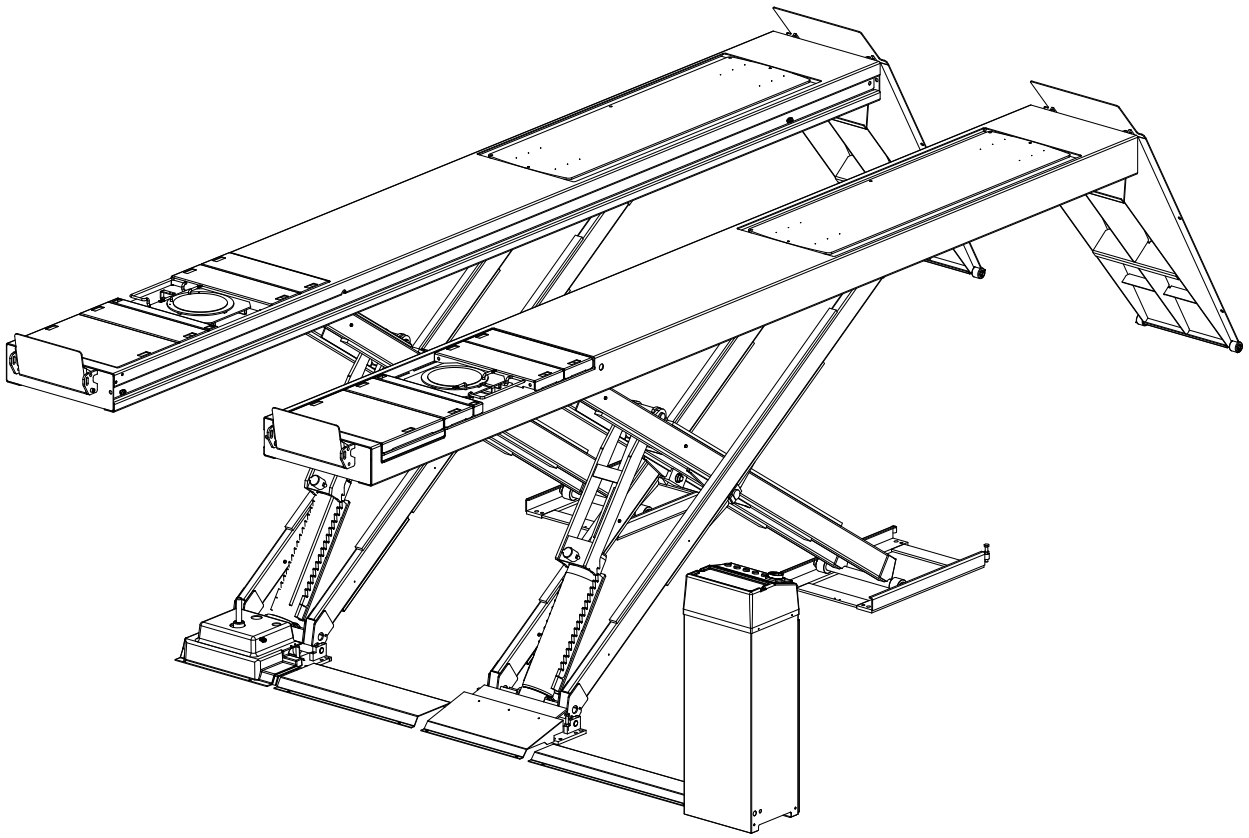
SURFACE AND FLUSH MOUNTED LIFT

(000 SERIES)

14,000 lb. Capacity

(7,000 lbs. per axle)

PARTS BREAKDOWN



IMPORTANT: When ordering parts or requesting service always give exact model and power unit serial number. Model number is shown on nameplate attached to air lock release valve. Power unit serial number is located on side of power unit.

OWNERS RECORD
Complete information
at right and keep in
a safe place.

Date Installed _____

Installed in Bay # _____

Power Unit Serial # _____

Power Unit Model # _____

Lift Serial # _____

Lift Model # _____

NOTE: For replacement parts -See your nearest Rotary Parts Distributor.

PB2-34-0

Rev. D 1/14/2021

SPARE PARTS TABLES

Replace all worn or broken parts with genuine manufacturer's parts.

HOW TO ORDER SPARE PARTS

When ordering spare parts, please always indicate the relevant part number to the authorised dealer. The number is to be found in the relevant table in the Spare Parts manual.

The table (identified by a number and a revision index) must be selected among the ones in the tables summary at the beginning of the spare parts manual.

In order to choose the appropriate table, you must know the following:

- Machine model and serial number (indicated on the serial number plate).
- Functional unit to which the part belongs (please refer to the detailed view in the spare parts manual).

WARNING

For a correct handling of residual risks, pictograms are located on the machine to show the areas subject to risk during operation.

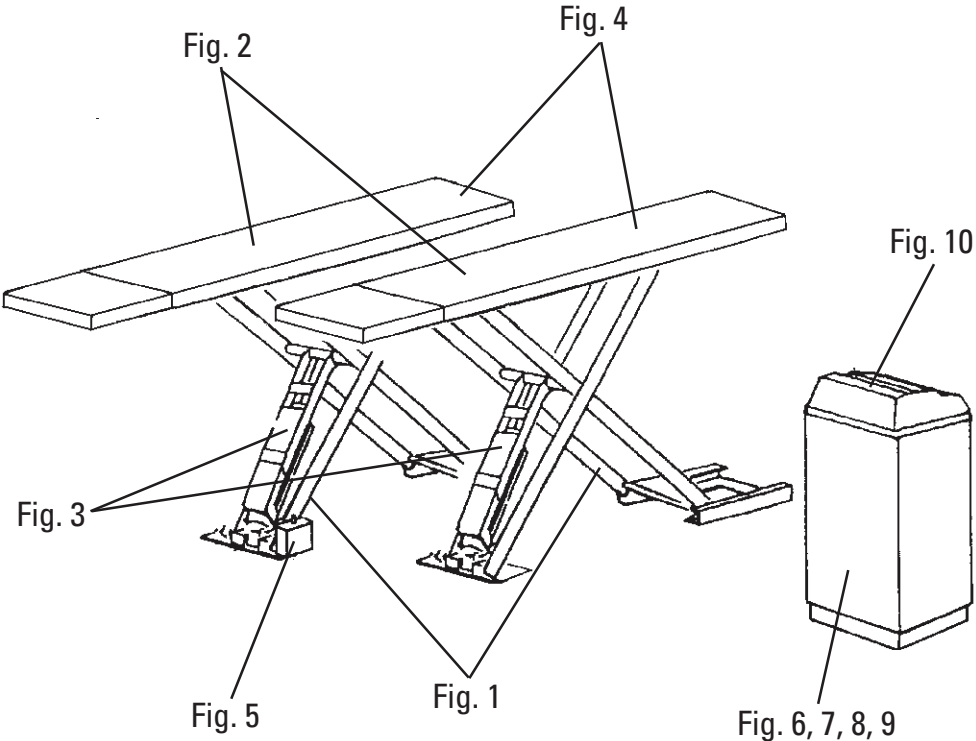
These indications are supplied on self-sticking labels bearing an identification code.

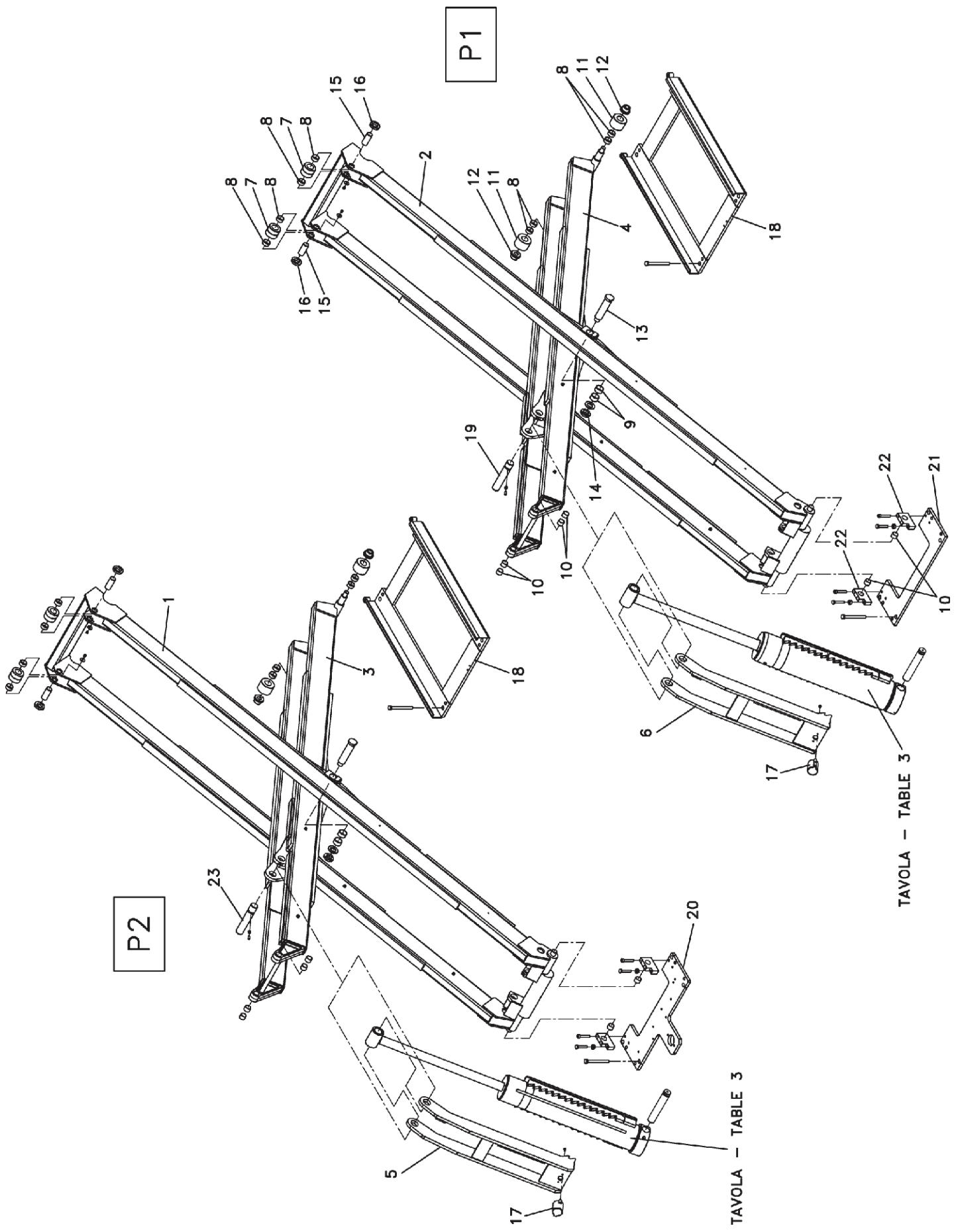
IMPORTANT

Should the labels be lost or become illegible, please order replacements from the manufacturer.

ILLUSTRATED SUMMARY

The figure and the following summary allow quick identification of machine main units and relevant tables for ordering spare parts.





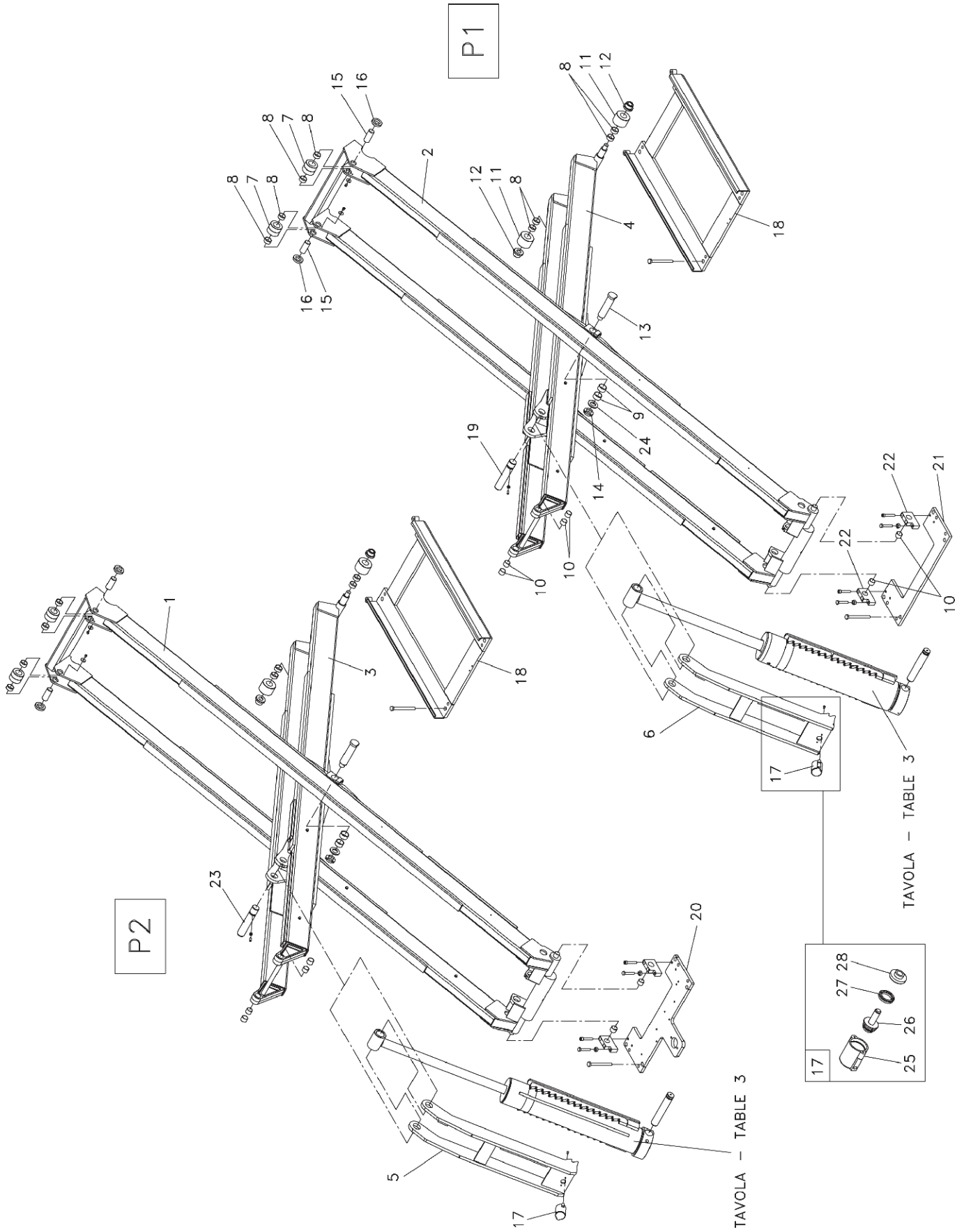
P1

P2

TAVOLA - TABLE 3

TAVOLA - TABLE 3

REF.	CODE	DESCRIPTION	APPLICATION
1.	VS058616030	RH control connecting rod	ALL MODELS (*)
2.	VS058616040	LH control connecting rod	
3.	VS058616050	RH control inner connecting rod (P2)	
4.	VS058616060	LH control inner connecting rod (P1)	
5.	VS058615110	RH hook (P2)	
6.	VS058615010	LH hook (P1)	
7.	VS058115590	Upper roller	
8.	VS630016	Bushing	
9.	VS630105	Bushing	
10.	VS630014	Bushing	
11.	VS058115060	Lower roller	
12.	VS058610020	Spacer	
13.	VS058616020	Central pin	
14.	VS299121	Ring nut	
15.	VS058115080	External pin	
16.	VS058115072	Spacer	
17.	VS058098011	Pneumatic cylinder	
18.	VS058610010	Base	
19.	VS951510200	Pin	
20.	VS058610270	RH Base plate fulcrum	
21.	VS058110792	LH Base plate fulcrum	
22.	VS058610030	Support	
23.	VS951510480	Pin	



REF.	CODE	DESCRIPTION	APPLICATION
1.	VS058616030	RH control connecting rod	ALL MODELS (*)
2.	VS058616040	LH control connecting rod	
3.	VS058616050	RH control inner connecting rod (P2)	
4.	VS058616060	LH control inner connecting rod (P1)	
5.	VS058615110	RH hook (P2)	
6.	VS058615010	LH hook (P1)	
7.	VS058115590	Upper roller	
8.	VS630016	Bushing	
9.	VS630105	Bushing	
10.	VS630014	Bushing	
11.	VS058115060	Lower roller	
12.	VS058610020	Spacer	
13.	VS058616020	Central pin	
14.	VS299121	Ring nut	
15.	VS058115080	External pin	
16.	VS058115072	Spacer	
17.	VS058098011	Pneumatic cylinder	
18.	VS058610010	Base	
19.	VS951510200	Pin	
20.	VS058610270	RH Base plate fulcrum	
21.	VS058110792	LH Base plate fulcrum	
22.	VS058610030	Support	
23.	VS951510480	Pin	
24.	VS236033	Washer	
25.	VS058060011	Piston Body	
26.	VS058060023	Piston	
27.	VS402015	Gasket	
28.	VS058060031	Bushing	

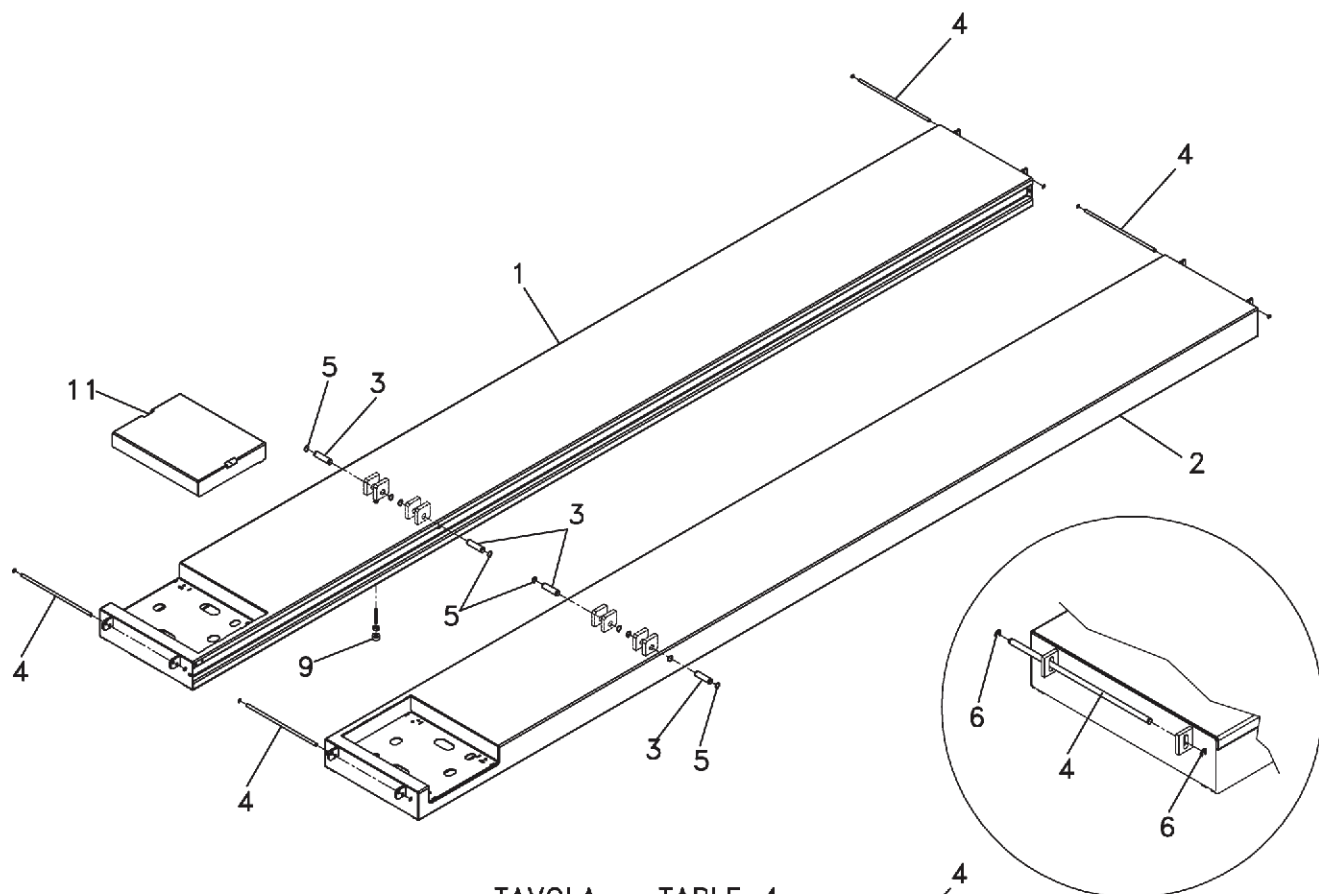
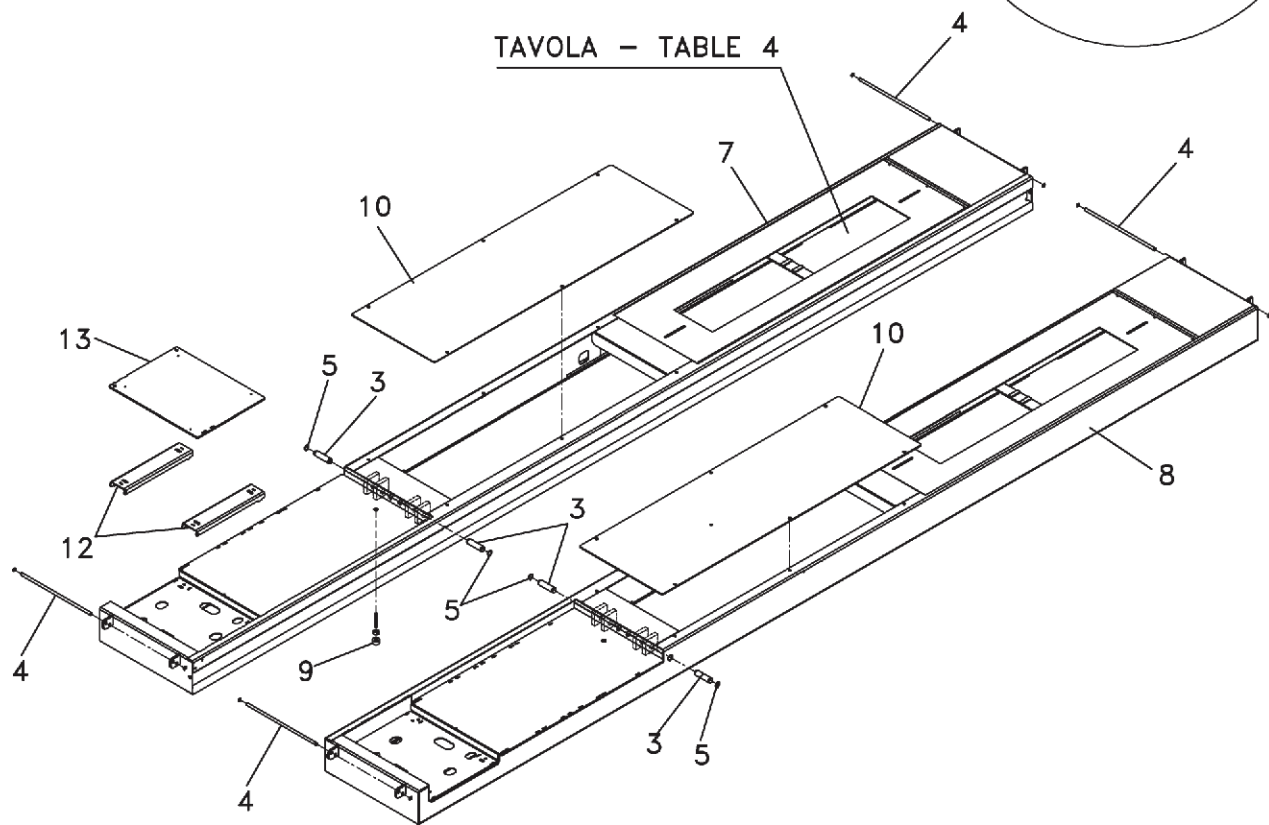


TAVOLA - TABLE 4



REF.	CODE	DESCRIPTION
1.	VS058621610	RH footboard (P2)
2.	VS058621600	LH footboard (P1)
3.	VS058115110	Pin
4.	VS058220040	Pin
5.	VS243070	Seeger
6.	VS299052	Stop Ring
7.	VS058621720	RH footboard (P2)
8.	VS058621710	LH footboard (P1)
9.	XR100012	Pusher
10.	VS058620721	Cover
11.	VS058621220	Cover
12.	VS058621260	Spacer
13.	VS058621250	Plate

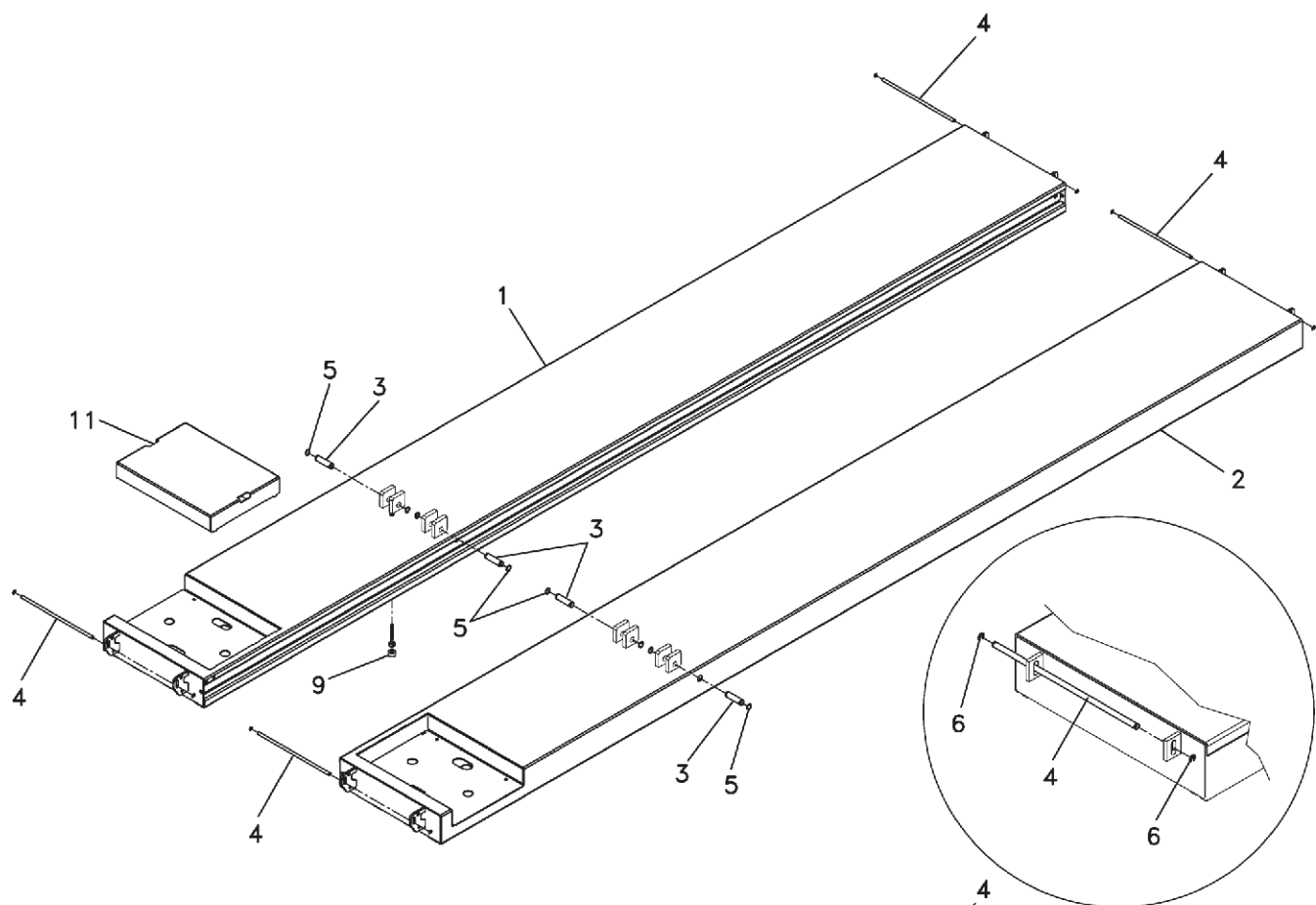
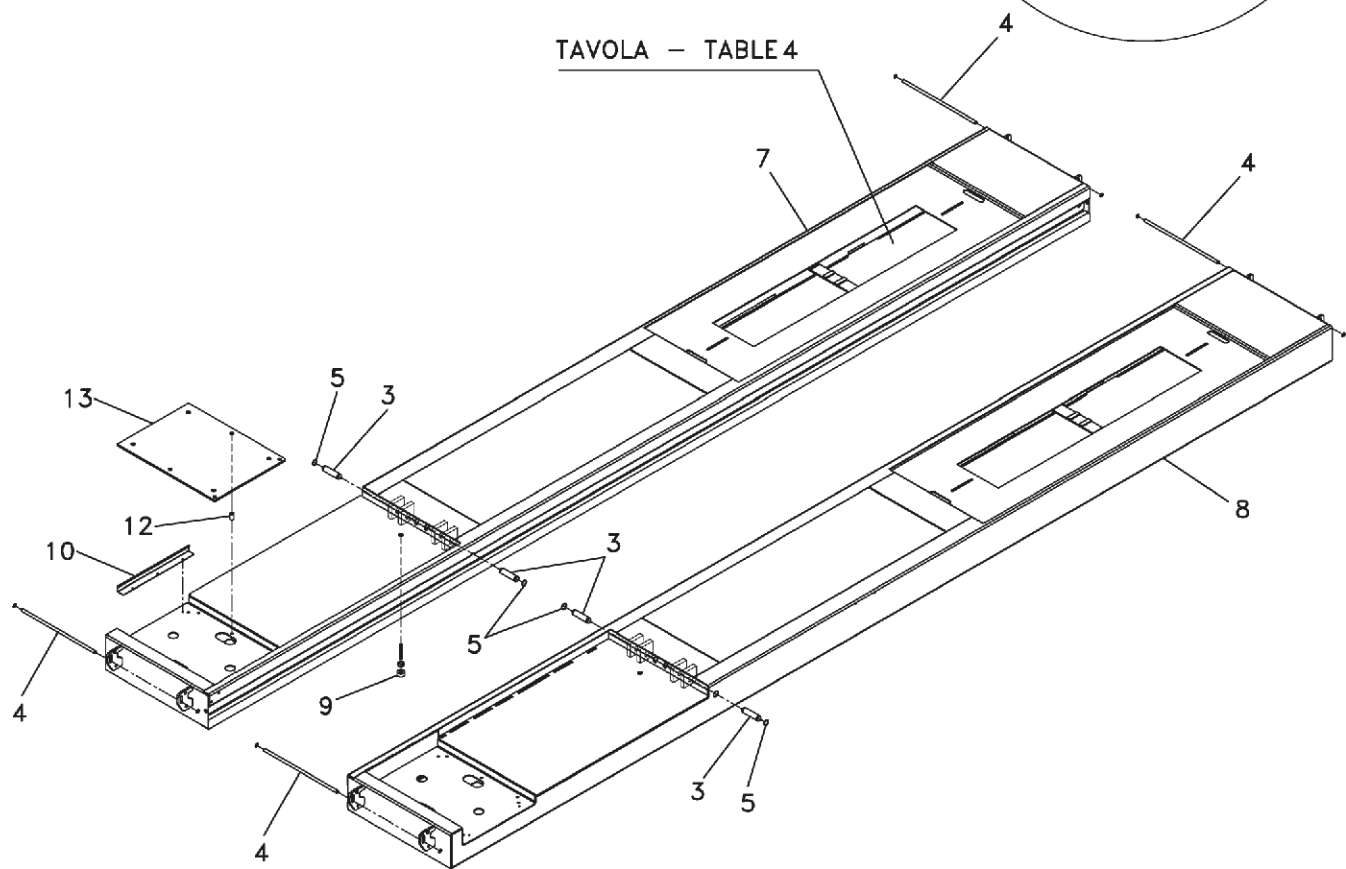
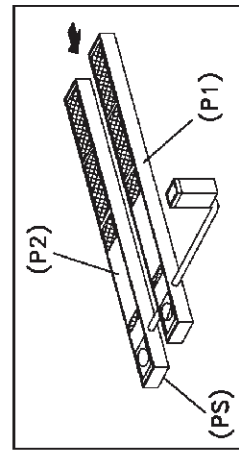
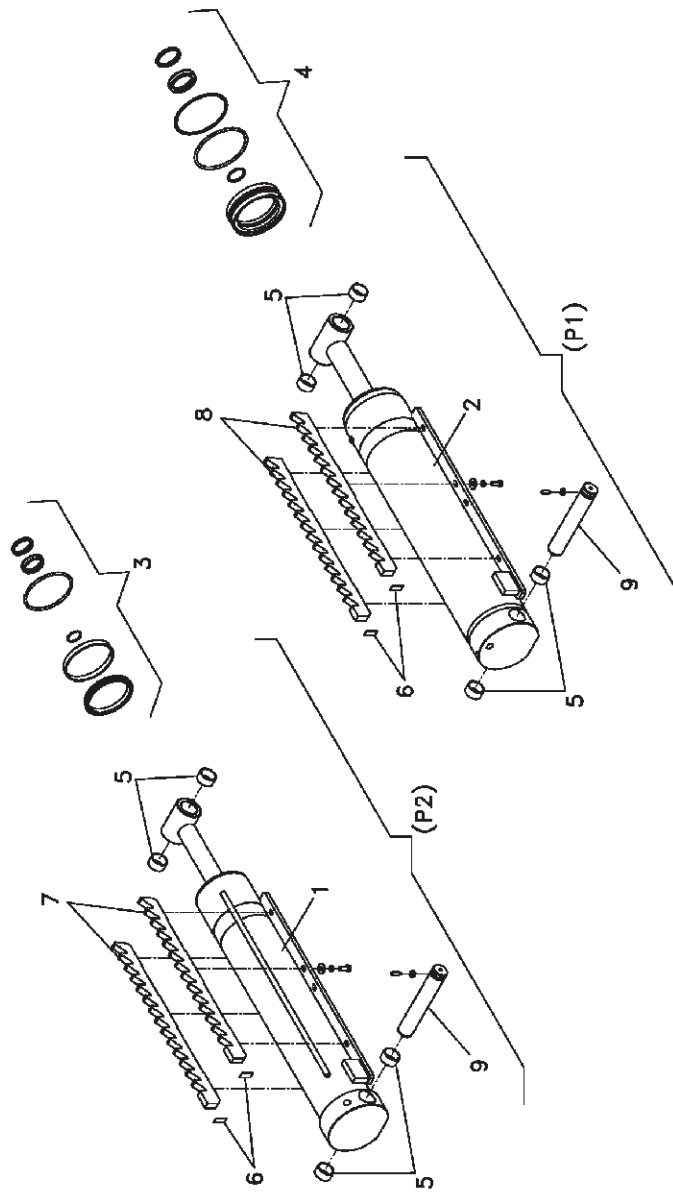
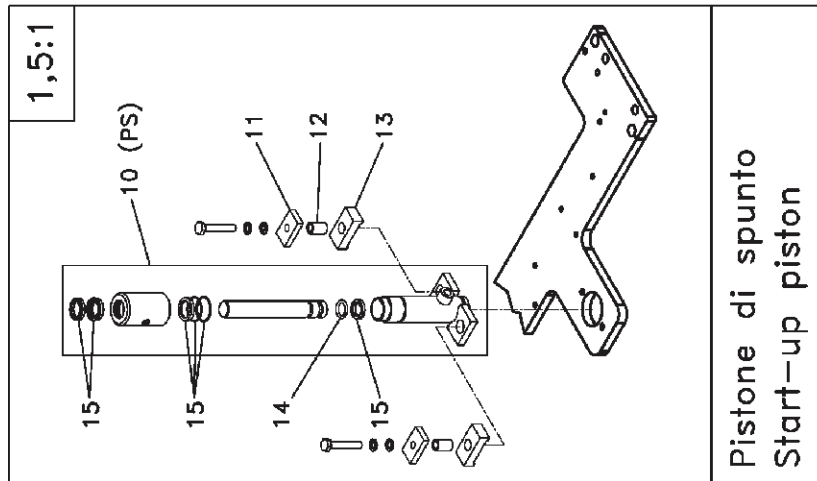


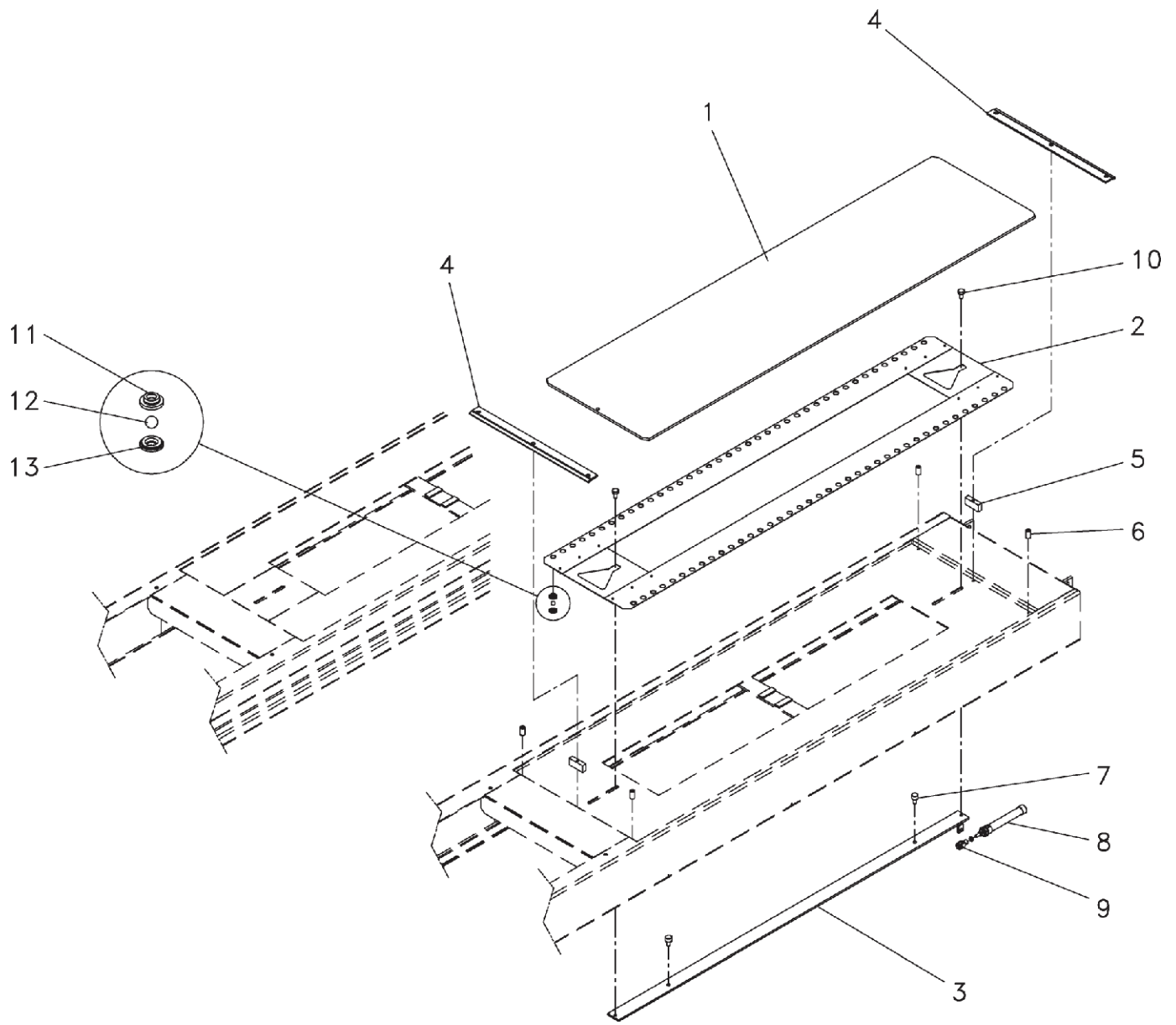
TAVOLA - TABLE 4



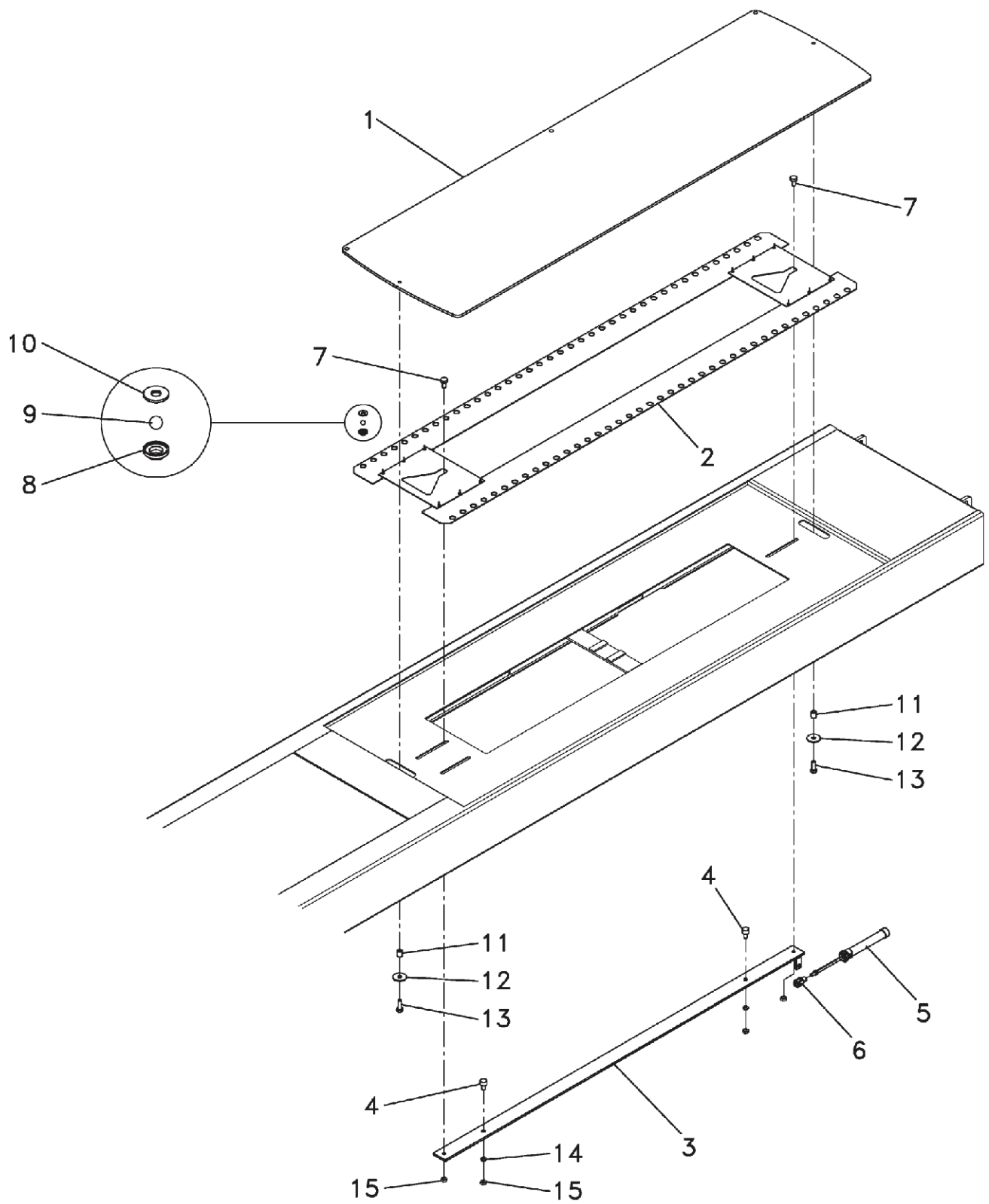
REF.	CODE	DESCRIPTION	APPLICATION
1.	VS058621611	RH footboard (P2)	RAV660.1.55U
2.	VS058621601	LH footboard (P1)	
3.	VS058115110	Pin	ALL MODELS (*)
4.	VS058220040	Pin	
5.	VS243070	Seeger	
6.	VS299052	Stop Ring	
7.	VS058621721	RH footboard (P2)	RAV660.2.55U
8.	VS058621711	LH footboard (P1)	
9.	VS058321840	Pusher	ALL MODELS (*)
10.	VS058620720	Cover	RAV660.2.55U
11.	VS058621221	Cover	RAV660.1.55U
12.	VS058622660	Spacer	RAV660.2.55U
13.	VS058622640	Plate	



REF.	CODE	DESCRIPTION	APPLICATION
1.	VS058601020	Cylinder assembly Ø120 excluding toothed bars (P2)	ALL MODELS (*)
2.	VS058601010	Cylinder assembly Ø130 excluding toothed bars (P1)	
3.	VSGU3973	Gasket kit Ø120	
4.	VSGU3960	Gasket kit Ø130	
5.	VS630019	Bushing	
6.	VS058660470	Spacer	
7.	VS058660170	Toothed bar (P2)	
8.	VS058660060	Toothed bar (P1)	
9.	VS951510070	Pin	
10.	VS058601110	Start-up piston	
11.	VS058560610	Small plate	
12.	VS058660830	Spacer	
13.	VS058560601	Damper	
14.	VS058660820	Stop ring	
15.	VSGU5030	Gasket kit	

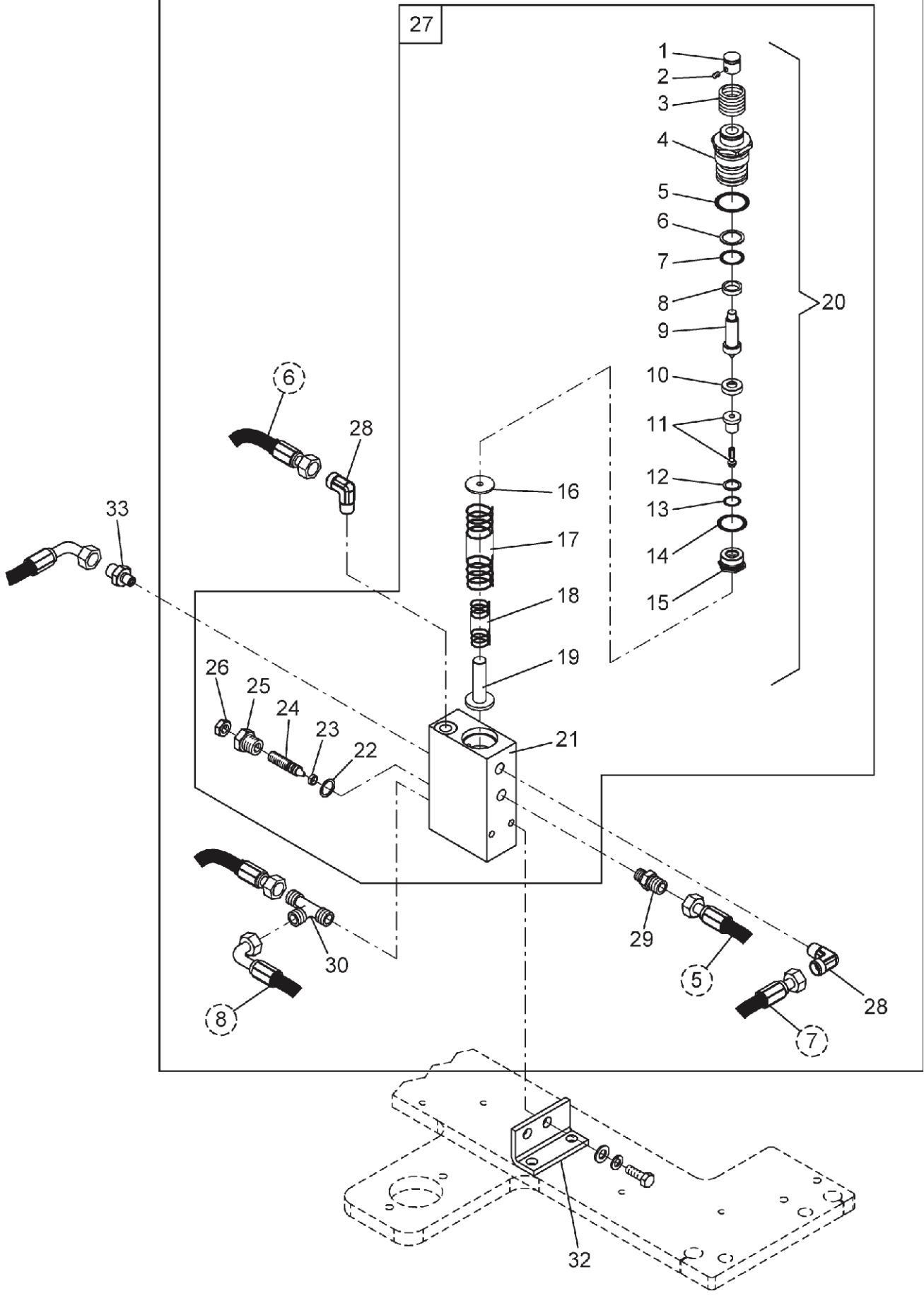


REF.	CODE	DESCRIPTION	APPLICATION
1.	VS058720120	Board trim	ALL MODELS (*)
2.	VS058720150	Frame for spheres	
3.	VS058720160	Rod	
4.	VS058720190	Board trim blocking plate	
5.	VS058321721	Rectangular spacer	
6.	VS058321730	Spacer	
7.	VS058321750	Board trim blocking pin	
8.	VS321014	Pneumatic cylinder	
9.	VS321007	Cylinder fork	
10.	VS058321740	Board trim rod pin	
11.	VS058321470	Sphere support	
12.	VS699031	Sphere	
13.	VS058321480	Sphere support	

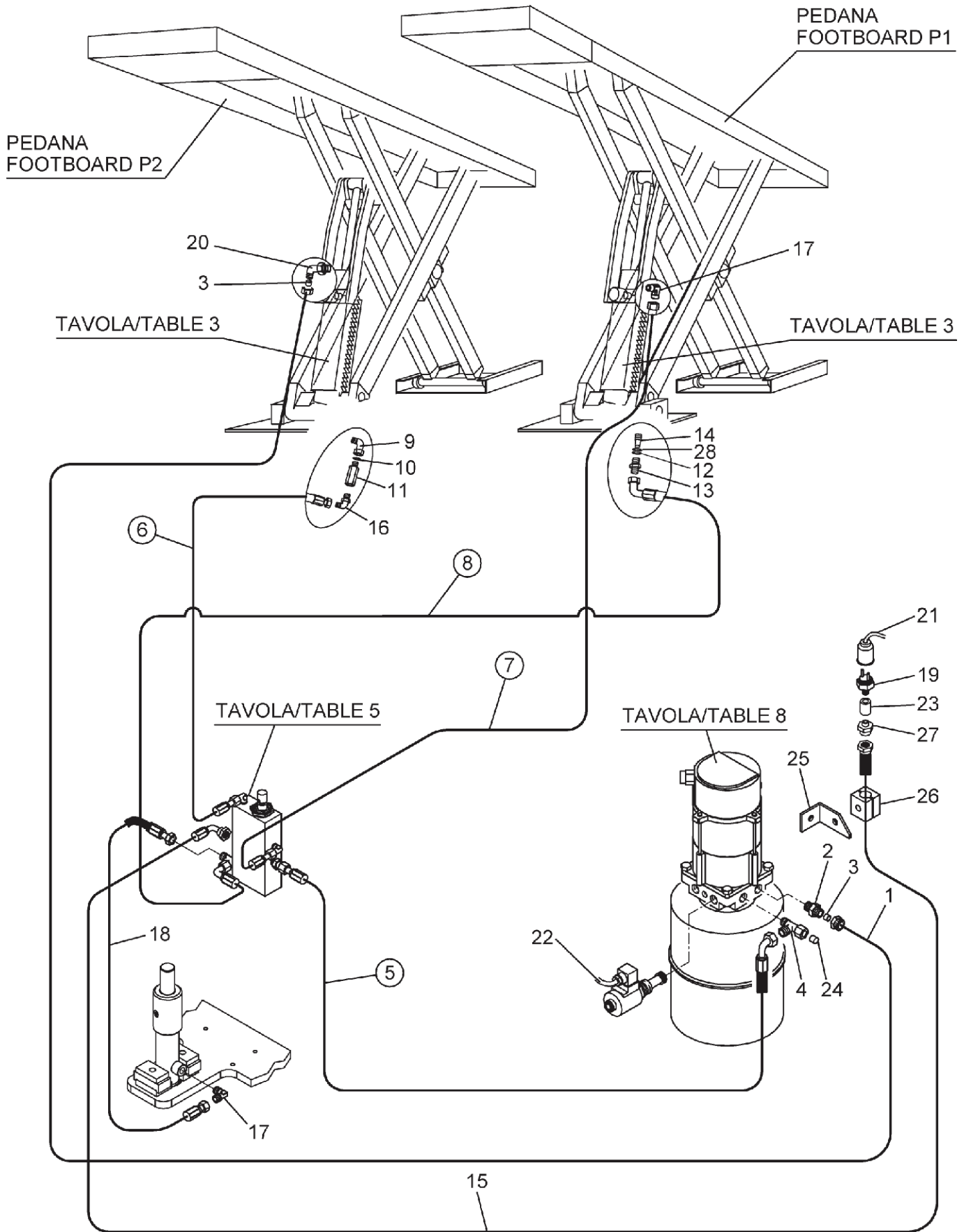


REF.	CODE	DESCRIPTION	APPLICATION
1.	VS058622600	Board trim	ALL MODELS (*)
2.	VS058622610	Frame for spheres	
3.	VS058622650	Rod	
4.	VS058321750	Board trim blocking plate	
5.	VS321014	Pneumatic cylinder	
6.	VS321007	Cylinder fork	
7.	VS058321740	Board trim rod pin	
8.	VS058321470	Sphere support	
9.	VS699031	Sphere	
10.	VS058321480	Sphere support	
11.	VS058724130	Spacer	
12.	VS237059	Washer	
13.	VS203193	Screw	
14.	VS238007	Washer	
15.	VS226011	Nut	

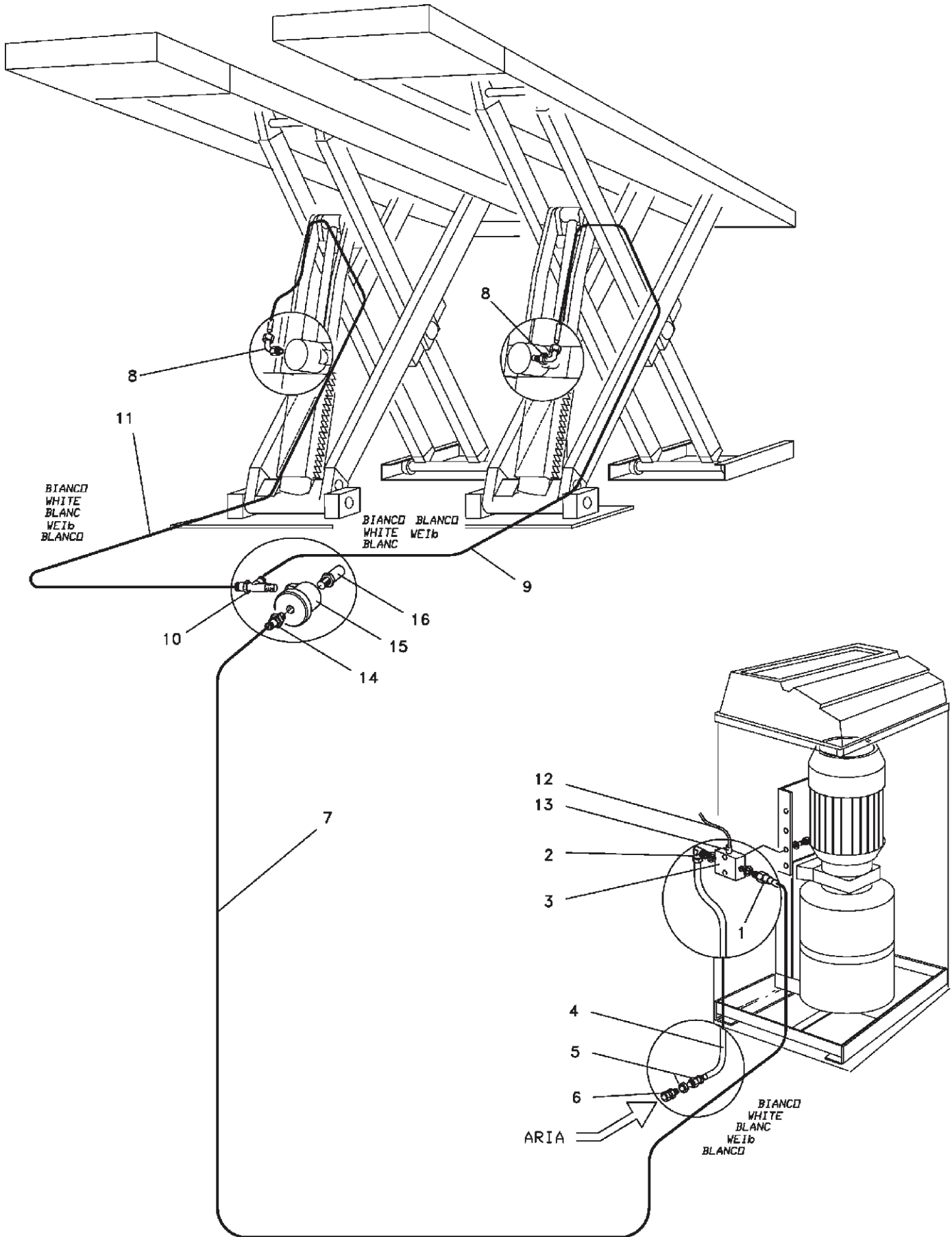
31



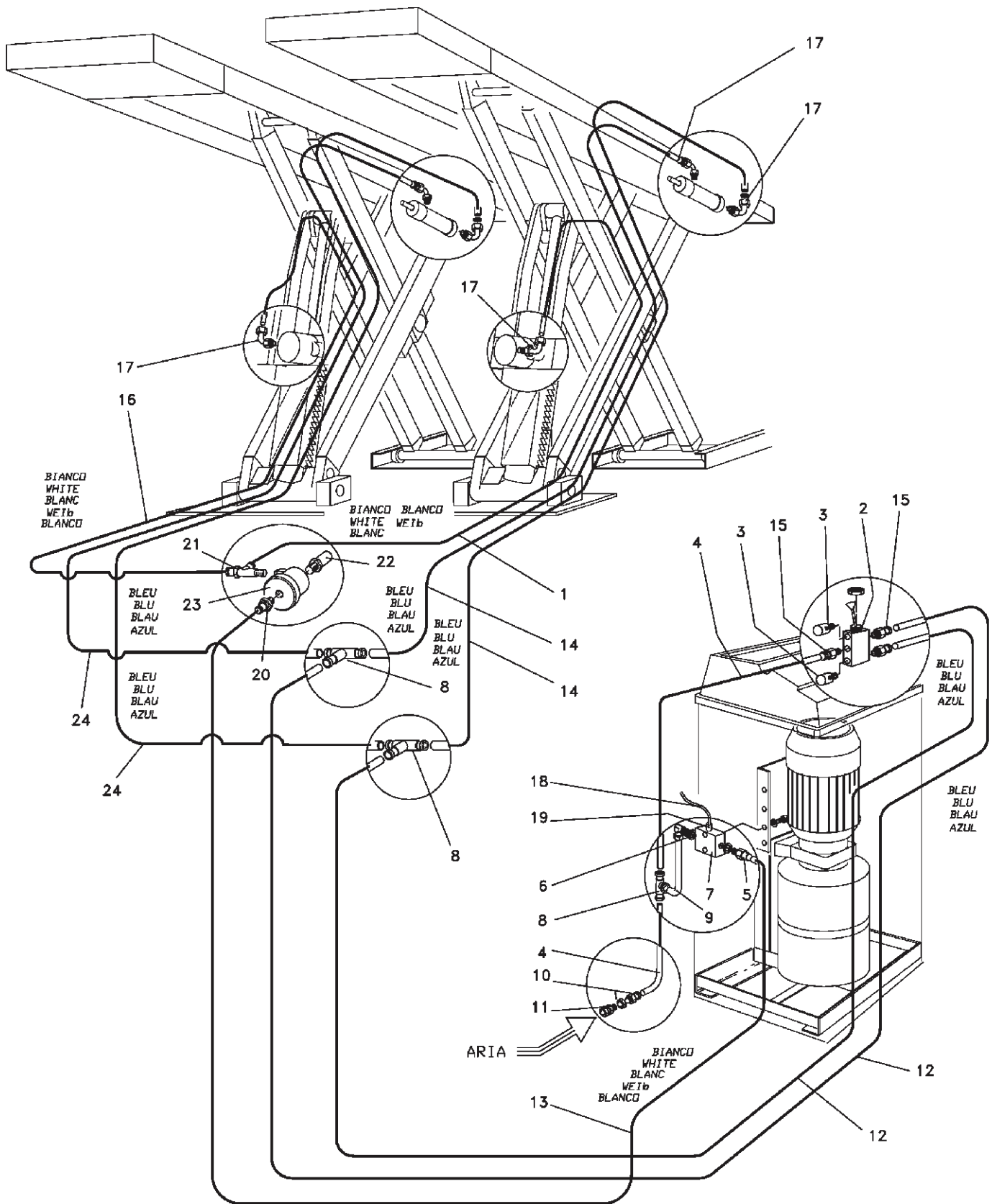
REF.	CODE	DESCRIPTION	APPLICATION
1.	VS058060464	Push rod cover	ALL MODELS (*)
2.	VS210415	Screw	
3.	VS058060880	Protective sheath	
4.	VS058260480	Ring nut with hole Ø1	
5.	VS401101	OR Gasket	
6.	VS058070280	Antiextrusion ring PKB	
7.	VS401045	Antiextrusion ring OR	
8.	VS058070160	CSC Gasket	
9.	VS058260342	Push rod Ø12	
10.	VS058060861	Spacer	
11.	VS058060660	Valve	
12.	VS058070290	Antiextrusion ring PKB	
13.	VS401004	OR Gasket	
14.	VS401010	OR Gasket	
15.	VS058060871	Internal ring nut	
16.	VS058060430	Spring centering cover	
17.	VS950001180	Outer spring	
18.	VS950001400	Inner spring	
19.	VS058060640	Spring guide	
20.	VS058207572	Valve push rod group kit	
21.	VS058260310	Block	
22.	VS399021	Bonded washer	
23.	VS416300	Gasket	
24.	VS058060451	Adjustment screw	
25.	VS058060510	Ring nut	
26.	VS227029	Nut	
27.	VS058201044	Re-alignment valve assembly	
28.	VS305024C	90° hydraulic union	
29.	VS304036C	Straight hydraulic union	
30.	VS305034C	"T" union	
31.	VS058697800	Valve kit with unions	
32.	VS058110142	Fixing plate	
33.	VS312103	Nipples	



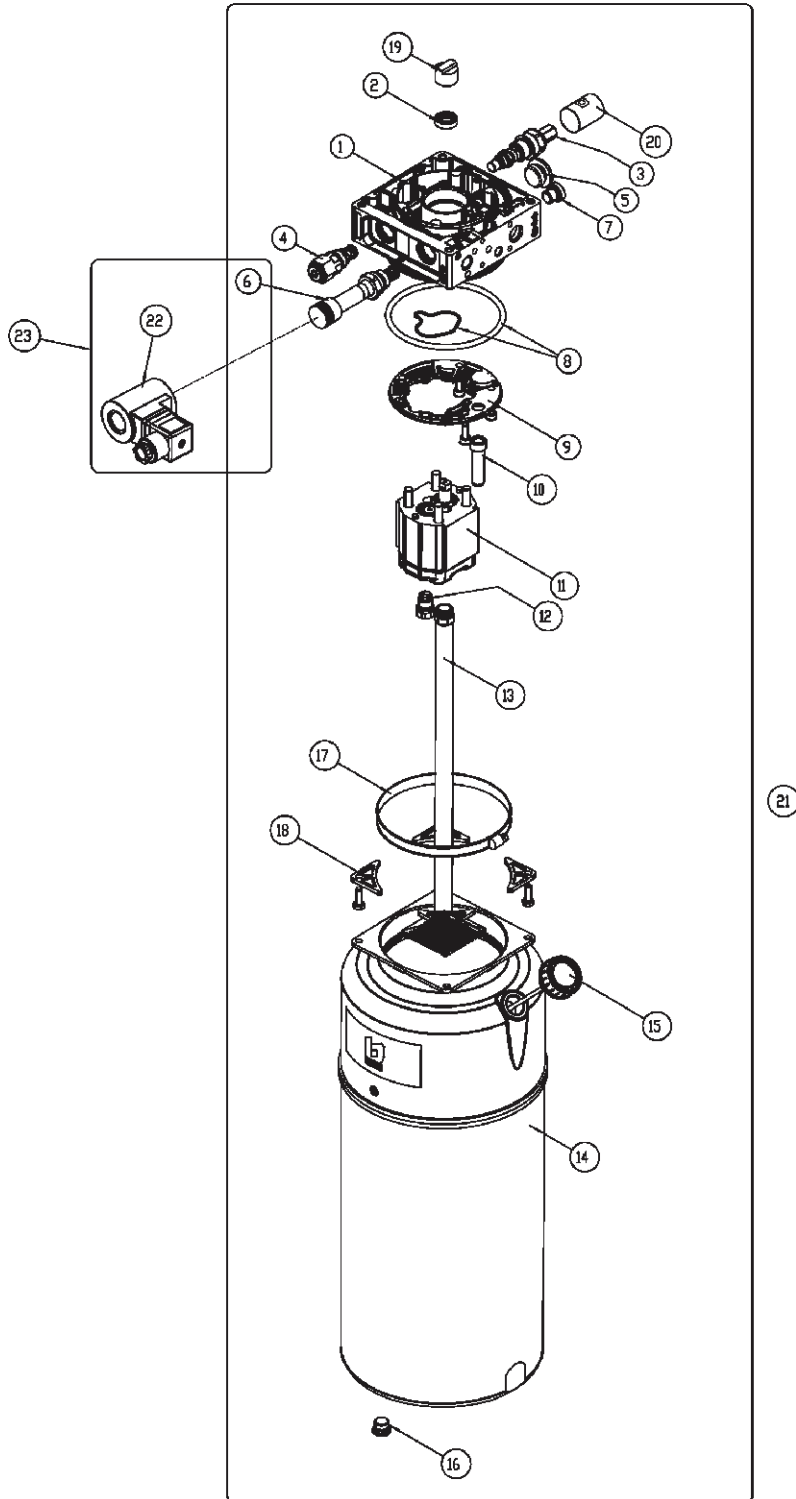
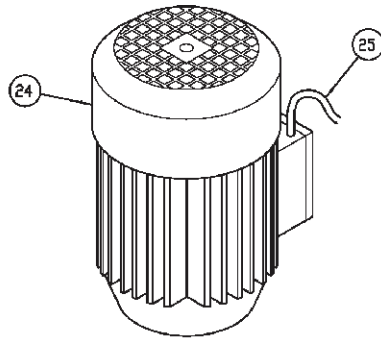
REF.	CODE	Description	APPLICATION
1.	VS317015	Tube 8x6 L = 5000	ALL MODELS (*)
2.	VS304025	Pipe	
3.	VS399002	Bush	
4.	VS305034	T fitting	
5.	VS058760570	Tube	
6.	VS058660530	Tube	
7.	VS058082001	Intermediate tube	
8.	VS058760580	Tube	
9.	VS312114	"L" Fitting	
10.	VS401009	OR121 Gasket	
11.	VS951010200	Safety valve	
12.	VS399021	Bonded washer	
13.	VS312104	Nipples	
14.	VS309538	Valve	
15.	VS058760610	Tube	
16.	VS312107	"L" Fitting	
17.	VS305024C	"L" fitting	
18.	VS058760600	Tube	
19.	VS399210	Pressure switch	
20.	VS305004	Fitting	
21.	-	CP Electric cable	
22.	-	EV1 cable	
23.	VS312159	Adapter	
24.	VS311103	Plug	
25.	VS048421090	Bracket	
26.	VS399234	Clamp	
27.	VS312103	Nipples	
28.	VS239022	Washer	



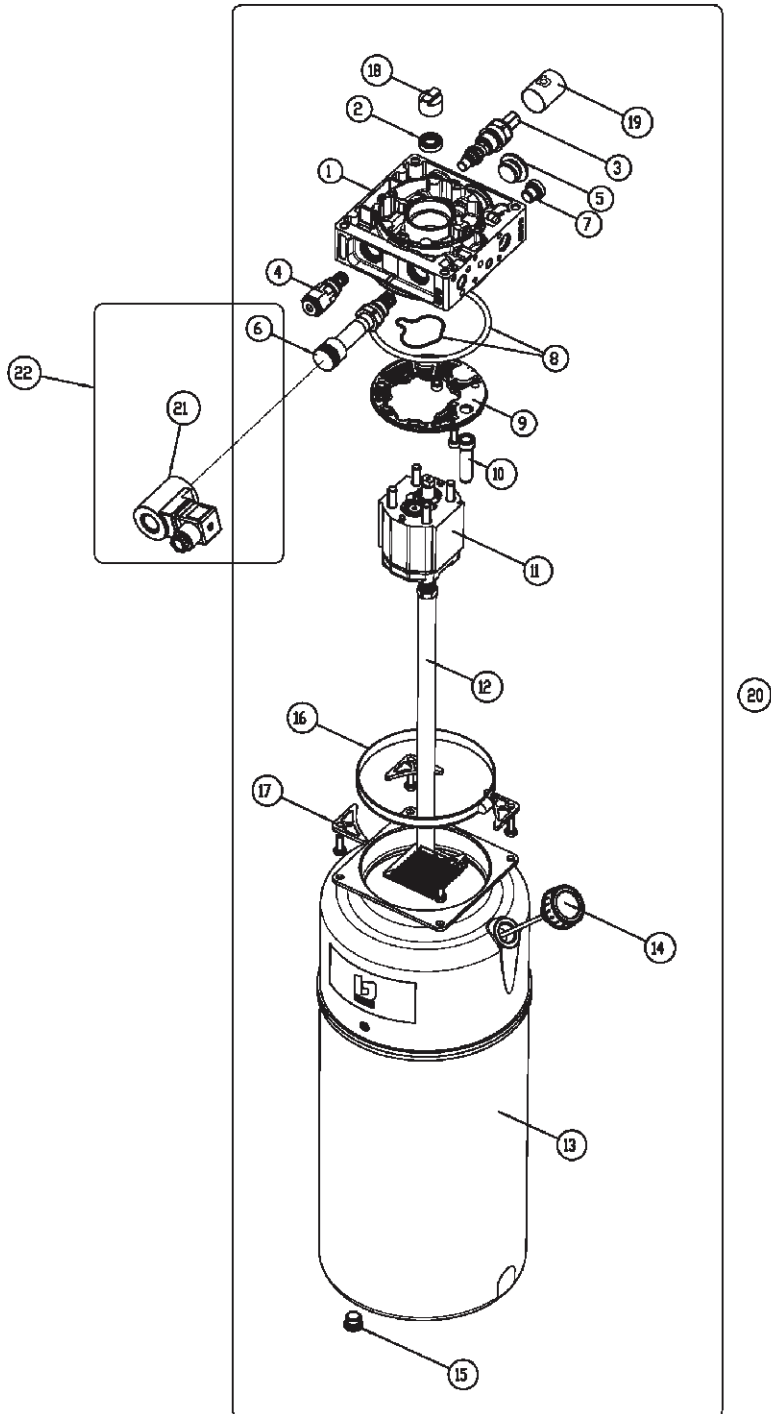
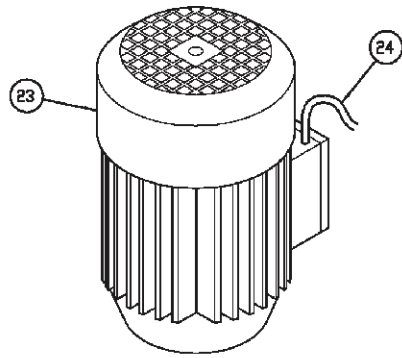
REF.	CODE	DESCRIPTION	APPLICATION
1.	VS325006	Fitting	ALL MODELS (*)
2.	VS325066	90° Fitting	
3.	VS322021	Solenoid valve	
4.	VS317001	Rilsan tube 6x4 L=1000	
5.	VS325056	Plate passing fitting	
6.	VS302002	Milled nut fitting	
7.	VS317001	Rilsan tube 6x4 L=3000	
8.	VS325017	L fitting	
9.	VS317001	Rilsan tube 6x4 L=3500	
10.	VS325077	Fitting	
11.	VS317001	Rilsan tube 6x4 L=4500	
12.	-	Electrical cable EV2	
13.	VS322022	Connector	
14.	VS325055	Fitting	
15.	VS309017	Fast relief valve	
16.	VS399064	Silencer	



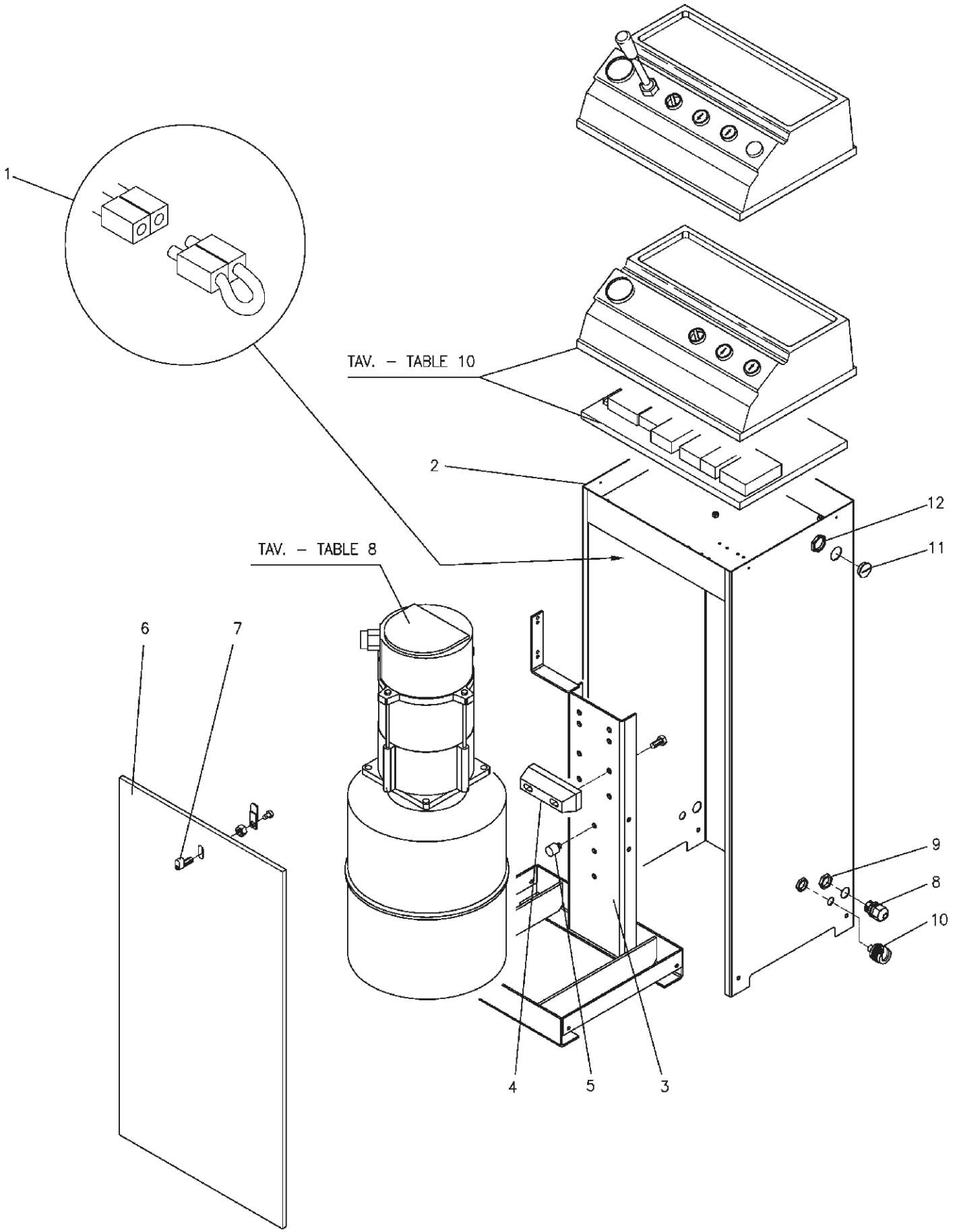
REF.	CODE	DESCRIPTION	APPLICATION
1.	VS317001	Rilsan tube 6x4 L=3500	ALL MODELS (*)
2.	VS309079	Direction control valve	
3.	VS399066	Silencer	
4.	VS317001	Rilsan tube 6x4 L=1000	
5.	VS325006	Fitting	
6.	VS325066	Fitting	
7.	VS322021	Solenoid valve	
8.	VS325036	Fitting	
9.	VS317001	Rilsan tube 6x4 L=150	
10.	VS325056	Plate passing fitting	
11.	VS302002	Milled nut fitting	
12.	VS317013	Rilsan tube 6x4 L=3500	
13.	VS317001	Rilsan tube 6x4 L=3000	
14.	VS317013	Rilsan tube 6x4 L=8000	
15.	VS325022	Fitting	
16.	VS317001	Rilsan tube 6x4 L=4500	
17.	VS325017	L fitting	
18.	-	EV2 Electric cable	
19.	VS322022	Connector	
20.	VS325055	Fitting	
21.	VS325077	Fitting	
22.	VS399064	Silencer	
23.	VS309017	Fast relief valve	
24.	VS317013	Rilsan tube 6x4 L=7500	



REF.	CODE	DESCRIPTION	APPLICATION
1.	VS058071112	Casing	ALL MODELS (*)
2.	VS058070320	Oil seal	
3.	VS058071160	Maximum valve	
4.	VS058071150	Non return valve + plug	
5.	VS048370040	Plug	
6.	VS058071170	Solenoid valve mechanical part	
7.	VS058071580	Plug	
8.	VS058770220	Gasket kit	
9.	VS058770150	Filter	
10.	VS058070310	PVC tube	
11.	VS058071531	Pump	
12.	VS048370150	Valve	
13.	VS070070170	Suction group	
14.	VS058371041	Tank	
15.	VS058770170	Exhaust plug	
16.	VS070171090	Plug	
17.	VS058371060	Clamp	
18.	VS058071590	Support	
19.	VS146771070	Coupling	
20.	VS150671040	Sheating	
21.	VS324259	Hydraulic control unit	
22.	VS324075	Spool with connector	
23.	VS058171240	Solenoid valve	
24.	VS900004110	Motor	
25.	-	Motor cable	

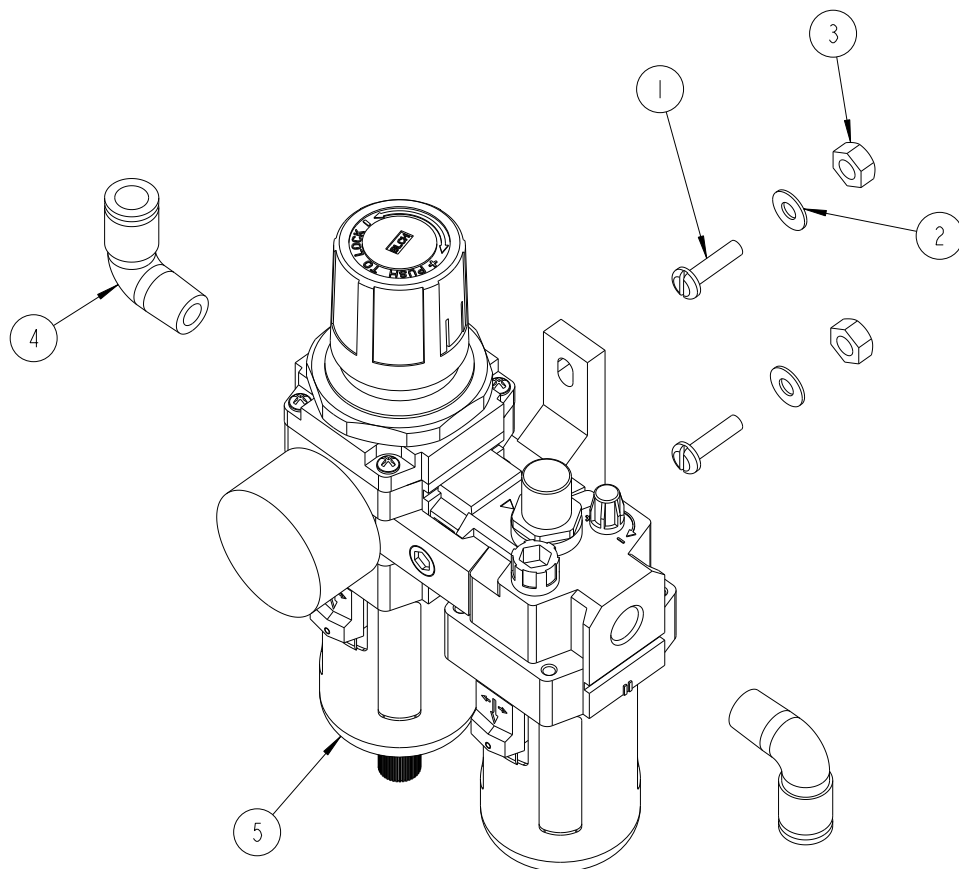


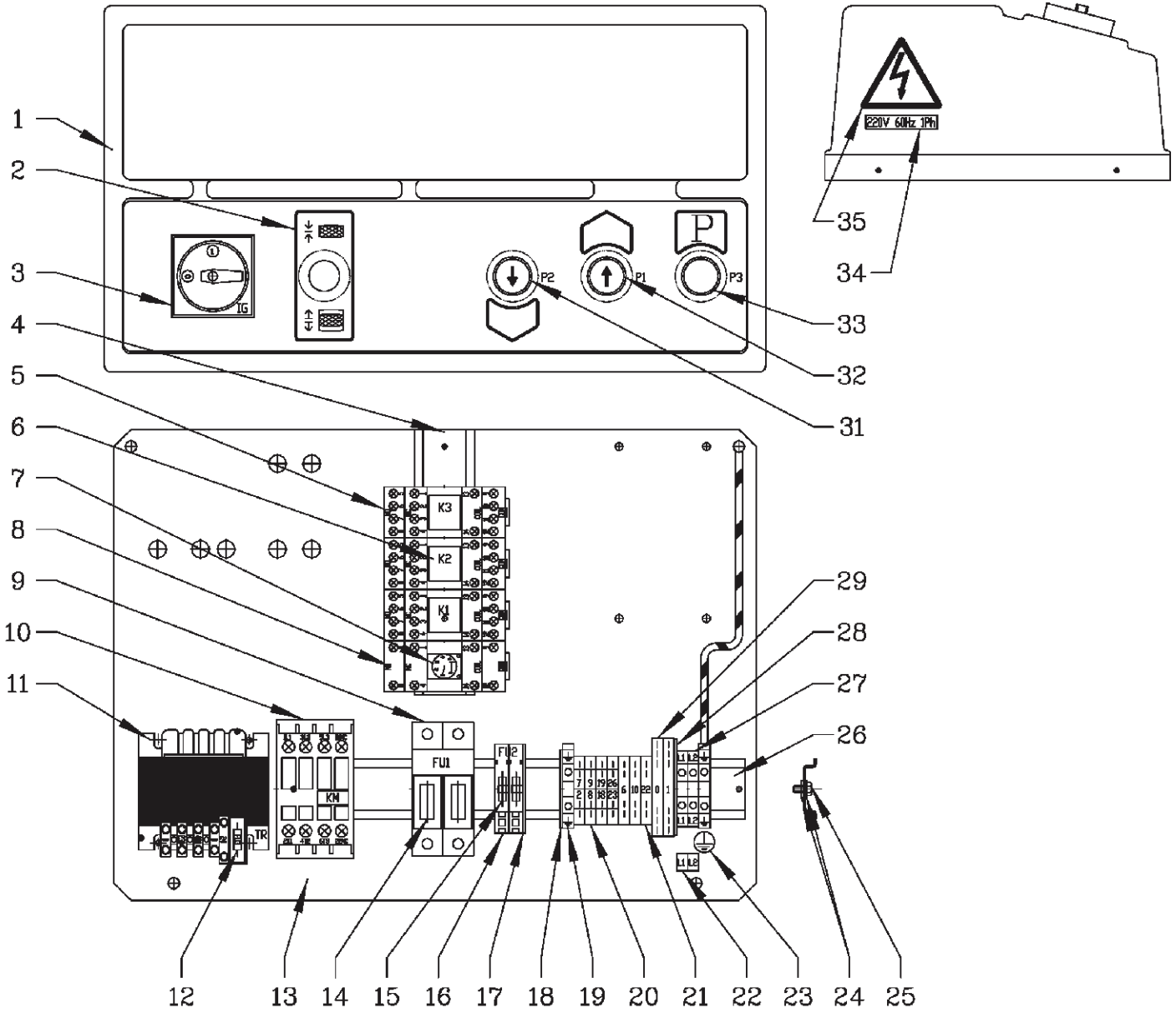
REF.	CODE	DESCRIPTION	APPLICATION
1.	VS058071112	Casing	ALL MODELS (*)
2.	VS058070320	Oil seal	
3.	VS058071160	Maximum valve	
4.	VS058071150	Non return valve + plug	
5.	VS048370040	Plug	
6.	VS058071170	Solenoid valve mechanical part	
7.	VS058071580	Plug	
8.	VS058770220	Gasket kit	
9.	VS058770150	Filter	
10.	VS058070310	PVC tube	
11.	VS060071591	Pump (60Hz)	
12.	VS058770200	Suction group	
13.	VS058371041	Tank	
14.	VS058770170	Exhaust plug	
15.	VS070171090	Plug	
16.	VS058371060	Clamp	
17.	VS058071590	Support	
18.	VS146771070	Coupling	
19.	VS150671040	Sheating	
20.	VS324258	60 Hz Hydraulic control unit	
21.	VS324075	Spool with connector	
22.	VS058171240	Solenoid valve	
23.	VS900004110	Motor	
24.	-	Motor cable	



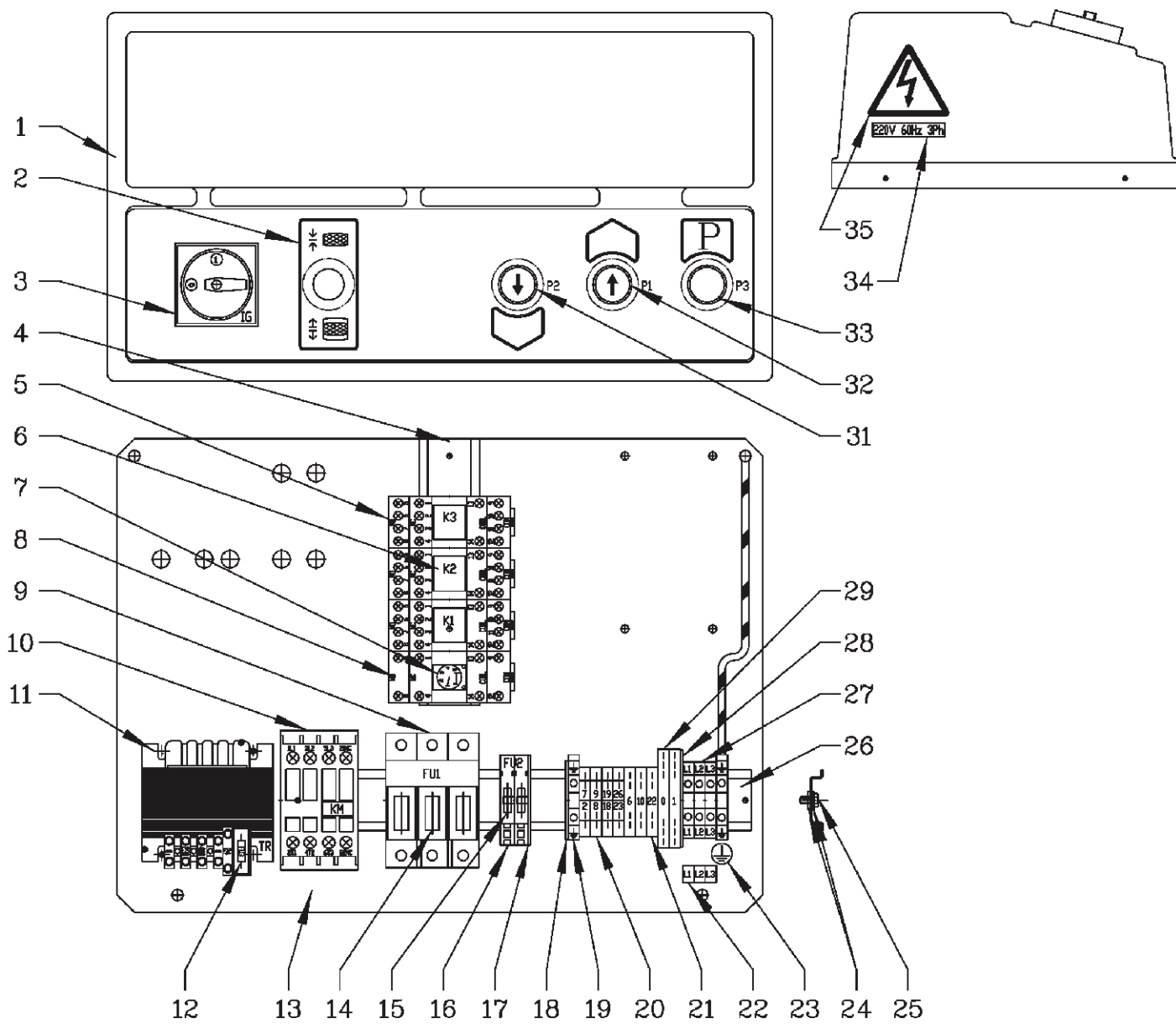
REF.	CODE	DESCRIPTION	APPLICATION
1.	-	Cable for disable CP1 pressure switch	ALL MODELS (*)
2.	VS058360371	Control unit casing	
3.	VS058060093	Control unit support	
4.	VS06001076	Support spacer	
5.	VS058162310	Spacer plug	
6.	VS058360381	Control unit hatch	
7.	VS905125	Control unit closing set	
8.	VS599142	Cable tie	
9.	VS599243	Nut	
10.	VS302002	Fitting with milled nut	
11.	VS599240	Plug	
12.	VS599249	Nut	

ITEM	QTY	PART #	DESCRIPTION
1.	2	40030	#10-24NC x 3/4" Lg. Slotted PHMS, PLTD
2.	2	40785	#10 SAE Flat Washer, PLTD
3.	2	40811	#10-24NC Hex Nylon Insert Locknut
4.	2	FC5185-96	Male Elbow
5.	1	S130080	Filter Regulator Lubricator (FRL)

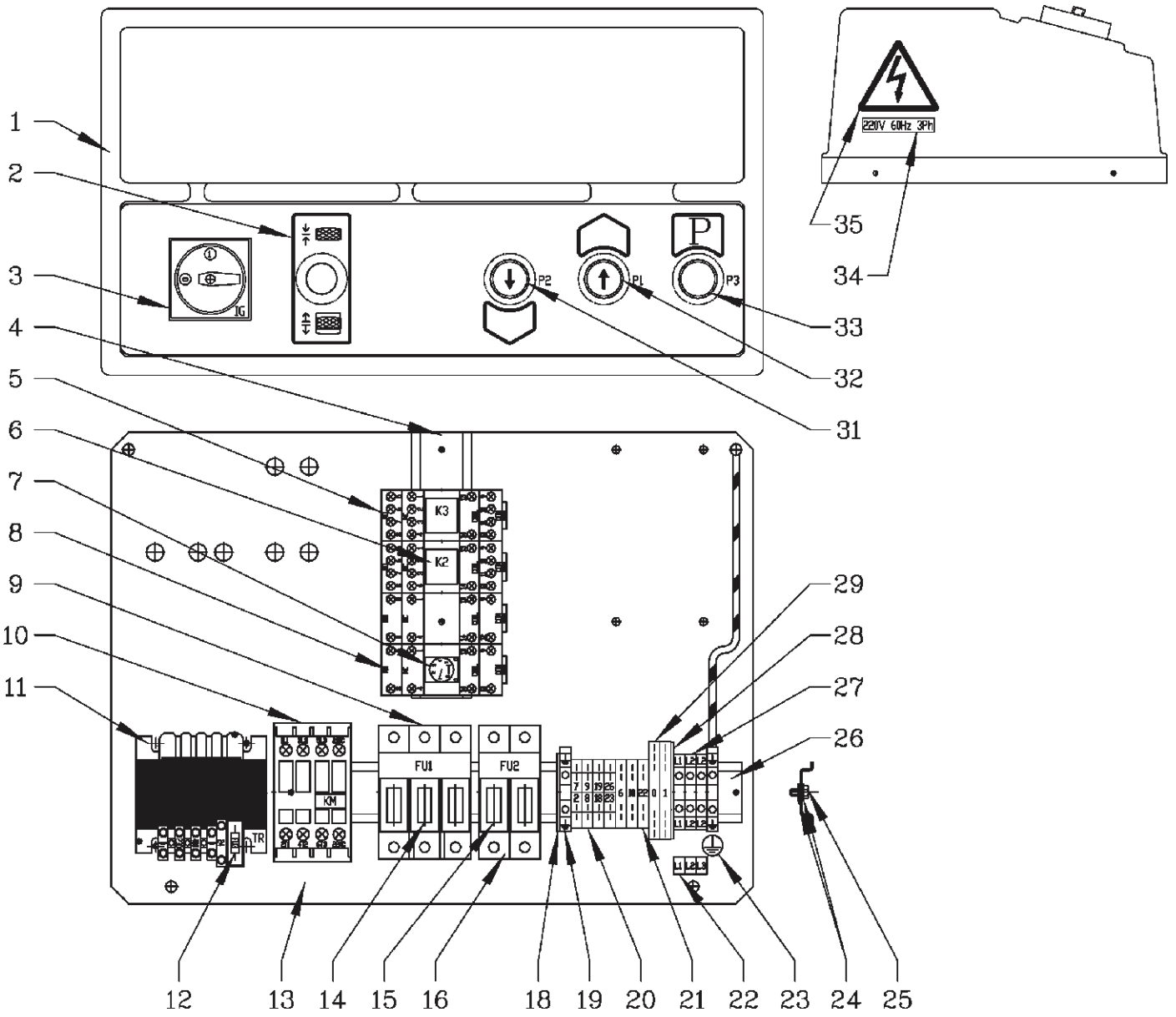




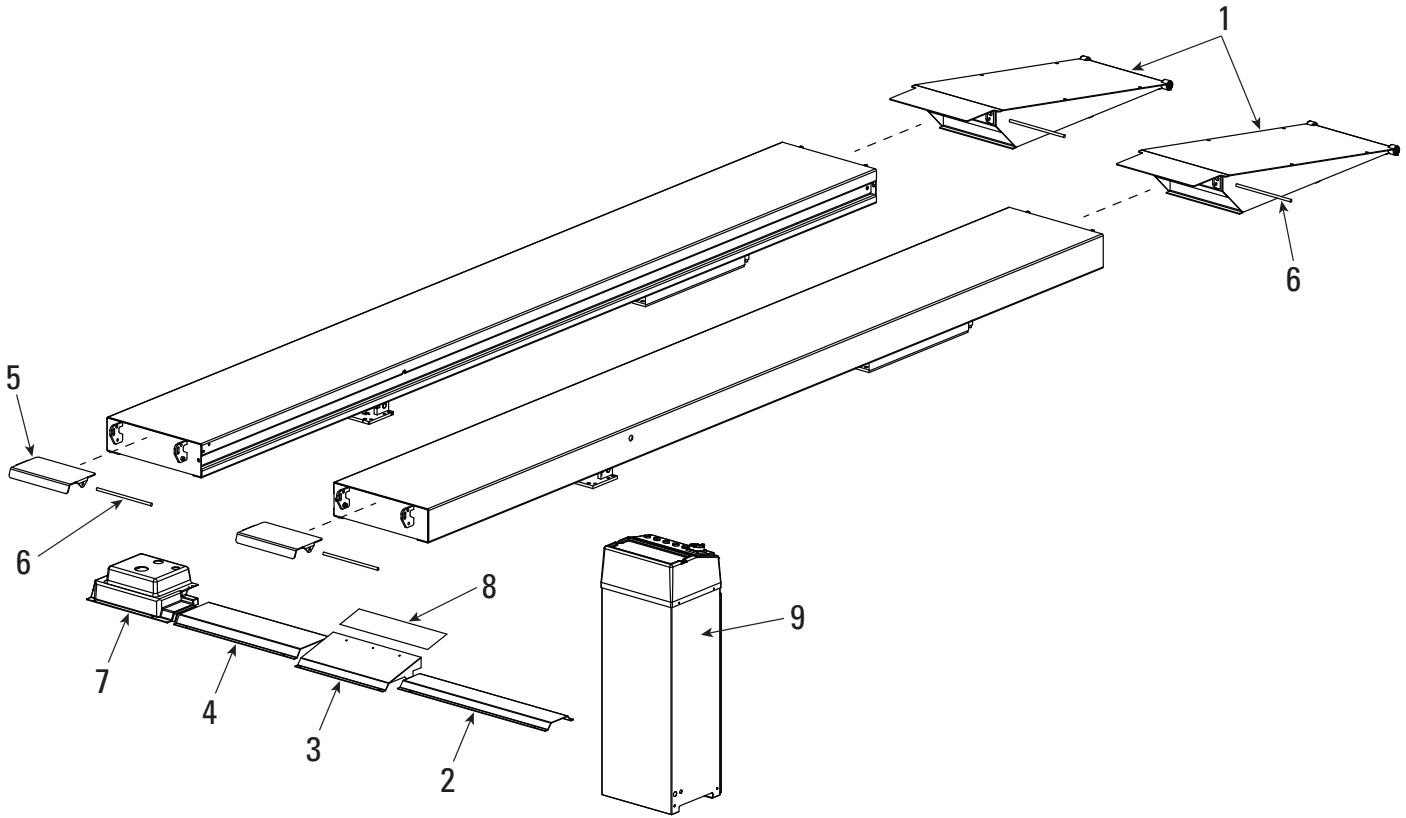
REF.	CODE		APPLICATION
-	VS058603160	Electrical cabinet	ALL MODELS (*)
1.	VS058060110	Control unit cover	
2.	VS999910750	Control box cover label	
3.	VS518257	Main switch	
4.	VS058365661	Components base	
5.	VS557028	Relay socket (4 contacts) K1 K2 K3 base	
6.	VS557027	4 contacts K1 K2 K3 24VAC relay	
7.	VS521102	24VAC 2 contacts T timer	
8.	VS557031	T relay socket (4 contacts)	
9.	VS515040	Double pole Fuse carrier	
10.	VS522142	12.5kW 400V Contactor	
11.	VS528072	50VA transformer	
12.	VS507122	5x20F 3A 250V fast-acting fuse	
13.	VS058065161	Plate for equipment	
14.	VS507120	10x38 20A 600V Time-delay fuse	
15.	VS507123	5x20F 1A 250V fast-acting fuse	
16.	VS510111	Fuse carrier terminal block	
17.	VS510112	Terminal plate	
18.	VS510209	Terminal plate	
19.	VS510150	Yellow green terminal block	
20.	VS510175	AFO.2/1+1 terminal block	
21.	VS510176	AFO.2/2+2 terminal block	
22.	VS999918000	Feed cable connection table	
23.	VS599462	Ground symbol label	
24.	VS239018	Screw	
25.	VS220005	Screw	
26.	VS058066250	Components base	
27.	VS510108	Feed terminal	
28.	VS510179	Terminal plate	
29.	VS510178	PDF Terminal block	
30.			
31.	VS517072AS	Descent button	
32.	VS517069AS	Ascent button	
33.	VS517073AS	Stationnement button	
34.	VS999912530	220V 60Hz 1Ph plate	
35.	VS99990758	Warning plate	
-	VS058665220	Cable for disable CP1 pressure switch	
-	VS058765320	EV2 Electrical cable	
-	VS058765310	EV1 Electrical cable	
-	VS058665210	CP pressure switch electric cable	
-	VS058765260	Motor cable	



REF.	CODE	DESCRIPTION	APPLICATION
-	VS058603150	Electrical cabinet	ALL MODELS (*)
1.	VS058060110	Control unit cover	
2.	VS999910750	Control box cover label	
3.	VS518257	Main switch	
4.	VS058365661	Components base	
5.	VS557028	Relay socket (4 contacts) K1 K2 K3 base	
6.	VS557027	4 contacts K1 K2 K3 24VAC relay	
7.	VS521102	24VAC 2 contacts T timer	
8.	VS557031	T relay socket (4 contacts)	
9.	VS515039	Triple pole Fuse carrier	
10.	VS522143	7.5kW 400V Contactor	
11.	VS528072	50VA transformer	
12.	VS507122	5x20F 3A 250V fast-acting fuse	
13.	VS058065161	Plate for equipment	
14.	VS507120	10x38 20A 600V Time-delay fuse (220V 60Hz)	
	VS507127	10x38 12A 600V Time-delay fuse (380V 60Hz)	
15.	VS507123	5x20F 1A 250V fast-acting fuse	
16.	VS510111	Fuse carrier terminal block	
17.	VS510112	Terminal plate	
18.	VS510209	Terminal plate	
19.	VS510150	Yellow green terminal block	
20.	VS510175	AFO.2/1+1 terminal block	
21.	VS510176	AFO.2/2+2 terminal block	
22.	VS999917880	Feed cable connection table	
23.	VS599462	Ground symbol label	
24.	VS239018	Screw	
25.	VS220005	Screw	
26.	VS058066250	Components base	
27.	VS510108	Feed terminal	
28.	VS510179	Terminal plate	
29.	VS510178	PDF Terminal block	
30.			
31.	VS517072AS	Descent button	
32.	VS517069AS	Ascent button	
33.	VS517073AS	Stationnement button	
34.	VS999912510	220V 60Hz 3Ph plate	
	VS999912520	380V 60Hz 3Ph plate	
35.	VS99990758	Warning plate	
-	VS058665220	Cable for disable CP1 pressure switch	
-	VS058765320	EV2 Electrical cable	
-	VS058765310	EV1 Electrical cable	
-	VS058665210	CP pressure switch electric cable	
-	VS058765250	Motor cable	



REF.	CODE	DESCRIPTION	APPLICATION
-	VS058603270	Electrical cabinet	ALL MODELS (*)
1.	VS058060110	Control unit cover	
2.	VS999910750	Control box cover label	
3.	VS518257	Main switch	
4.	VS058365661	Components base	
5.	VS557028	Relay socket (4 contacts) K1 K2 K3 base	
6.	VS557027	4 contacts K1 K2 K3 24VAC relay	
7.	VS521102	24VAC 2 contacts T timer	
8.	VS557031	T relay socket (4 contacts)	
9.	VS515039	Triple pole Fuse carrier	
10.	VS522143	7.5kW 400V Contactor	
11.	VS528074	50VA transformer	
12.	VS507122	5x20F 3A 250V fast-acting fuse	
13.	VS058065161	Plate for equipment	
14.	VS507119	10x38 8A 600V Time-delay fuse	
15.	VS507121	10x38 1A 600V fast-acting fuse	
16.	VS510111	Fuse carrier terminal block	
17.			
18.	VS510209	Terminal plate	
19.	VS510150	Yellow green terminal block	
20.	VS510175	AFO.2/1+1 terminal block	
21.	VS510176	AFO.2/2+2 terminal block	
22.	VS999917880	Feed cable connection table	
23.	VS599462	Ground symbol label	
24.	VS239018	Screw	
25.	VS220005	Screw	
26.	VS058066250	Components base	
27.	VS510108	Feed terminal	
28.	VS510179	Terminal plate	
29.	VS510178	PDF Terminal block	
30.			
31.	VS517072AS	Descent button	
32.	VS517069AS	Ascent button	
33.	VS517073AS	Stationnement button	
34.	VS999917990	575V 60Hz 3Ph plate	
35.	VS99990758	Warning plate	
-	VS058665220	Cable for disable CP1 pressure switch	
-	VS058765320	EV2 Electrical cable	
-	VS058765310	EV1 Electrical cable	
-	VS058665210	CP pressure switch electric cable	
-	VS058765250	Motor cable	



REF.	PART NO.	DESCRIPTION
1.	SRS1600/R	Standard Ramp Kit
	SRS1600/I	Flush Mount Transition Plates Kit
	VSS601A12	Extended Ramp Kit
2.	VS058110060	External cover
3.	VS058110070	Left base cover
4.	VS058110052	Inner cover
5.	VS058680870	Vehicle stop
6.	VS058220040	Pin
7.	VS058610280	Right base cover
8.	VS058110120	Rubber cover
9.	SRS1602.55U/P	Control cabinet

Notes:

Vehicle Service GroupSM
2700 Lanier Drive
Madison, IN 47250, USA
1-800-640-5438
www.vsgdover.com



© **Vehicle Service GroupSM**
All Rights Reserved. Unless otherwise
indicated, **Vehicle Service GroupSM**,
and all other trademarks are property
of Dover Corporation and its affiliates.