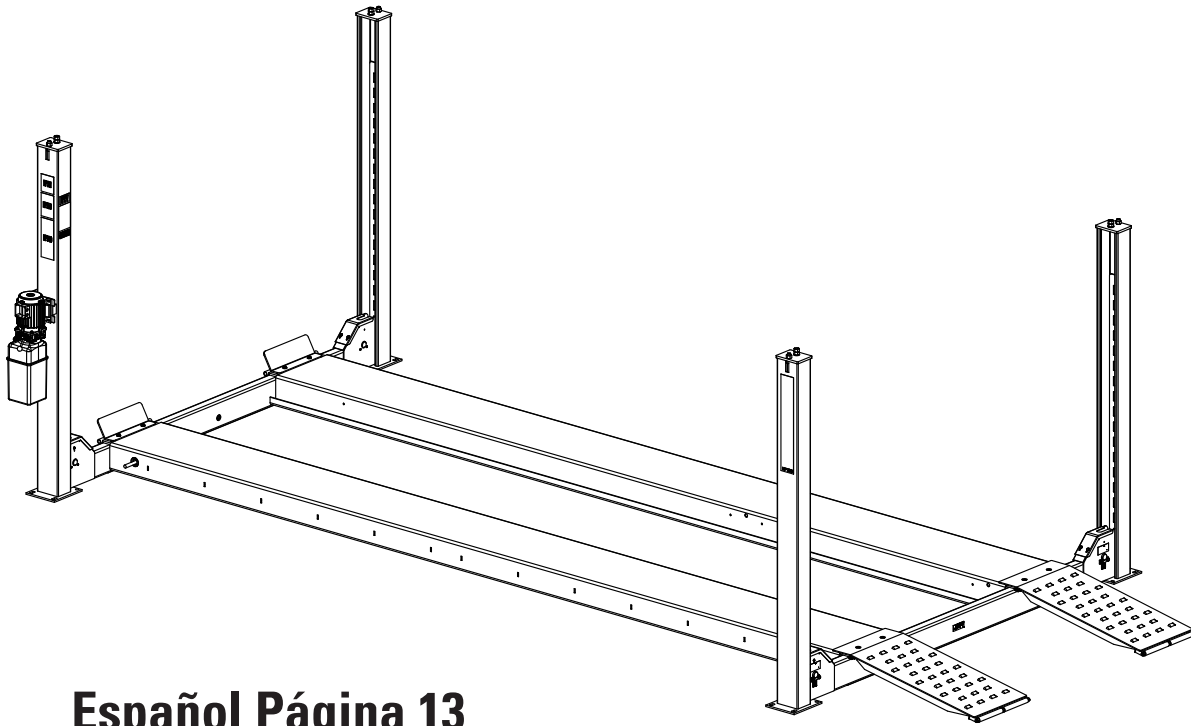




AR14/SM14

(100 Series) Four Post Surface Mounted Lift
Capacity 14,000 lbs. (6,350 kg.) (7,000 lbs. (3,175 kg.) per axle)



Español Página 13
Français Page 25

**P
A
R
T
S

B
R
E
A
K
D
O
W
N**

IMPORTANT: When ordering parts or requesting service always give exact model and power unit serial number. Model number is shown on nameplate attached to air lock release valve. Power unit serial number is located on side of power unit.

OWNERS RECORD
Complete information
at right and keep in
a safe place.

Date Installed _____

Installed in Bay # _____

Power Unit Serial # _____

Power Unit Model # _____

Lift Serial # _____

Lift Model # _____

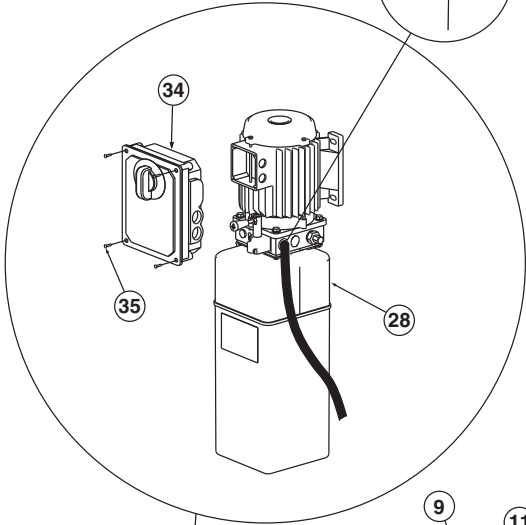
NOTE: For replacement parts -See your nearest Rotary Parts Distributor.

PB 2-3-3-16

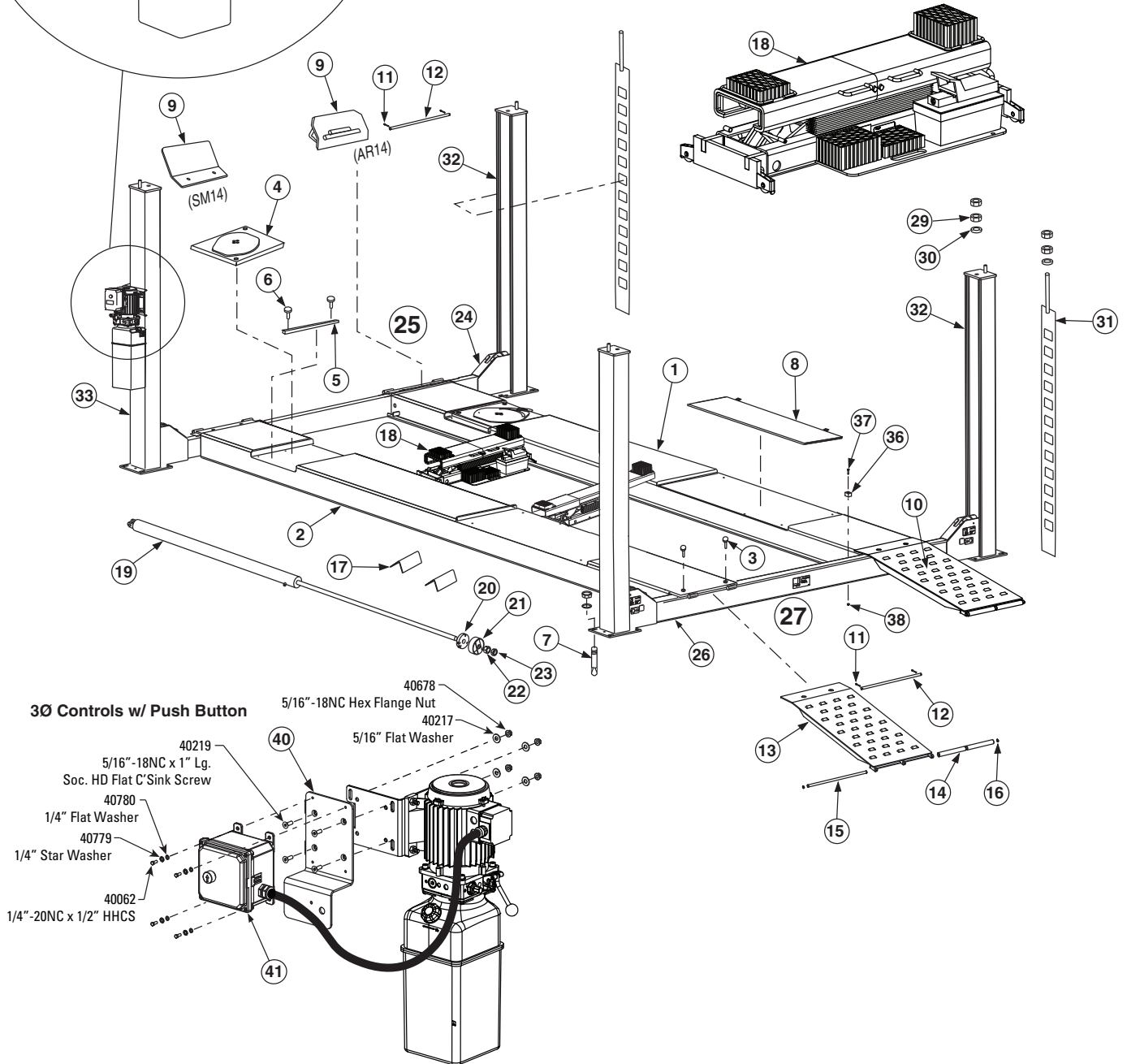
Rev. I 12/13/2022



SW-002 (Used on some models between Power Unit and Hose.)

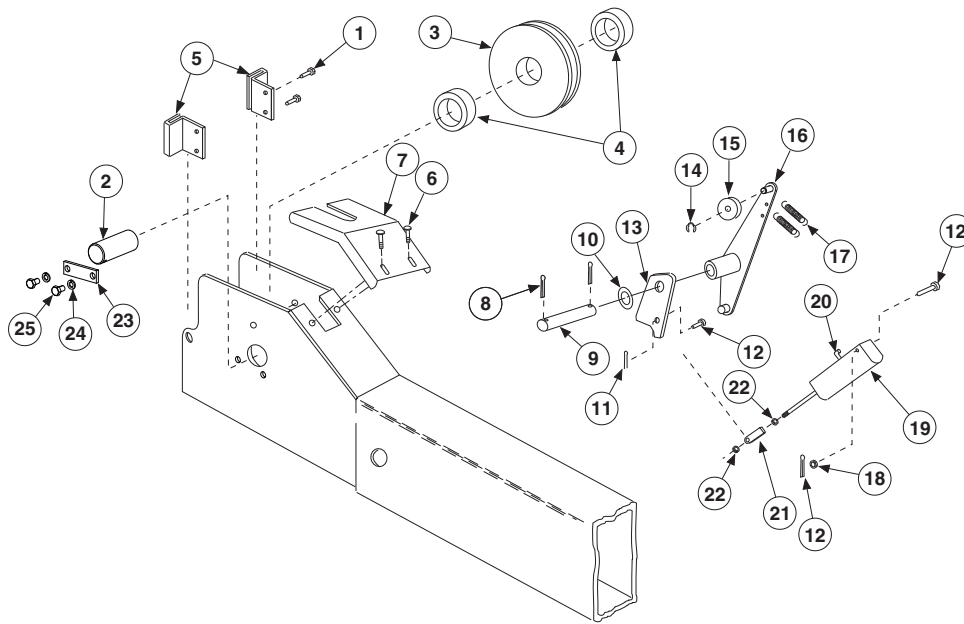


RUNWAY TABLE		
LIFT MODEL	Left Hand Runway Assembly <i>(Includes cylinder, cables and sheaves)</i>	Right Hand Runway Assembly/ Weldment
SM14S / 158" (401.3 cm) WB	S110429Y	S121228Y
SM14L / 182" (462.3 cm) WB	S110428Y	S121225Y
SM14EL / 215" (546.1 cm) WB	S110404Y	S121136Y
SM14S NB / 158" (401.3 cm) WB	S110450Y	S121228Y
SM14L NB / 182" (462.3 cm) WB	S110451Y	S121225Y
SM14EL NB / 215" (546.1 cm) WB	S110452Y	S121136Y
AR14S / 158" (401.3 cm) WB	S110447Y	S110515Y
AR14L / 182" (462.3 cm) WB	S110448Y	S110516Y
AR14EL / 215" (546.1 cm) WB	S110449Y	S110517Y
AR14S NB / 158" (401.3 cm) WB	S110453Y	S110515Y
AR14L NB / 182" (462.3 cm) WB	S110454Y	S110516Y
AR14EL NB / 215" (546.1 cm) WB	S110455Y	S110517Y

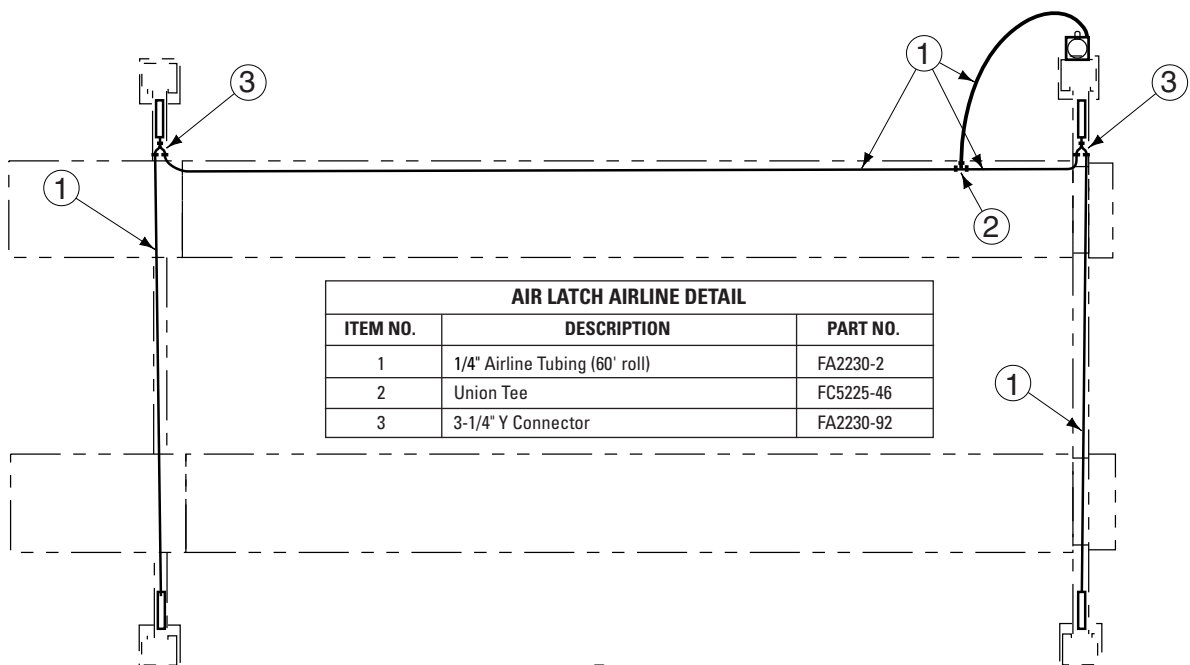


ITEM	DESCRIPTION	PART NO.	
1	R.H. Runway Assembly	Refer to table on opposite page	
2	L.H. Runway Assembly (Includes cylinder, cables and sheaves)	Refer to table on opposite page.	
		SM14	AR14
3	M12-30 Flg. Whiz-Lock HHCS	B18-12 x 30	B18-12 x 30
4	Radius Gauge	NA	S130205
5	Turntable Guide Arm	NA	FA5153-1Y
6	M10-20 Whiz-Lock HHCS	NA	B18-10 x 20
7	5/8" Anchor Bolt	FJ7386	FJ7386
8	Rear Slip Plate Kit	NA	S100154Y
9	Wheel Stop (SM)	FC342Y	S121248Y
*10	Ramp Chock Assembly (Standard)	S110405Y	S110405Y
	Ramp Chock Assembly (Extended) (Not Shown)	S110406Y	S110406Y
11	M5 x 40 Cotter Pin	B52-5 x 40	B52-5 x 40
12	Hinge Pin	FC5989Y	FC5989Y
13	Ramp Chock Weld (Standard)	S121148Y	S121148Y
	Ramp Chock Weld (Extended) (Not Shown)	S121300Y	S121300Y
14	Ramp Roller	FC5992Y	FC5992Y
15	Roller Pin	FC5991Y	FC5991Y
16	Snap Ring	B60-16	B60-16
17	Triangular Wheel Chock	H4P-R3100	H4P-R3100
18	Rolling Jack	RJ7000Y	RJ7000Y
	Swing Air Jack - Optional	SJ8000	SJ8000
19	Hydraulic Cylinder	S130156Y (S), S130243Y (L, EL)	S130156Y (S), S130243Y (L, EL)
20	Cable Pull Bar	S120706Y	S120706Y
21	Cable Retainer	S120068Y	S120068Y
22	1 3/8"-6NC Hex Nut	40771	40771
23	1 3/8"-6NC Hex Jam Nut	40773	40773
24	Front Yoke Weldment	S121125Y	S121125Y

25	Front Yoke Ass'y (Including Latches)	S110402Y	S110402Y
26	Rear Yoke Weldment	S121271Y	S121271Y
27	Rear Yoke Ass'y (Including Latches)	S110403Y	S110403Y
28	1Ø Power Unit	P3202 (S), P3641 (L, EL)	P3202 (S), P3641 (L, EL)
	3Ø Power Unit	P3346 (S), P3649 (L, EL)	P3346 (S), P3649 (L, EL)
29	M20 Hex Nut	B30-20	B30-20
30	M20 Flat Washer	B41-20	B41-20
31	Latch Bar	S121154Y	S121154Y
32	Column	S110445Y	S110445Y
33	Power Unit Column	S110446Y	S110446Y
34	Control Box	FA7366	FA7366
	Capacitor Box	FA7147-1	FA7147-1
	Capacitor Box Cover Plate	FA7366-1	FA7366-1
	Drum Switch	FA7364	FA7364
	Drum Switch Lever	FA7364-1	FA7364-1
35	M5 x 45 PHMS, Plated	41672	41672
36	Rubber Stop	FC7112Y	FC7112Y
37	M6 x 35 HHCS	B10-6x35	B10-6x35
38	M6 Nut	B30-6	B30-6
39	Ø6mm Flat Washer	B41-6	B41-6
40	3Ø Control Box Mounting Bracket - 4 Post	FA9154-1	FA9154-1
41	3Ø Control Box	FA9147	FA9147
	25 Amp Contactor	FA9147-2	FA9147-2
	Contactactor Coil, 208-240V	FA9147-6	FA9147-6
	Contactactor Coil, 575V	FA9147-12	FA9147-12



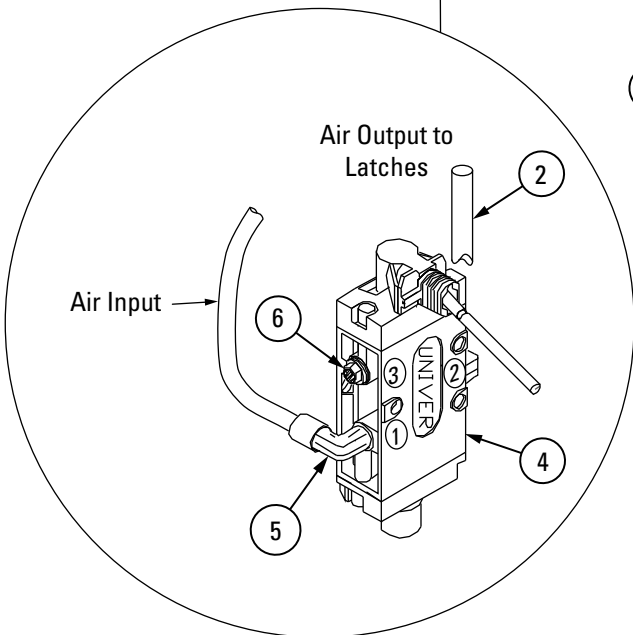
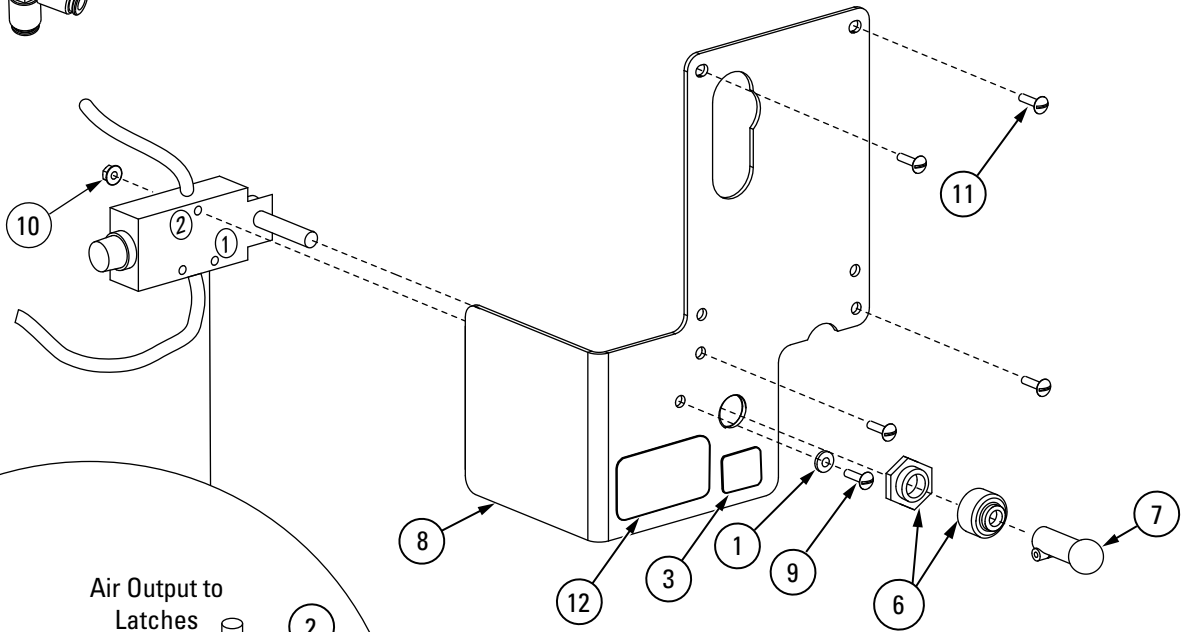
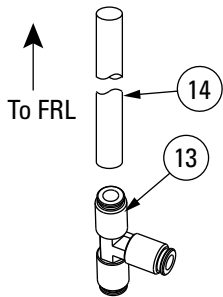
YOKE END DETAIL			YOKE END DETAIL		
ITEM	DESCRIPTION	PART NO.	ITEM	DESCRIPTION	PART NO.
1	M8 x 12 Cross Recessed Countersunk Screw	B24-8 x 12	14	M9 Snap Ring	B60-9
2	Sheave Pin	FC5981-1Y	15	Slack Cable Roller	FC553-21Y
3	Sheave	FC5977Y	16	Kicker	S121272Y
4	Yoke Sheave Spacer	S130286Y	17	Extension Spring	FC522-25Y
5	Slider	FC622Y	18	M6 Flat Washer	B41-6
6	Nylon Tree Rivet	460440	19	Air Cylinder	S130061
7	Guard	FC5985Y	20	Elbow	FC5224-39
8	Cotter Pin, 4 x 40	B52-4 x 40	21	Clevis	FC5993Y
9	Latch Shaft	FC5901-7Y	22	1/4" -28NF Hex Nut	40622
10	M20 Washer	B41-20	23	Lock Plate	H4P-3006
11	2 x 20 Hairpin Cotter Pin	B52-2 x 20	24	M10 Lock Washer	B40 x 10
12	Clevis Pin	S130287Y	25	M16 Hex Head Cap Screw	B10-10 x 16
13	Latch	FC5986Y			

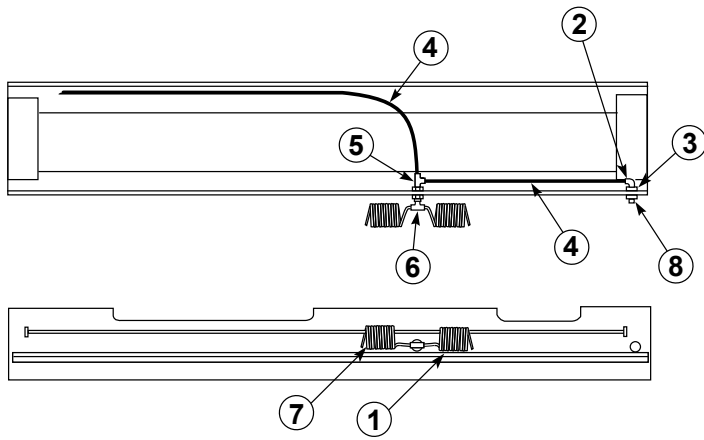


AIR LATCH AIRLINE DETAIL		
ITEM NO.	DESCRIPTION	PART NO.
1	1/4" Airline Tubing (60' roll)	FA2230-2
2	Union Tee	FC5225-46
3	3-1/4" Y Connector	FA2230-92

AIR LOCK RELEASE VALVE DETAIL

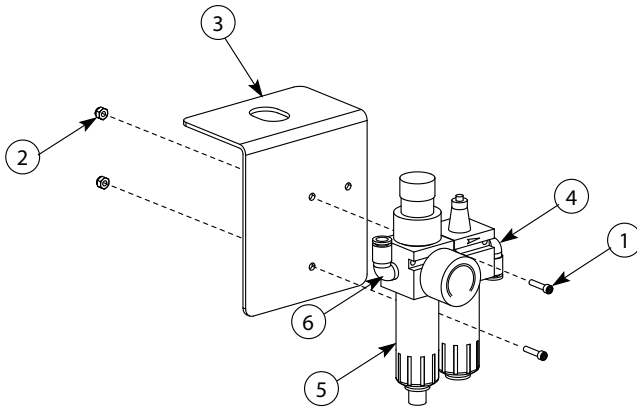
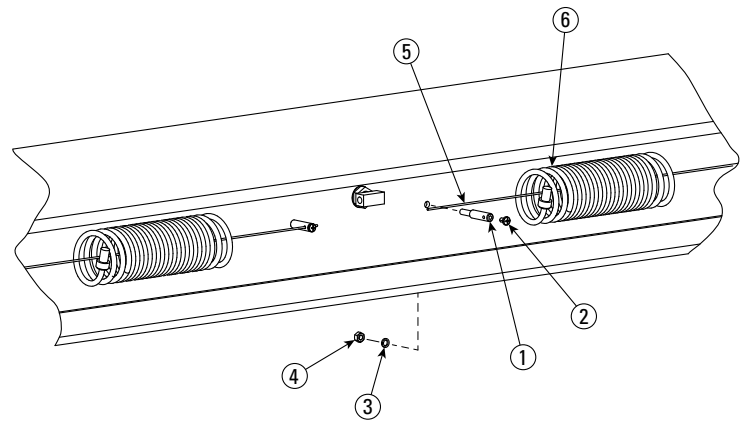
ITEM NO.	DESCRIPTION	PART NO.
1	Ø4mm Flat Washer	B41-4
2	1/4" Tubing	FC2230-2
3	Nameplate	NP280
4	Control Ass'y.	T140073
5	Swivel Elbow	T140074
6	Filter / Muffler	PSV-01
7	Air Lock Handle	T140119
8	Control Bracket 1Ø	S110274Y
	Control Bracket 3Ø	S110286Y
9	M4-30 PHMS	B23-4-30
10	M4 Nylon Locknut	B33-4
11	M5 x 15 PHMS 1Ø	40277
	M5 x 50 PHMS 3Ø	41696
12	Nameplate	NP864
13	Union Tee	FA2242-1
14	3/8" tubing (40ft roll)	FA2230-15



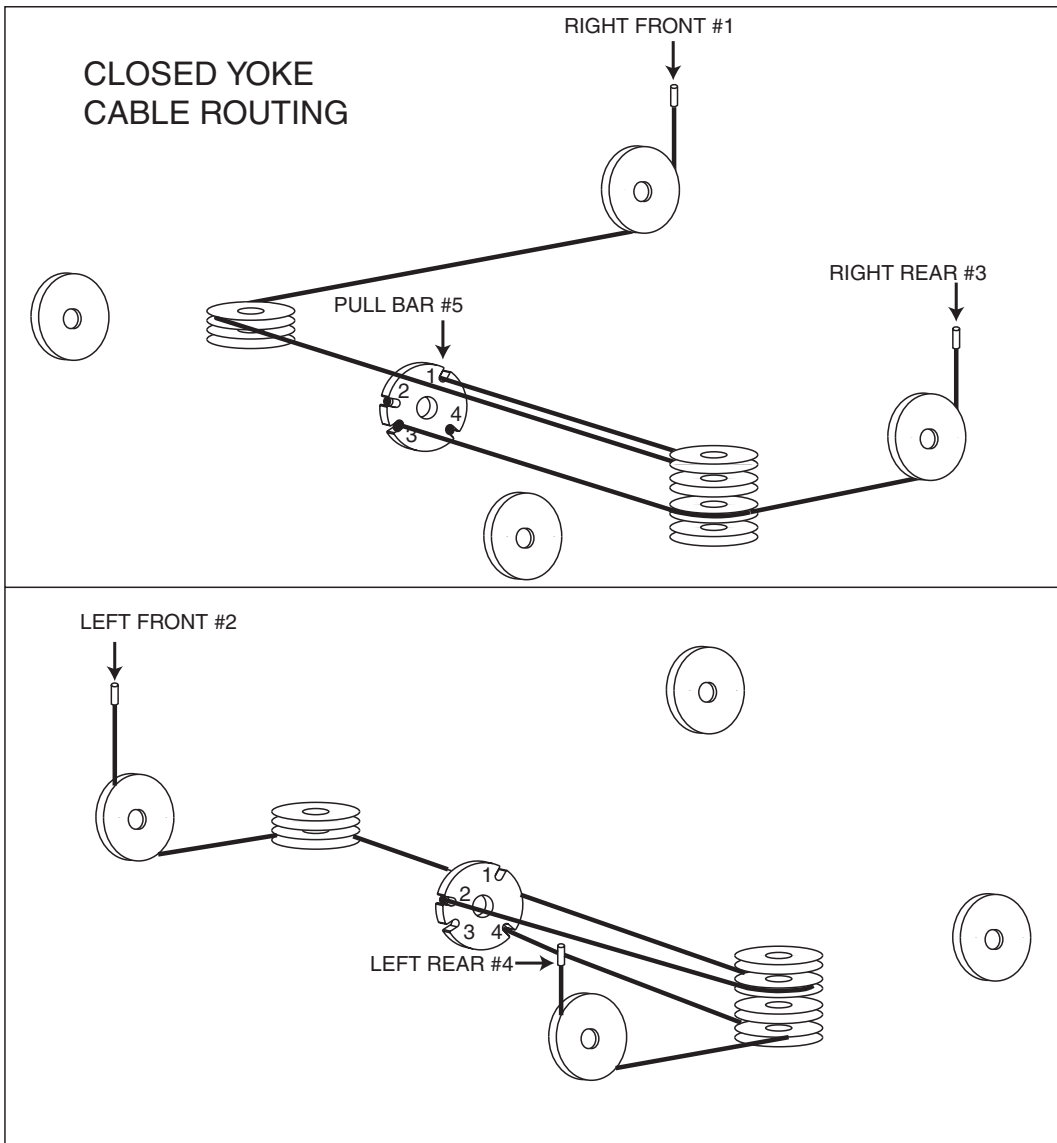


INTERNAL AIRLINE PARTS			
ITEM NO.	DESCRIPTION	PART NO.	PART NO.
		S MODEL	L, EL MODELS
1	Front Recoil Hose	FC147-14	FC147-14
2	Male Elbow	FC147-7	FC147-7
3	Female Bulkhead	FC147-1	FC147-1
4	3/8" Tubing (40ft roll)	FA2230-15	FA2230-15
5	Male Run Tee	FC147-3	FC147-3
6	Male Branch Tee	FC147-5	FC147-5
7	Rear Recoil Hose	FC147-14	S130160
8	1/4" Hex Plug	40639	40639

RETAINER CABLE DETAIL				
ITEM NO.	DESCRIPTION	PART NO.	PART NO.	PART NO.
		S MODEL	L MODEL	EL MODEL
1	Guide Pin	H4P-3007	H4P-3007	H4P-3007
2	M6 X 10mm Cross Recess Pan Head Screw	B23-6-10	B23-6-10	B23-6-10
3	Ø8mm Star Washer	B49-8	B49-8	B49-8
4	M8 Hex Nut	B30-8	B30-8	B30-8
5	Front Airline Retainer Cable	S110464Y	S110464Y	S110464Y
	Rear Airline Retainer Cable	S110464Y	S110463Y	S110462Y
6	Recoil Hose	-	-	-

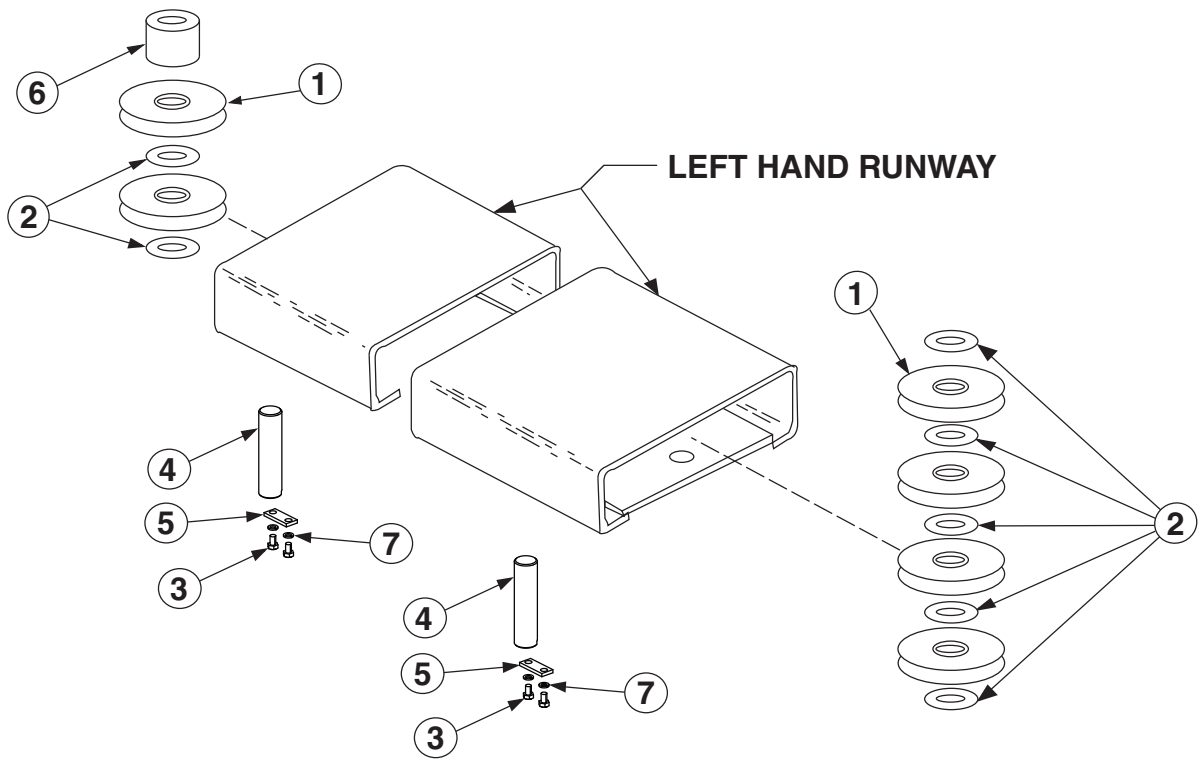


FRL DETAIL			
ITEM NO.	DESCRIPTION	SM14	AR14
1	M4-12 Hex SHCS	B23-4-12	B23-4-12
2	M4 Nylon Lock Nut	B33-4	B33-4
3	Adapter Bracket	S120674Y	S120674Y
4	Elbow	FC5185-96	FC147-7
5	Filter/Regulator/Lubricator	S130080	S130080
6	Elbow	FC147-7	FC147-7

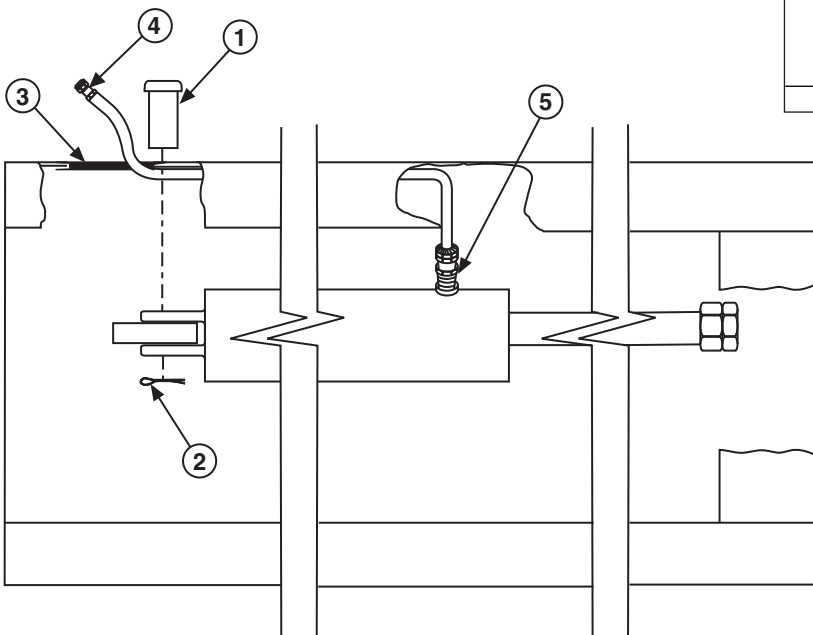


CABLES		PART NO.					
ITEM NO.	DESCRIPTION	SM/AR14			SM/AR14NB		
		158"	182"	215"	158"	182"	215"
1	Right Front Cable	S130255Y	S130257Y	S130261Y	S130318Y	S130320Y	S130324Y
2	Left Front Cable	S130254Y	S130256Y	S130260Y	S130317Y	S130319Y	S130323Y
3	Right Rear Cable	S130259Y	S130259Y	S130259Y	S130322Y	S130322Y	S130322Y
4	Left Rear Cable	S130258Y	S130258Y	S130258Y	S130321Y	S130321Y	S130321Y
5	Pull Bar	S120706Y	S120706Y	S120706Y	S120706Y	S120706Y	S120706Y

* CABLE RETAINER NOT SHOWN TO CLARIFY ILLUSTRATION OF CABLE ROUTING

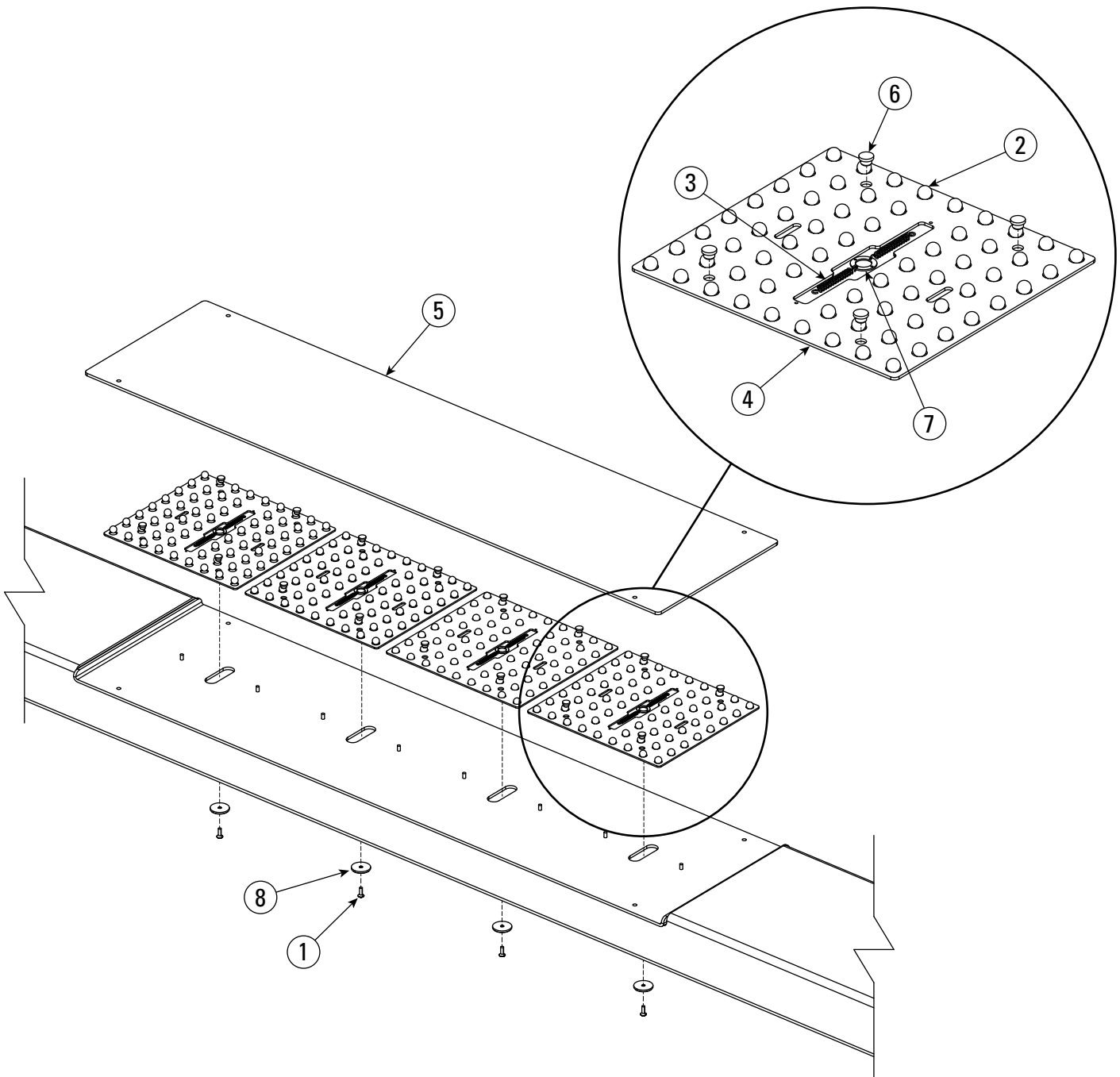


SHEAVE DETAIL		
ITEM NO.	DESCRIPTION	PART NO.
1	Sheave	FC5977Y
2	Plastic Bearing	S130246Y
3	M10 x 16 Hex Head Cap Screw	B10-10 x 16
4	Sheave Pin	FC5983Y
5	Lock Plate	H4P-1020
6	CF Runway Sheave Spacer	S130288Y
7	Washer	B40-10



HYDRAULIC HOSE DETAIL		
ITEM NO.	DESCRIPTION	ITEM NO.
1	Clevis Pin	FC5346-1Y
2	M5 x 60 Cotter Pin	B52-5 x 60
3	Grommet	S130315Y
4	Hose	
	"S" Model	CR14-9801-4
	"L" Model	CR14-9801-3
	"EL" Model	CR14-9801-2
5	Adapter	FJ7352-3

4 WS SLIP PLATE PARTS		
ITEM NO.	DESCRIPTION	PART NO.
1	M8 x 16 Flat Head Screw	B26-8x16
2	Slip Plate Ball	FC5190-7
3	Spring	NH4D-1011
4	Ball Retainer	S121230Y
5	Rear Slip Plate Weld	S121232Y
6	Nylon Pin	FC625Y
7	Spring Tension Ring	SM60-1522
8	Rear Slip Plate Retainer Plate	SM65-2003



NOTES

Rotary World Headquarters

2700 Lanier Drive
Madison, IN 47250, USA
www.rotarylif.com

North America Contact Information

Tech. Support:
p 800.445.5438
f 800.578.5438
e userlink@rotarylif.com
Sales:
p 800.640.5438
f 800.578.5438
e userlink@rotarylif.com

World Wide Contact Information

World Headquarters/USA: 1.812.273.1622
Canada: 1.905.812.9920
European Headquarters/Germany: +49.771.9233.0
United Kingdom: +44.178.747.7711
Australasia: +60.3.7660.0285
Latin America / Caribbean: +54.3488.431.608
Middle East / Northern Africa: +49.771.9233.0

© Vehicle Service GroupSM

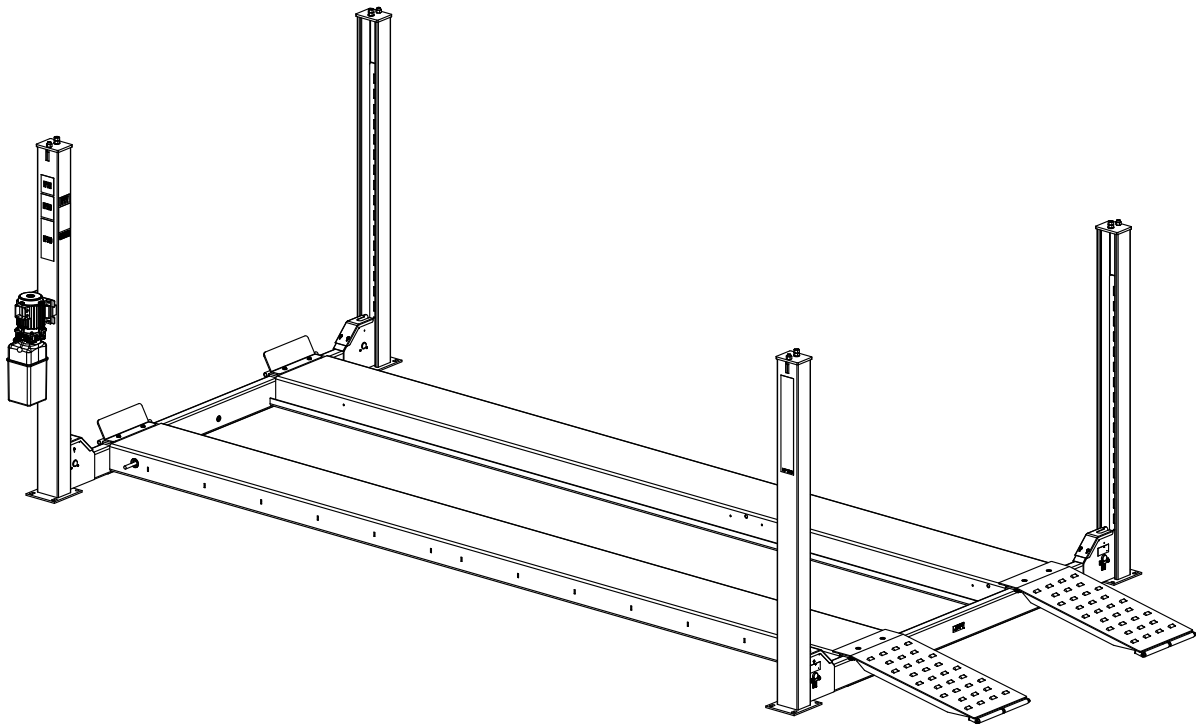
Printed in U.S.A., All Rights Reserved. Unless otherwise indicated, ROTARY, and all other trademarks are property of Dover Corporation and its affiliates.





AR14/SM14

Elevador de montaje superficial de cuatro columnas (Serie 100)
Capacidad 14.000 lbs. (6,350 kg.) (7.000 (3,175 kg.) libras por eje)



DES
GLO
SE
DE
PAR
TES

IMPORTANTE: Al solicitar piezas o servicios indique siempre el modelo exacto y el número de serie de la unidad de alimentación. El número de modelo se muestra en la placa fijada a la válvula de liberación de los cierres neumáticos. El número de serie de la unidad de alimentación se encuentra a un lado de ésta.

REGISTRO DEL PROPIETARIO
Completar la información a la derecha y mantenerla en un lugar seguro.

Fecha de Instalación _____

Instalado en la Bahía No. _____

No. de Serie de la Unidad de Energía _____

No. de Modelo de la Unidad de Energía _____

No. de Serie del Elevador _____

No. de Modelo del Elevador _____

NOTA: Para piezas de repuesto: Vea a su Distribuidor de Piezas Rotary más cercano.

PB 2-3-3-16

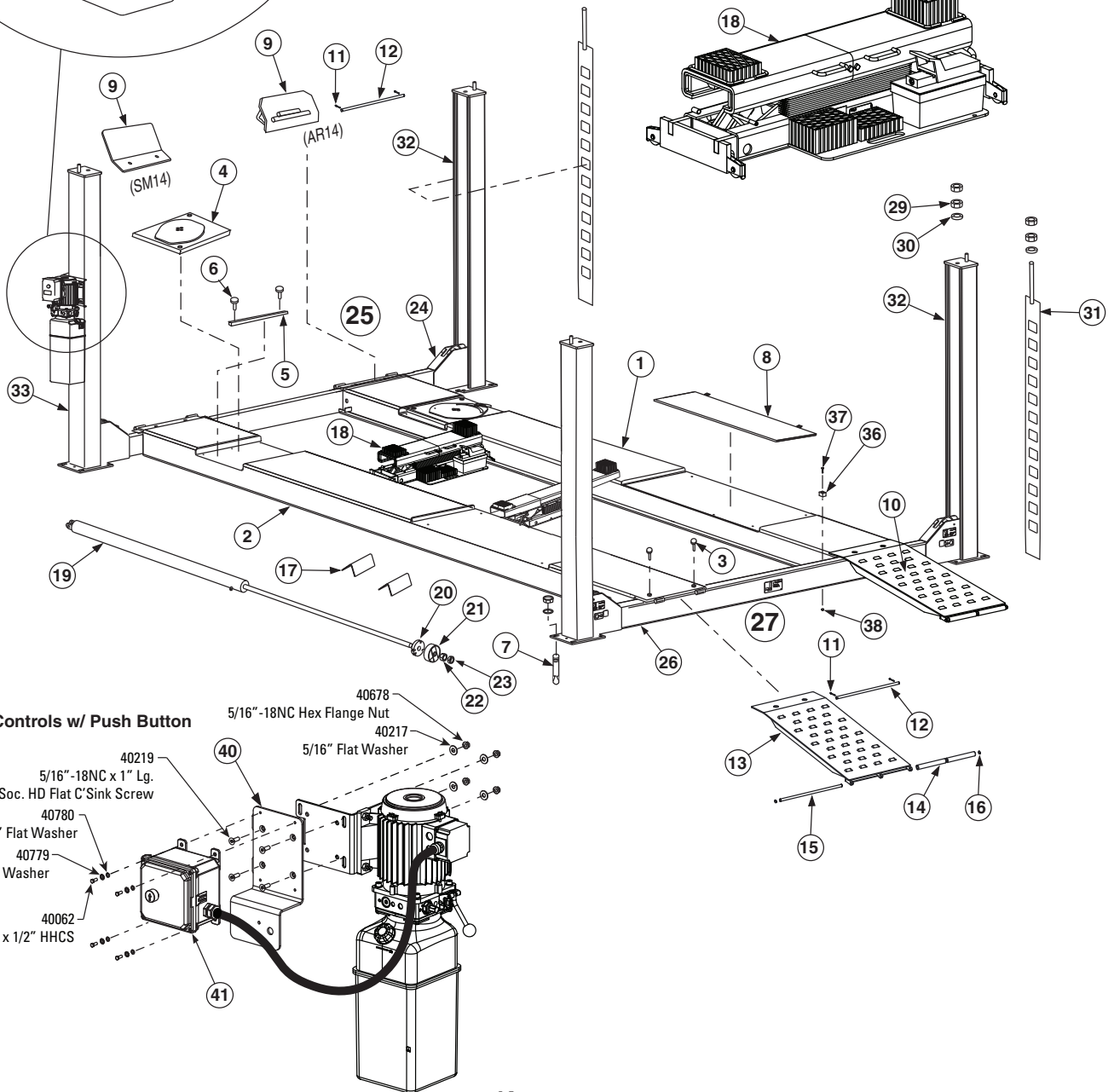
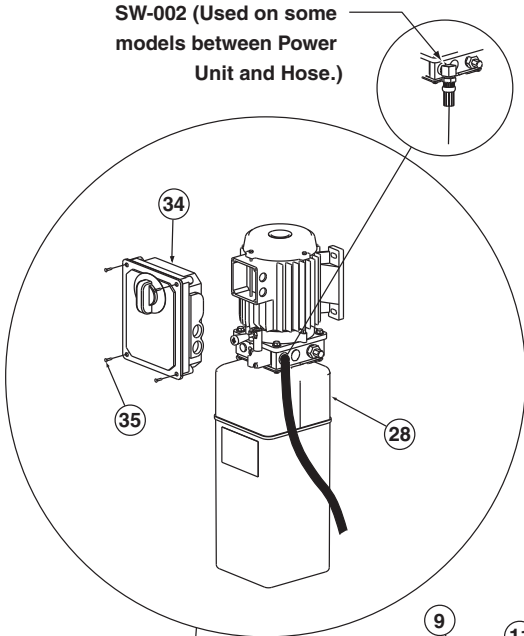
Rev. I 12/13/2022



TABLA DE RECORRIDO

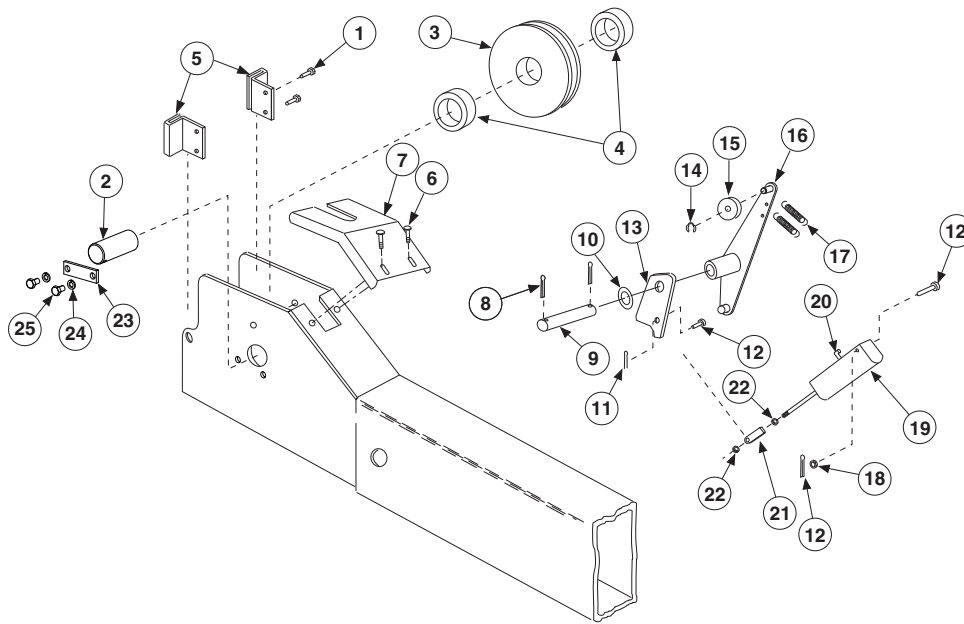
MODELO DE ELEVADOR	Mano izquierda Ensamblaje del Carril (Incluye cilindro, cables y poleas)	Mano derecha Ensamblaje del Carril Soldadura
SM14S / 158" (401.3 cm) WB	S110429Y	S121228Y
SM14L / 182" (462.3 cm) WB	S110428Y	S121225Y
SM14EL / 215" (546.1 cm) WB	S110404Y	S121136Y
SM14S NB / 158" (401.3 cm) WB	S110450Y	S121228Y
SM14L NB / 182" (462.3 cm) WB	S110451Y	S121225Y
SM14EL NB / 215" (546.1 cm) WB	S110452Y	S121136Y
AR14S / 158" (401.3 cm) WB	S110447Y	S110515Y
AR14L / 182" (462.3 cm) WB	S110448Y	S110516Y
AR14EL / 215" (546.1 cm) WB	S110449Y	S110517Y
AR14S NB / 158" (401.3 cm) WB	S110453Y	S110515Y
AR14L NB / 182" (462.3 cm) WB	S110454Y	S110516Y
AR14EL NB / 215" (546.1 cm) WB	S110455Y	S110517Y

SW-002 (Used on some models between Power Unit and Hose.)



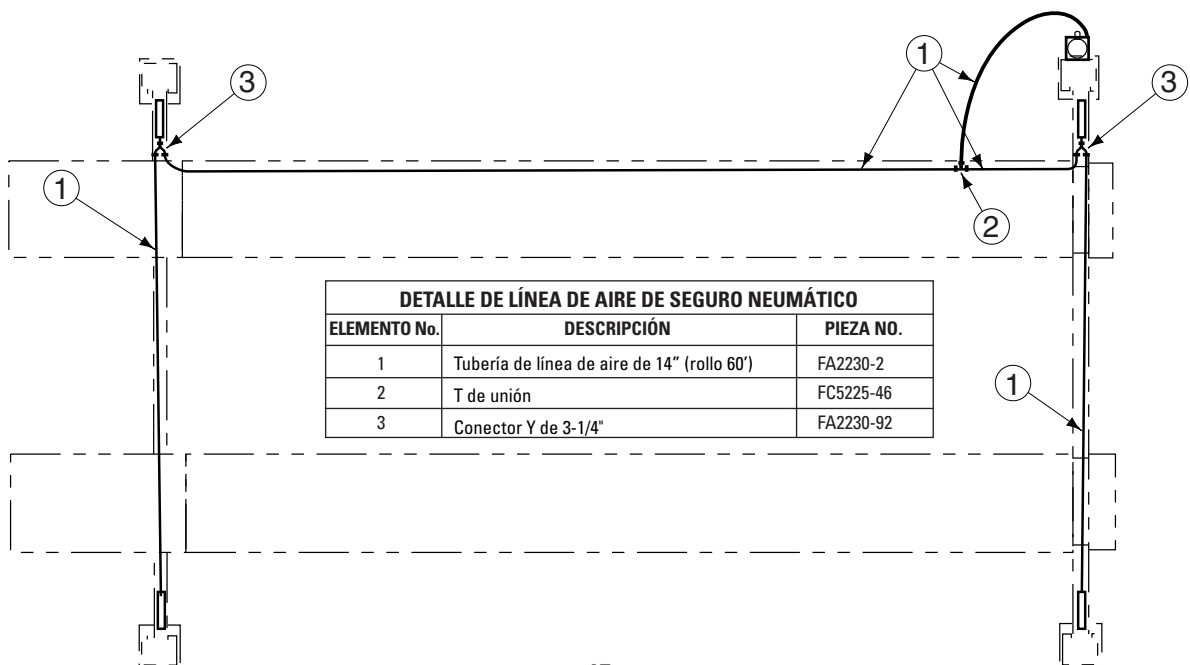
ARTÍCULO	DESCRIPCIÓN	PIEZA NO.	
1	Ensamblaje de Carril Derecho	Consulte la tabla en la página opuesta	
2	Ensamblaje de Carril Izquierdo (incluye cilindro, cables y poleas)	Consulte la tabla en la página opuesta.	
		SM14	AR14
3	Brida M12-30 Whiz-Lock HHCS	B18-12 x 30	B18-12 x 30
4	Medidor de Radio	NA	S130205
5	Brazo de Guía de la Placa Giratoria	NA	FA5153-1Y
6	M10-20 Whiz-Lock HHCS	NA	B18-10 x 20
7	Perno de Anclaje de 5/8"	FJ7386	FJ7386
8	Equipo de Placa de Deslizamiento Posterior	NA	S100154Y
9	Freno de la Rueda (SM)	FC342Y	S121248Y
*10	Ensamblaje de la Cuña de Rampa (Estándar)	S110405Y	S110405Y
	Ensamblaje de la Cuña de Rampa (No mostrado)	S110406Y	S110406Y
11	Chaveta de M5 x 40	B52-5 x 40	B52-5 x 40
12	Pasador de Bisagra	FC5989Y	FC5989Y
13	Soldadura de Cuña de Rampa (Estándar)	S121148Y	S121148Y
	Soldadura de la Cuña de Rampa (Extendida) (No mostrada)	S121300Y	S121300Y
14	Rodillo de la rampa	FC5992Y	FC5992Y
15	Pasador del rodillo	FC5991Y	FC5991Y
16	Anillo de Cierre	B60-16	B60-16
17	Cuña de rueda triangular	H4P-R3100	H4P-R3100
18	Gato de balanceo	RJ7000Y	RJ7000Y
	Gato Neumático Oscilatorio – Opcional	SJ8000	SJ8000
19	Cilindro Hidráulico	S130156Y (S), S130243Y (L, EL)	S130156Y (S), S130243Y (L, EL)
20	Barra de Cableado	S120706Y	S120706Y
21	Sujetador de Cable	S120068Y	S120068Y
22	1 Tuerca Hexagonal 3/8"-6NC	40771	40771
23	1 Tuerca de Bloqueo Hexagonal 3/8"-6NC	40773	40773
24	Soldadura de Horquilla Delantera	S121125Y	S121125Y

25	Montaje de Horquilla Delantera (Incluyendo Seguros)	S110402Y	S110402Y
26	Soldadura de Horquilla Trasera	S121271Y	S121271Y
27	Ensamblaje de Horquilla Trasera (Incluyendo Seguros)	S110403Y	S110403Y
28	1Ø Unidad de Energía	P3202 (S), P3641 (L, EL)	P3202 (S), P3641 (L, EL)
	3Ø Unidad de Energía	P3346 (S), P3649 (L, EL)	P3346 (S), P3649 (L, EL)
29	Tuerca hexagonal M20	B30-20	B30-20
30	Arandela plana M20	B41-20	B41-20
31	Barra de seguridad	S121154Y	S121154Y
32	Columna	S110445Y	S110445Y
33	Columna de la unidad de energía	S110446Y	S110446Y
34	Caja de control	FA7366	FA7366
	Caja del Condensador	FA7147-1	FA7147-1
	Placa de Cubierta de la Caja del Condensador	FA7366-1	FA7366-1
	Interruptor de Tambor	FA7364	FA7364
	Palanca del Interruptor de Tambor	FA7364-1	FA7364-1
35	PHMS M5 x 45, recubierto	41672	41672
36	Freno de Goma	FC7112Y	FC7112Y
37	M6 x 35 HHCS	B10-6x35	B10-6x35
38	M6 Tuerca	B30-6	B30-6
39	Ø6mm Plana Lavadora	B41-6	B41-6
40	3Ø Control Box Mounting Bracket - 4 Post	FA9154-4	FA9154-1
41	3Ø Control Box	FA9147	FA9147
	25 Amp Contactor	FA9147-2	FA9147-2
	Contactador Coil, 208-240V	FA9147-6	FA9147-6
	Contactador Coil, 575V	FA9147-12	FA9147-12



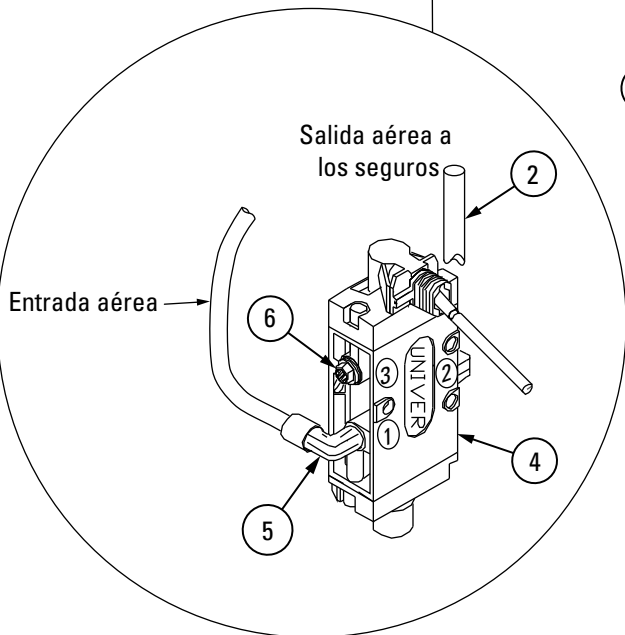
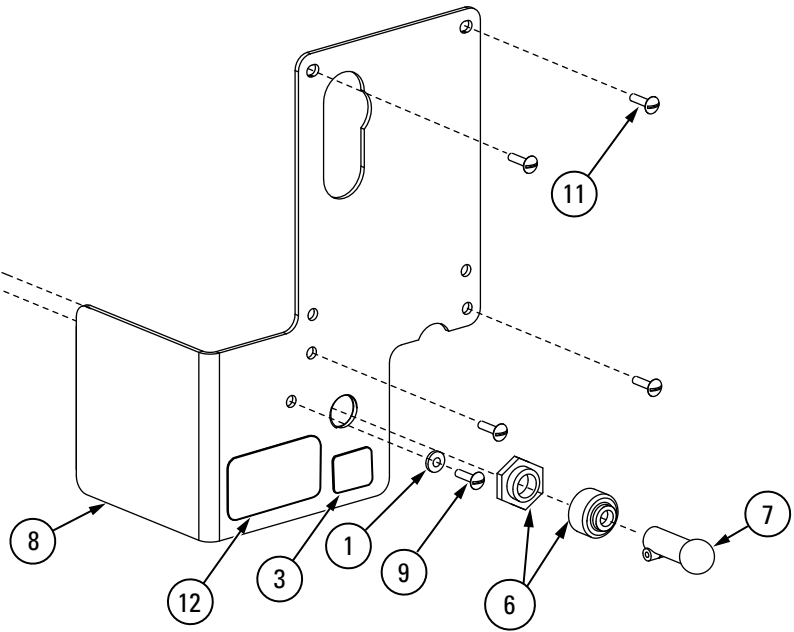
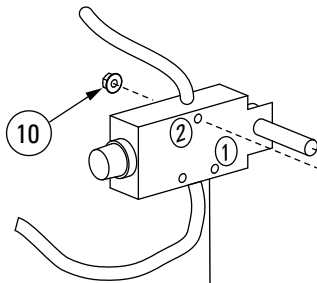
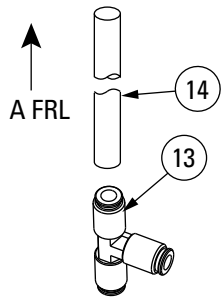
DETALLE DEL EXTREMO DEL YUGO		
ARTÍCULO	DESCRIPCIÓN	PIEZA NO.
1	Tornillo encastrado con receso y cruzado M8 x 12	B24-8 x 12
2	Pasador de Polea	FC5981-1Y
3	Polea	FC5977Y
4	Separador de polea de yugo	S130286Y
5	Deslizador	FC622Y
6	Remache de Nylon	460440
7	Protección	FC5985Y
8	Chaveta, 4 x 40	B52-4 x 40
9	Eje del cierre	FC5901-7Y
10	Arandela M20	B41-20
11	Pasador de bifurcación 2 x 20	B52-2 x 20
12	Pasador de la abrazadera	S130287Y
13	Cierre	FC5986Y

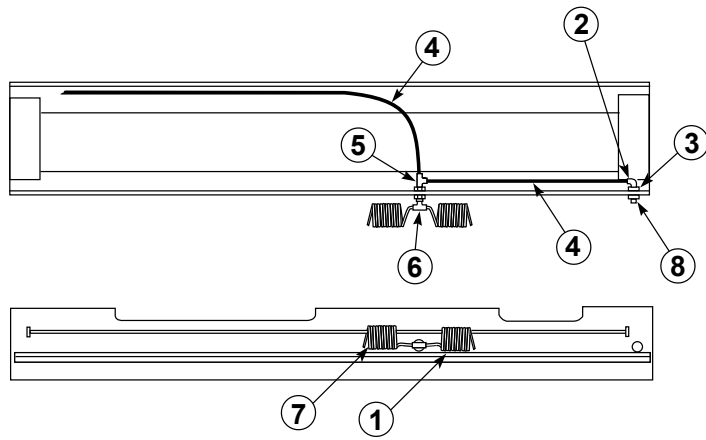
DETALLE DEL EXTREMO DEL YUGO		
ARTÍCULO	DESCRIPCIÓN	PIEZA NO.
14	Anillo de cierre M9	B60-9
15	Rodillo tensor de cable	FC553-21Y
16	Impulsor	S121272Y
17	Resorte de Extensión	FC522-25Y
18	Arandela plana M6	B41-6
19	Cilindro neumático	S130061
20	Codo	FC5224-39
21	Abrazadera	FC5993Y
22	Tuerca Hexagonal 1/4" -28NF	40622
23	Placa de Bloqueo	H4P-3006
24	Arandela de cierre M10	B40 x 10
25	Tornillo de cabeza hexagonal M16	B10-10 x 16



DETALLE DE LA VÁLVULA DE LIBERACIÓN DE CIERRE NEUMÁTICO

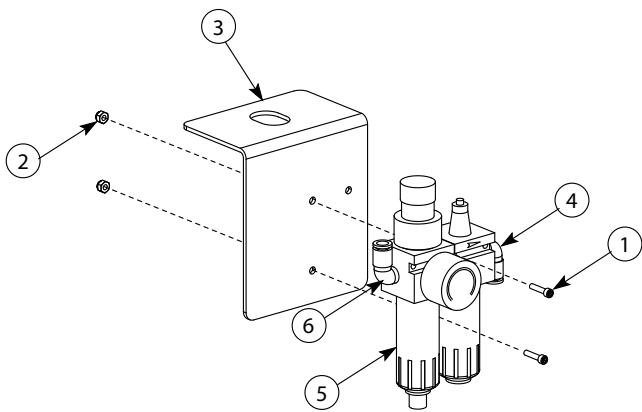
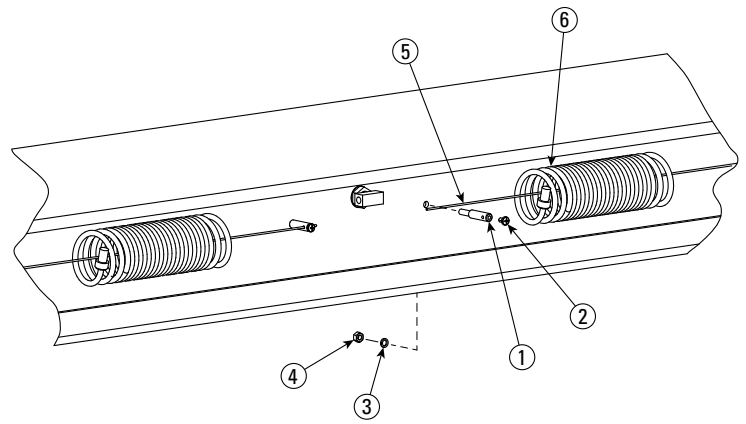
ELEMENTO No.	DESCRIPCIÓN	PIEZA NO.
1	Arandela plana de Ø4mm	B41-4
2	Tubo de 1/4"	FC2230-2
3	Placa de Identificación	NP280
4	Ensamblaje del Control	T140073
5	Codo Giratorio	T140074
6	Filtro/Silenciador	PSV-01
7	Manija de bloqueo de aire	T140119
8	Abrazadera de control 1Ø	S110274Y
	Abrazadera de control 3Ø	S110286Y
9	M4-30 PHMS	B23-4-30
10	Contratuercas de nylon M4	B33-4
11	M5 x 15 PHMS 1Ø	40277
	M5 x 50 PHMS 3Ø	41696
12	Placa de Identificación	NP864
13	T de unión	FA2242-1
14	Tubo de 3/8" (rollo de 40')	FA2230-15



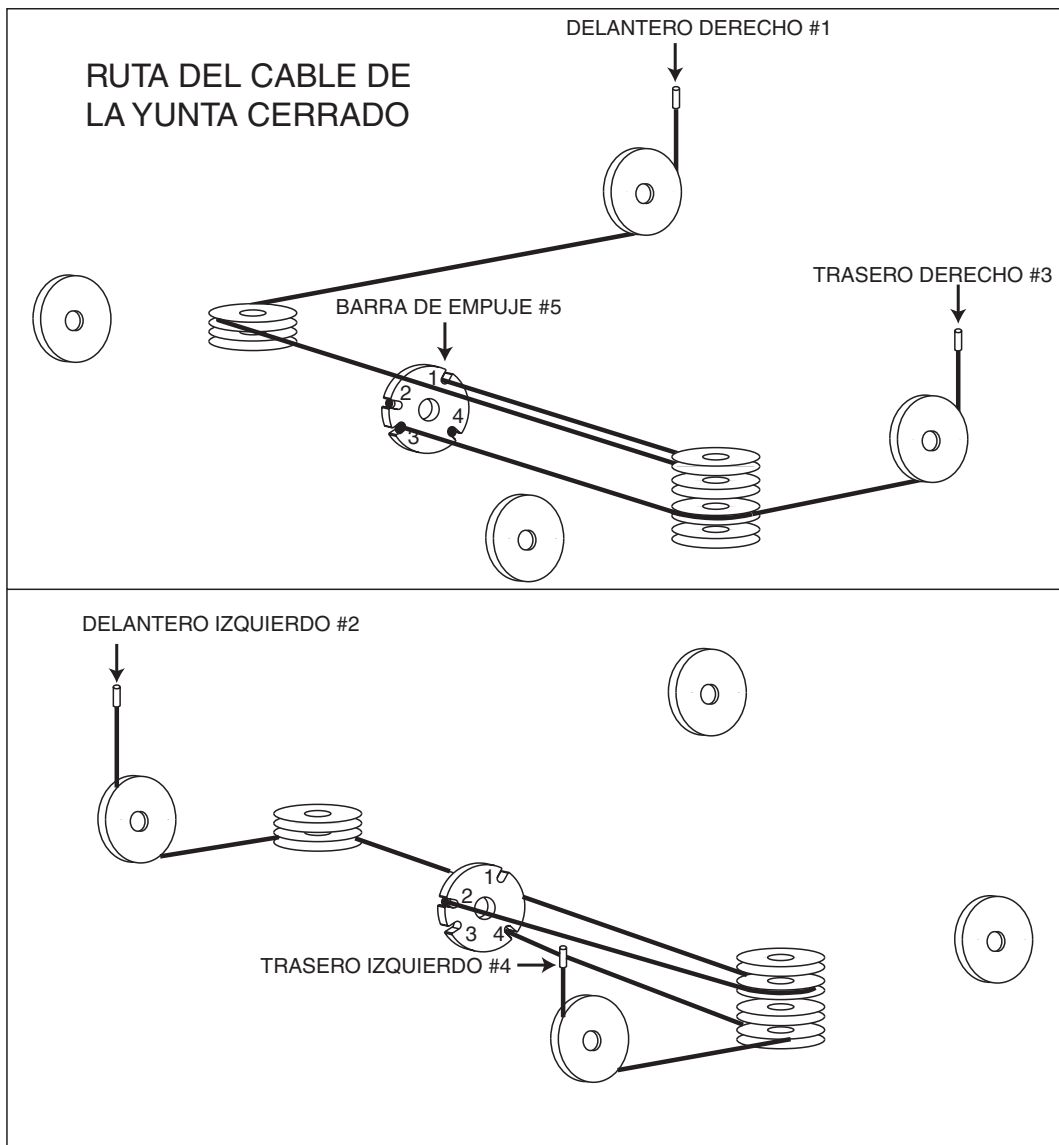


PARTES INTERNAS DE LÍNEA DE AIRE			
ELEMENTO No.	DESCRIPCIÓN	PIEZA NO.	PIEZA NO.
		MODELO S	MODELOS L, EL
1	Manguera Delantera de Retroceso	FC147-14	FC147-14
2	Codo Macho	FC147-7	FC147-7
3	Mampara Hembra	FC147-1	FC147-1
4	Tubo de 3/8" (rollo 40')	FA2230-15	FA2230-15
5	T de Funcionamiento Macho	FC147-3	FC147-3
6	T de Rama Macho	FC147-5	FC147-5
7	Manguera Trasera de Retroceso	FC147-14	S130160
8	Tapón con agujero de 1/4"	40639	40639

DETALLE DEL CABLE DE LA RETENEDORA				
ELEMENTO No.	DESCRIPCIÓN	PIEZA NO.	PIEZA NO.	PIEZA NO.
		MODELO S	MODELO L	MODELO EL
1	Perno guía	H4P-3007	H4P-3007	H4P-3007
2	Tornillo de cabeza con hendidura y receso cruzado M6 X 10mm	B23-6-10	B23-6-10	B23-6-10
3	Arandela de estrella de Ø8mm	B49-8	B49-8	B49-8
4	Tuerca hexagonal M8	B30-8	B30-8	B30-8
5	Cable de la retenedora de la línea aérea delantera, Cable de la retenedora de la línea aérea trasera	S110464Y	S110464Y	S110464Y
		S110464Y	S110463Y	S110462Y
6	Manguera de Retracción	-	-	-

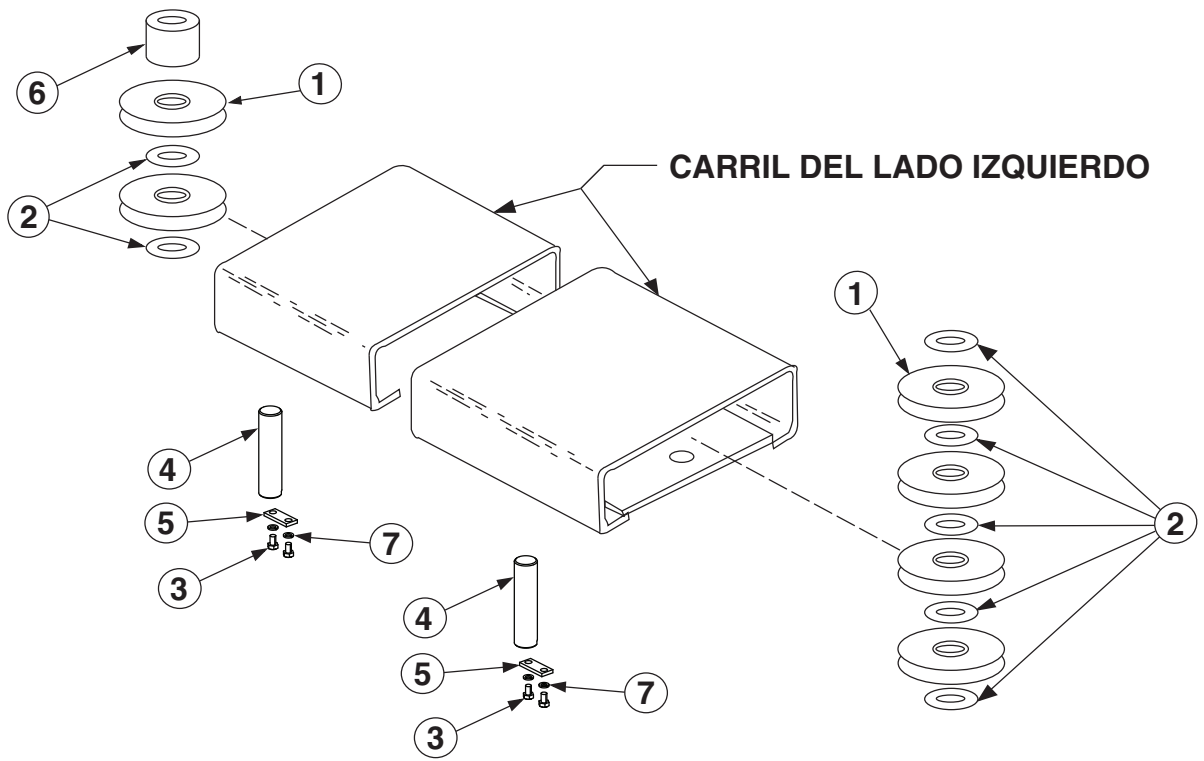


DETALLE FRL			
ELEMENTO No.	DESCRIPCIÓN	SM14	AR14
1	SHCS Hexagonal M4-12	B23-4-12	B23-4-12
2	Tuerca de seguridad de nylon M4	B33-4	B33-4
3	Soporte del Adaptador	S120674Y	S120674Y
4	Codo	FC5185-96	FC147-7
5	Filtro/Regulador/Lubricador	S130080	S130080
6	Codo	FC147-7	FC147-7

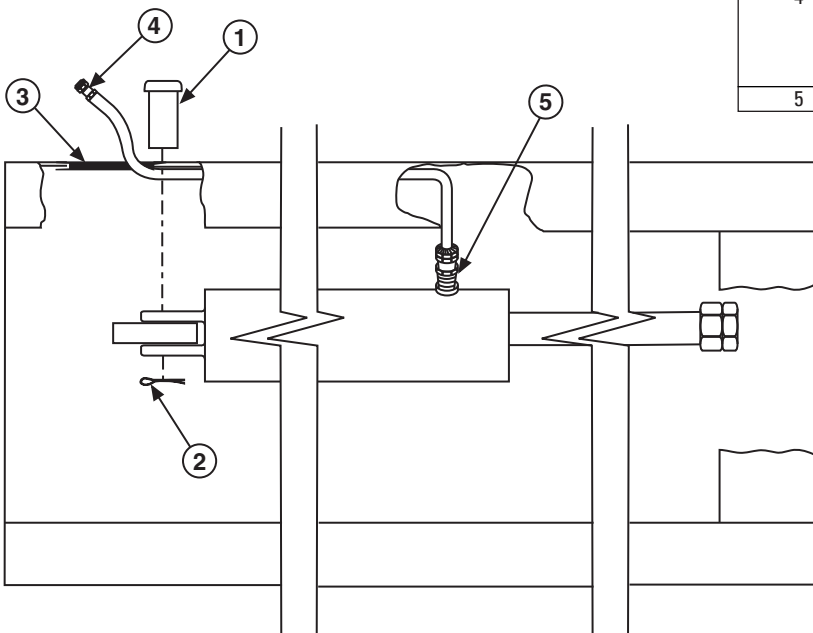


CABLES		PIEZA NO.					
ARTÍCULO NO.	DESCRIPCIÓN	SM/AR14			SM/AR14NB		
		158"	182"	215"	158"	182"	215"
1	Cable delantero derecho	S130255Y	S130257Y	S130261Y	S130318Y	S130320Y	S130324Y
2	Cable delantero izquierdo	S130254Y	S130256Y	S130260Y	S130317Y	S130319Y	S130323Y
3	Cable Trasero Derecho	S130259Y	S130259Y	S130259Y	S130322Y	S130322Y	S130322Y
4	Cable Trasero Izquierdo	S130258Y	S130258Y	S130258Y	S130321Y	S130321Y	S130321Y
5	Barra de tracción	S120706Y	S120706Y	S120706Y	S120706Y	S120706Y	S120706Y

* SUJETADOR DEL CABLE NO MOSTRADO PARA ACLARAR LA ILUSTRACIÓN DE CÓMO DIRECCIONAR EL CABLE



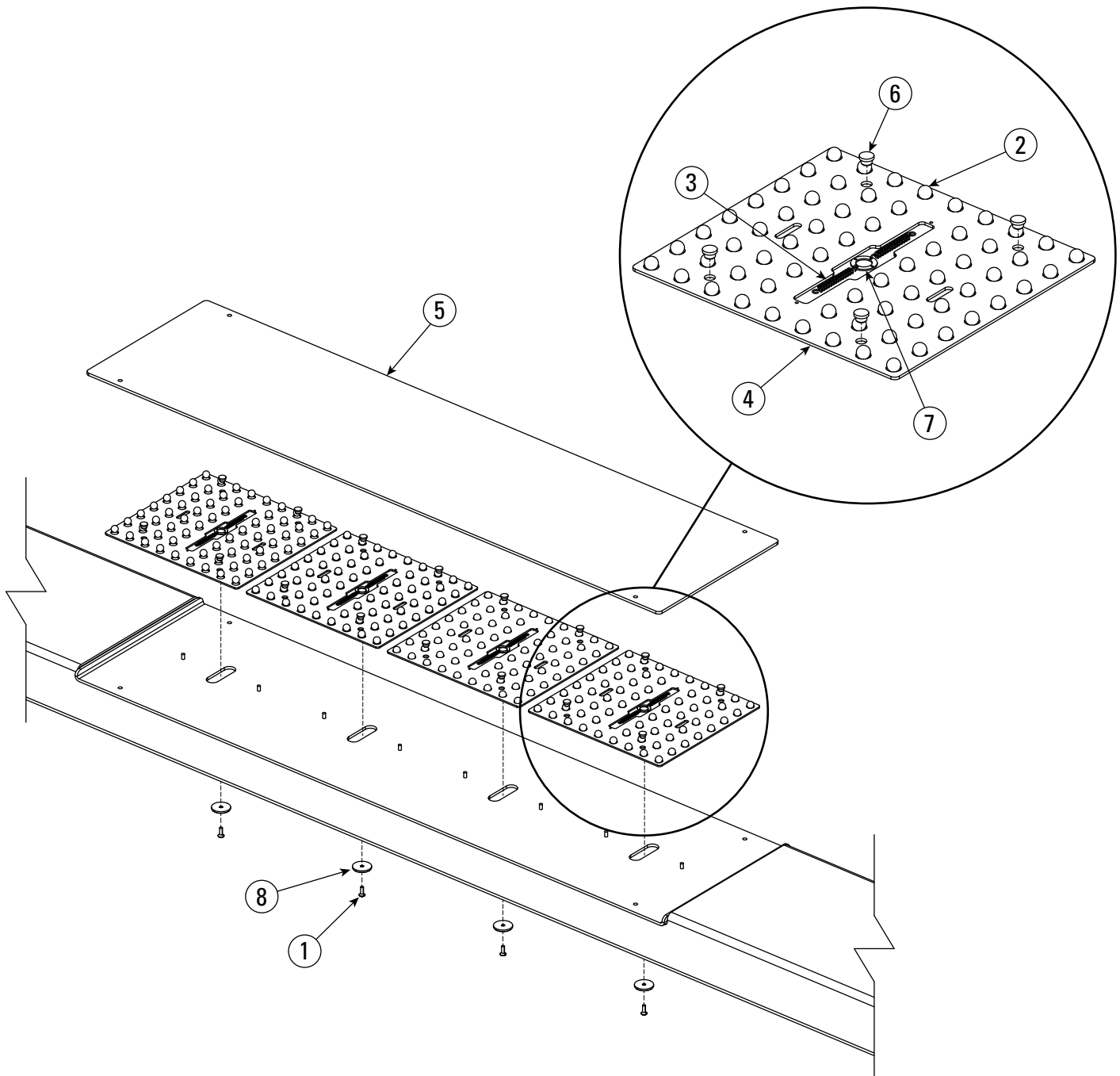
DETALLE DE POLEA		
ELEMENTO No.	DESCRIPCIÓN	PIEZA NO.
1	Polea	FC5977Y
2	Rodamiento Plástico	S130246Y
3	Tornillo con cabeza hexagonal M10 x 16	B10-10 x 16
4	Pasador de Polea	FC5983Y
5	Placa de Bloqueo	H4P-1020
6	Separador de polea de carril CF	S130288Y
7	Arandela	B40-10



DETALLE DE MANGUERA HIDRÁULICA		
ELEMENTO No.	DESCRIPCIÓN	ELEMENTO NO.
1	Pasador de la abrazadera	FC5346-1Y
2	Chaveta de M5 x 60	B52-5 x 60
3	Ojal	S130315Y
4	Manguera	
	Modelo "S"	CR14-9801-4
	Modelo "L"	CR14-9801-3
Modelo "EL"	CR14-9801-2	
5	Adaptador	FJ7352-3

4 PIEZAS DE PLACA DE DESLIZAMIENTO SOLDADA

ELEMENTO No.	DESCRIPCIÓN	PIEZA NO.
1	Tornillo con cabeza hexagonal M8 x 16	B26-8x16
2	Bola de la placa de deslizamiento	FC5190-7
3	Resorte	NH4D-1011
4	Retenedora de la bola	S121230Y
5	Soldadura de Placa de Deslizamiento Posterior	S121232Y
6	Pasador de nylon	FC625Y
7	Anillo de tensión del resorte	SM60-1522
8	Placa de deslizamiento posterior, placa de la retenedora	SM65-2003



Oficinas centrales en el mundo de Rotary

2700 Lanier Drive
Madison. IN 47250. USA
www.rotarylitt.com

Información de contacto para Norteamérica

Soporte técnico:
p 800.445.5438
f 800.578.5438
Correo-e userlink@rotarylitt.com
Ventas: Tel. 800.640.5438
Fax 800.578.5438
Correo-e userlink@rotarylitt.com

Información de contacto a nivel mundial

Oficinas centrales mundiales /EE.UU. 1.812.273.1622
Canadá: 1.905.812.9920
Oficinas centrales en Europa/Alemania: +49.771.9233.0
Reino Unido: +44.178.747.7711
Australasia: +60.3.7660.0285
América Latina/Caribe: +54.3488.431.608
Medio Oriente / África del Norte: +49.771.9233.0

© Vehicle Service GroupSM

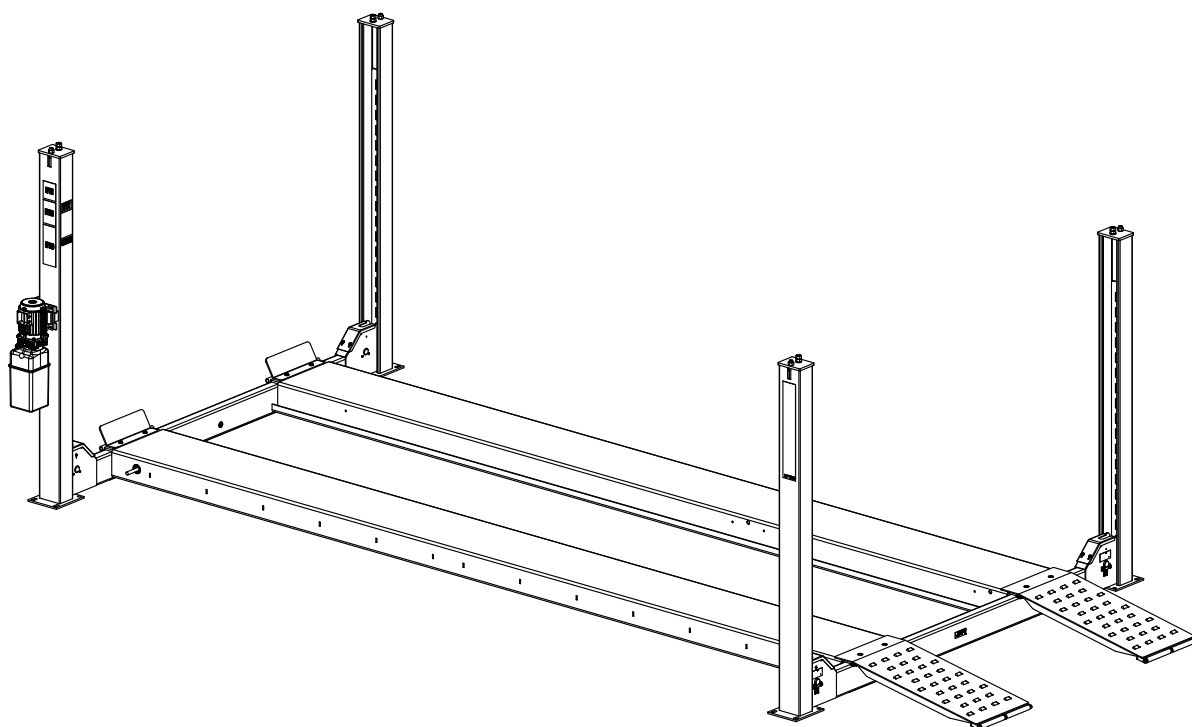
Impreso en los E.U.A., Todos los Derechos Reservados. A menos que se indique otra cosa. ROTARY y todas las otras marcas comerciales son propiedad de Dover Corporation y de sus afiliados.





AR14/SM14

(Série 100) Pont élévateur hors terre à quatre colonnes
Capacité de 6 350 kg (14 000 lb) [3 181 kg (7 000 lb) par essieu]



N
O
M
E
N
C
L
A
T
U
R
E

D
E
S
P
I
È
C
E
S

IMPORTANT : Pour commander des pièces ou une demande de service, veuillez toujours identifier le modèle et donner le numéro de série de l'unité d'alimentation. Le numéro de modèle est indiqué sur la plaque signalétique fixée sur la valve de contrôle d'air de verrouillage. Le numéro de série est situé sur le côté de l'unité d'alimentation.

DOSSIER DU
PROPRIÉTAIRE
Compléter la fiche à
droite et la conserver
en lieu sûr.

Date d'installation _____

Installé dans la baie n° _____

No de série de l'unité d'alimentation _____

Modèle de l'unité d'alimentation n° _____

No de série _____

Modèle du pont élévateur n° _____

REMARQUE : Pour le remplacement des pièces -Voir votre distributeur de pièces Rotary le plus proche.

PB 2-3-3-16

Rév. I 12/13/2022



SW-002 (Used on some models between Power Unit and Hose.)

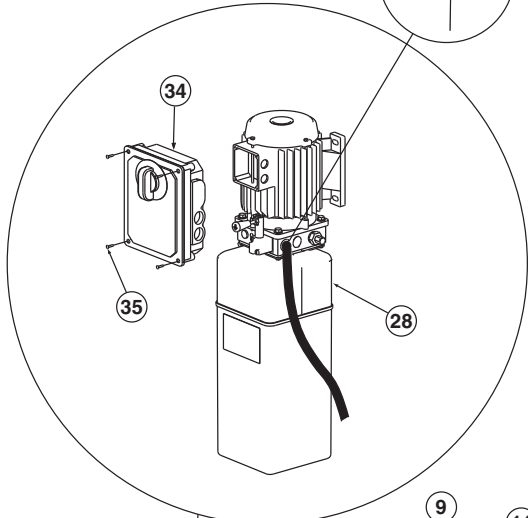
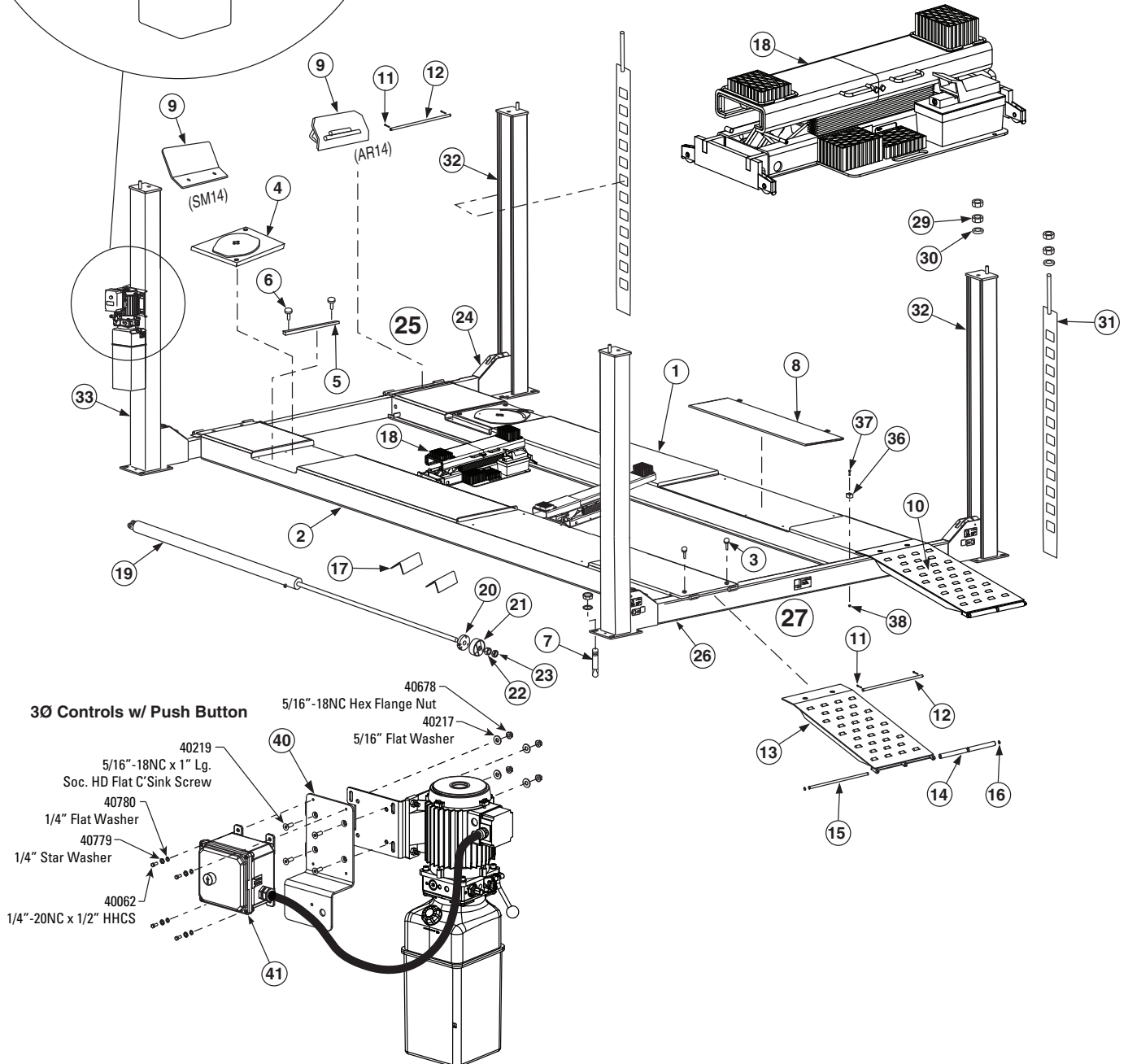


TABLEAU DU CHEMIN DE ROULEMENT

MODÈLE DU PONT ÉLÉVATEUR	Pour gaucher Ensemble chemin de roulement (Inclut vérin, câbles et poulies)	Pour droitier Ensemble chemin de roulement Construction soudée
SM14S / 158 po (401.3 cm) WB	S110429Y	S121228Y
SM14L / 182 po (462.3 cm) WB	S110428Y	S121225Y
SM14EL / 215 po (546.1 cm) WB	S110404Y	S121136Y
SM14S NB / 158 po (401.3 cm) WB	S110450Y	S121228Y
SM14L NB / 182 po (462.3 cm) WB	S110451Y	S121225Y
SM14EL NB / 215 po (546.1 cm) WB	S110452Y	S121136Y
AR14S / 158 po (401.3 cm) WB	S110447Y	S110515Y
AR14L / 182 po (462.3 cm) WB	S110448Y	S110516Y
AR14EL / 215 po (546.1 cm) WB	S110449Y	S110517Y
AR14S NB / 158 po (401.3 cm) WB	S110453Y	S110515Y
AR14L NB / 182 po (462.3 cm) WB	S110454Y	S110516Y
AR14EL NB / 215 po (546.1 cm) WB	S110455Y	S110517Y

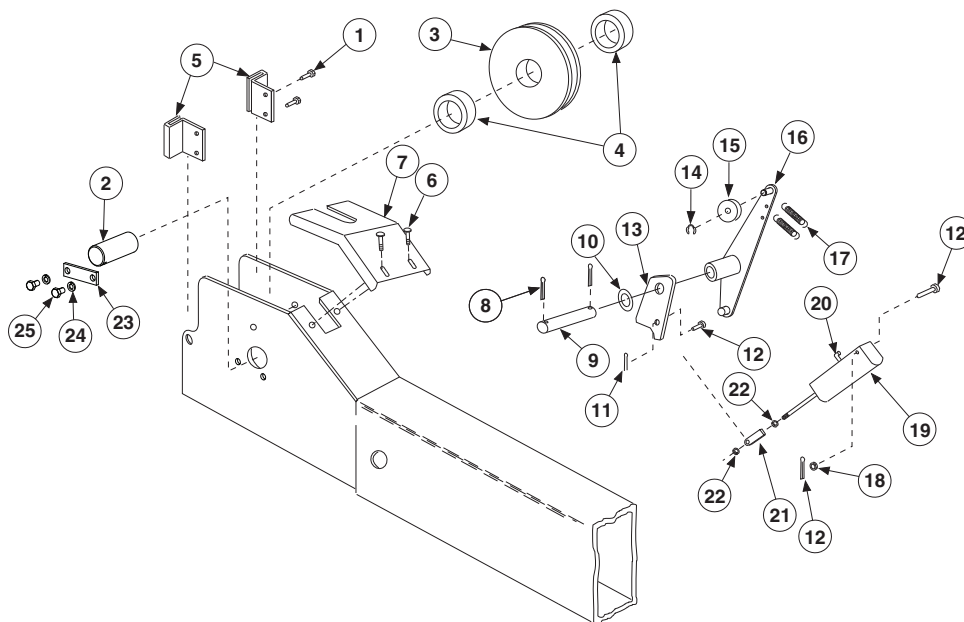


3Ø Controls w/ Push Button

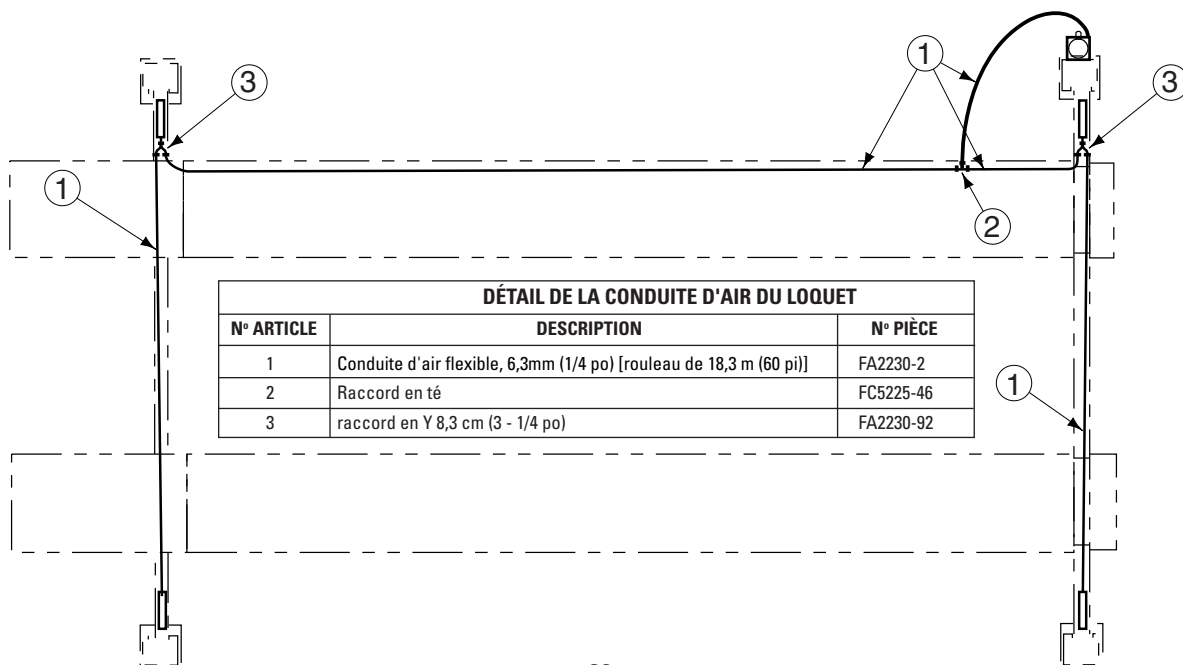
- 40219 5/16"-18NC x 1" Lg. Soc. HD Flat C'Sink Screw
- 40780 1/4" Flat Washer
- 40779 1/4" Star Washer
- 40062 1/4"-20NC x 1/2" HHCS
- 40678 5/16"-18NC Hex Flange Nut
- 40217 5/16" Flat Washer

ARTICLE	DESCRIPTION	N° PIÈCE	
1	Ensemble chemin de roulement pour droitier	Voir le tableau à la page opposée	
2	Ensemble chemin de roulement pour gaucher (Inclut vérin, câbles et poulies)	Voir le tableau à la page opposée.	
		SM14	AR14
3	M12-30 Fig. Whiz-Lock HHCS	B18-12 x 30	B18-12 x 30
4	Jauge radiale	NA	S130205
5	Bras guidage du plateau	NA	FA5153-1Y
6	Whiz-Lock HHCS M10-20	NA	B18-10 x 20
7	Boulons d'ancrage 15,9 mm (5/8 po)	FJ7386	FJ7386
8	Kit plaque de glissement arrière	NA	S100154Y
9	Butoir de roue (SM)	FC342Y	S121248Y
*10	Ensemble rampe cale (Standard)	S110405Y	S110405Y
	Ensemble rampe cale (Rallongé) (non illustré)	S110406Y	S110406Y
11	Clavette M5 X 40	B52-5 x 40	B52-5 x 40
12	Axe de charnière	FC5989Y	FC5989Y
13	Rampe cale soudée (Standard)	S121148Y	S121148Y
	Rampe cale soudée (Rallongé) (Non illustré)	S121300Y	S121300Y
14	Rouleau rampe	FC5992Y	FC5992Y
15	Goupille rouleau	FC5991Y	FC5991Y
16	Circlip	B60-16	B60-16
17	Cale de roue triangulaire	H4P-R3100	H4P-R3100
18	Cric mobile	RJ7000Y	RJ7000Y
	Cric à air - En option	SJ8000	SJ8000
19	Vérin hydraulique	S130156Y (S), S130243Y (L, EL)	S130156Y (S), S130243Y (L, EL)
20	Barre pour tirage de câble	S120706Y	S120706Y
21	Câble de retenue	S120068Y	S120068Y
22	Écrou hexagonal 1 3/8 po - 6NC	40771	40771
23	Contre-écrou hexagonal 1 3/8 po - 6NC	40773	40773
24	Étrier avant soudé	S121125Y	S121125Y

25	Ensemble étrier avant (Incluant les loquets)	S110402Y	S110402Y
26	Étrier arrière soudé	S121271Y	S121271Y
27	Ensemble étrier arrière (Incluant les loquets)	S110403Y	S110403Y
28	1Ø Unité d'alimentation	P3202 (S), P3641 (L, EL)	P3202 (S), P3641 (L, EL)
	3Ø Unité d'alimentation	P3346 (S), P3649 (L, EL)	P3346 (S), P3649 (L, EL)
29	Écrou hexagonal M20	B30-20	B30-20
30	Rondelle plate M20	B41-20	B41-20
31	Barre de verrouillage	S121154Y	S121154Y
32	Colonne	S110445Y	S110445Y
33	Colonne de l'unité d'alimentation	S110446Y	S110446Y
34	Boîte contrôle	FA7366	FA7366
	Boîtier à condensateur	FA7147-1	FA7147-1
	Couvercle boîtier à condensateur	FA7366-1	FA7366-1
	Interrupteur à tambour	FA7364	FA7364
	Levier interrupteur à tambour	FA7364-1	FA7364-1
35	M5 x 45 PHMS plaqué	41672	41672
36	Butoir en caoutchouc	FC7112Y	FC7112Y
37	M6 x 35 HHCS	B10-6x35	B10-6x35
38	M6 L'écrou	B30-6	B30-6
39	Ø6mm Plat Rondelle	B41-6	B41-6
40	3Ø Control Box Mounting Bracket - 4 Post	FA9154-1	FA9154-1
41	3Ø Control Box	FA9147	FA9147
	25 Amp Contactor	FA9147-2	FA9147-2
	Contacteur Coil, 208-240V	FA9147-6	FA9147-6
	Contacteur Coil, 575V	FA9147-12	FA9147-12

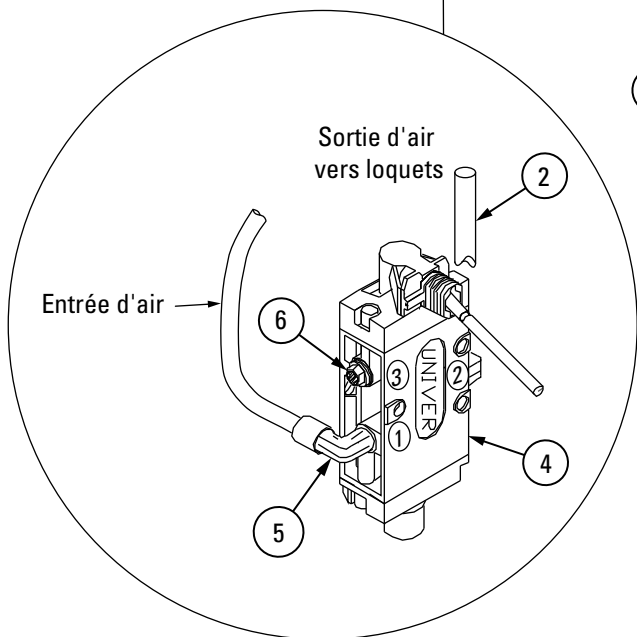
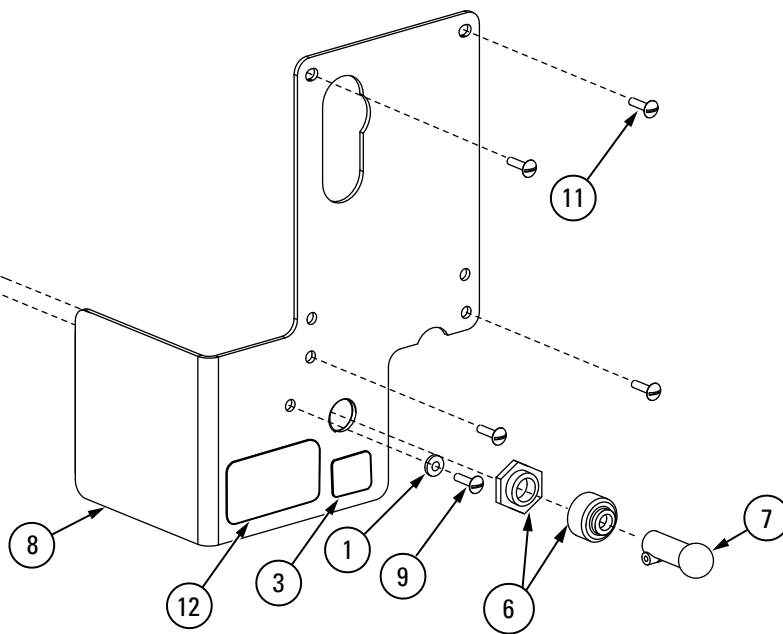
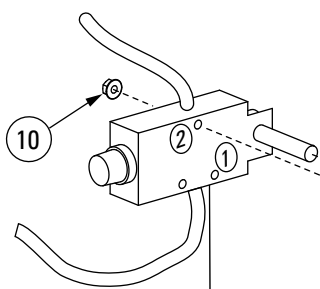
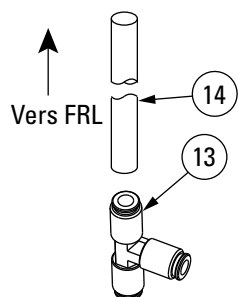


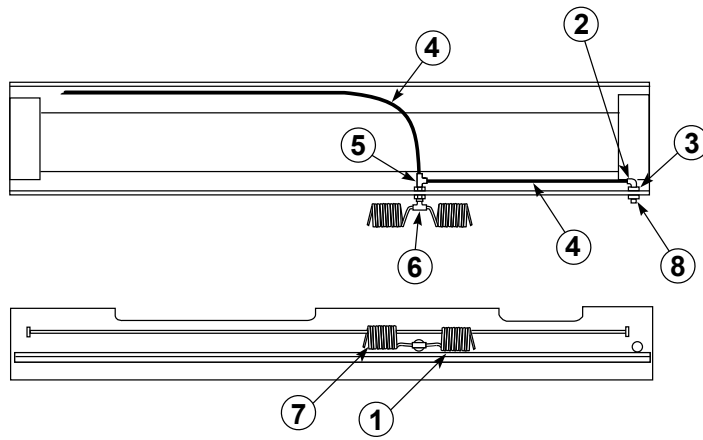
DÉTAIL DE L'EXTRÉMITÉ DE L'ÉTRIER			DÉTAIL DE L'EXTRÉMITÉ DE L'ÉTRIER		
ARTICLE	DESCRIPTION	N° PIÈCE	ARTICLE	DESCRIPTION	N° PIÈCE
1	Vis à tête fraisée à empreinte cruciforme M8 x 12	B24-8 x 12	14	Circlip M9	B60-9
2	Axe poulie	FC5981-1Y	15	Galet mou de câble	FC553-21Y
3	Poulie	FC5977Y	16	Séparateur à manivelle	S121272Y
4	Entretoise poulie étrier	S130286Y	17	Ressort d'extension	FC522-25Y
5	Coulisseau	FC622Y	18	Rondelle plate M6	B41-6
6	Rivet sapin en nylon	460440	19	Cylindre à air	S130061
7	Dispositif de protection	FC5985Y	20	Coude	FC5224-39
8	Clavette 4 x 40	B52-4 x 40	21	Chape	FC5993Y
9	Axe de verrouillage	FC5901-7Y	22	Écrou hexagonal 1/4 po-28NF	40622
10	Rondelle M20	B41-20	23	Plaque de verrouillage	H4P-3006
11	Goupille fendue 2 x 20	B52-2 x 20	24	Rondelle de blocage M10	B40 x 10
12	Axe de chape	S130287Y	25	Vis d'assemblage à tête hexagonale M16	B10-10 x 16
13	Loquet	FC5986Y			



DÉTAIL DE LA VALVE DE PURGE DU SAS D'AIR

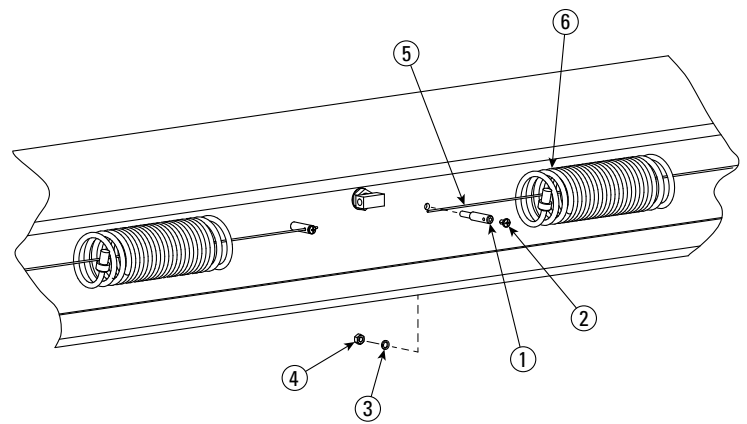
N° ARTICLE	DESCRIPTION	N° PIÈCE
1	Rondelle plate Ø 4 mm	B41-4
2	Flexible 6,3 mm (1/4 po)	FC2230-2
3	Plaque signalétique	NP280
4	Ensemble contrôle	T140073
5	Coude rotatif	T140074
6	Filtre/Silencieux	PSV-01
7	Manette contrôle d'air	T140119
8	Support commande 1Ø	S110274Y
	Support commande 3Ø	S110286Y
9	M4-30 PHMS	B23-4-30
10	Écrou de blocage M4 en nylon	B33-4
11	M5 x 15 PHMS 1Ø	40277
	M5 x 50 PHMS 3Ø	41696
12	Plaque signalétique	NP864
13	Raccord en té	FA2242-1
14	Flexible 9,5 mm (3/8 po) [rouleau de 12,2 m (40 pi)]	FA2230-15



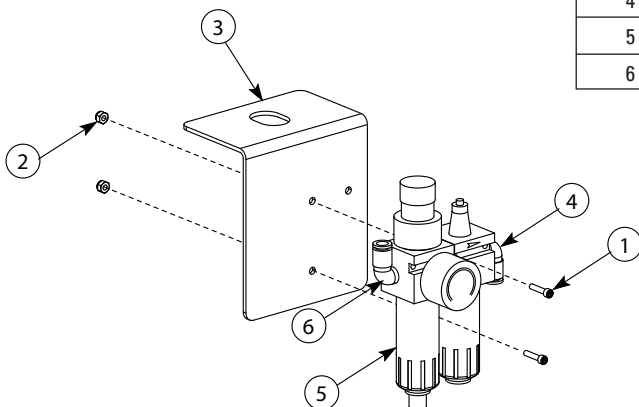


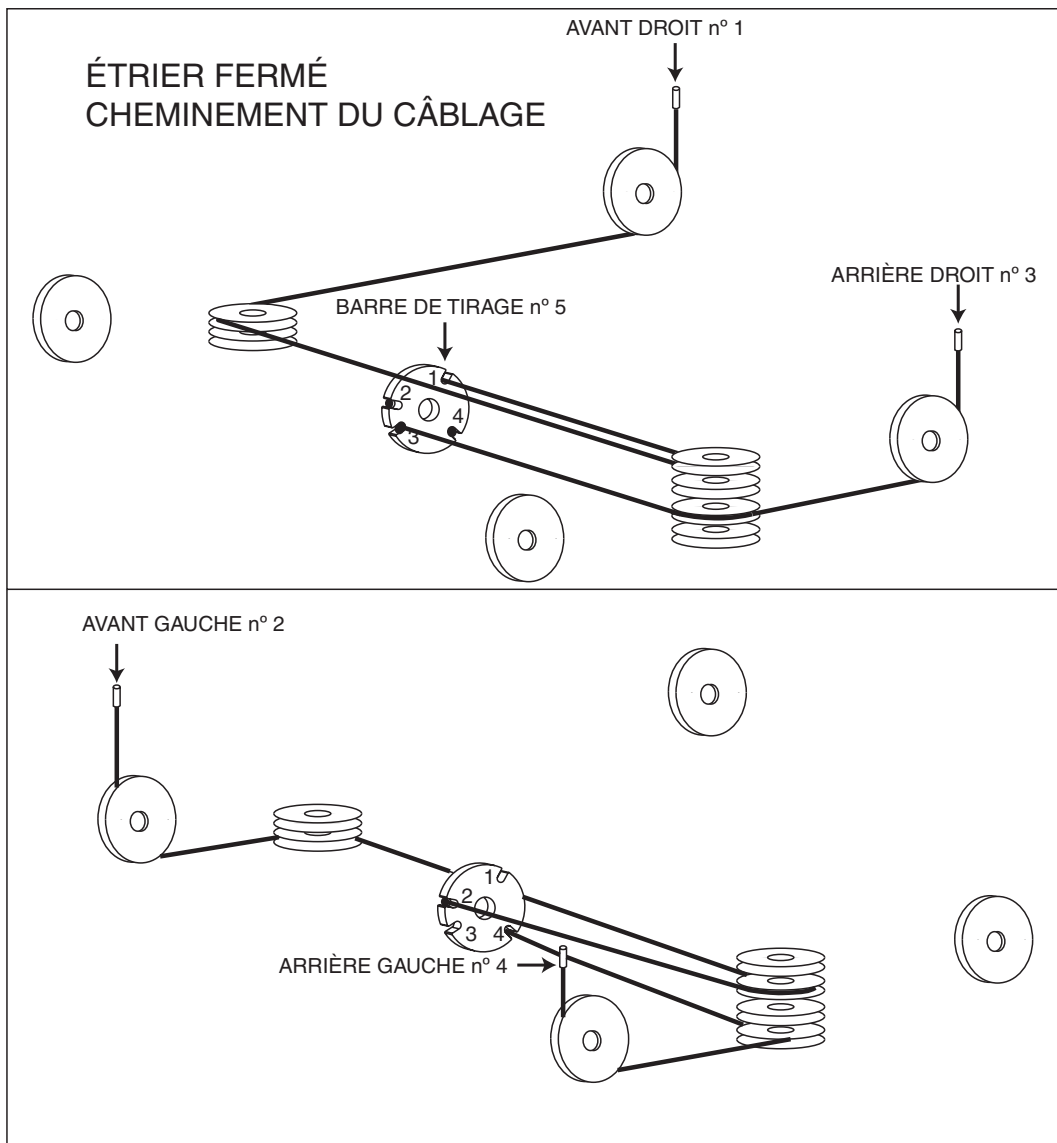
PIÈCES CONDUITE D'AIR INTERNE			
N° ARTICLE	DESCRIPTION	N° PIÈCE	N° PIÈCE
		Modèle S	Modèles L, EL
1	Flexible spiralé avant	FC147-14	FC147-14
2	Coude mâle	FC147-7	FC147-7
3	Passe-cloison femelle	FC147-1	FC147-1
4	Flexible 9,5 mm (3/8 po) [rouleau de 12,2 m (40 pi)]	FA2230-15	FA2230-15
5	Raccord en té mâle de distribution	FC147-3	FC147-3
6	Té réduit ou agrandi sur l'embranchement mâle	FC147-5	FC147-5
7	Flexible spiralé arrière	FC147-14	S130160
8	Bouchon hexagonal 6,3 mm (1/4 po)	40639	40639

DÉTAIL DU CÂBLE DE RETENUE				
N° ARTICLE	DESCRIPTION	N° PIÈCE	N° PIÈCE	N° PIÈCE
		Modèle S	MODÈLE L	MODÈLE EL
1	Tige de guidage	H4P-3007	H4P-3007	H4P-3007
2	Vis à tête tronconique à empreinte cruciforme M6 x 10 mm	B23-6-10	B23-6-10	B23-6-10
3	Rondelle éventail Ø8 mm	B49-8	B49-8	B49-8
4	Écrou hexagonal M8	B30-8	B30-8	B30-8
5	Câble de retenue conduite d'air avant Câble de retenue conduite d'air arrière	S110464Y S110464Y	S110464Y S110463Y	S110464Y S110462Y
6	Flexible en spirale	-	-	-



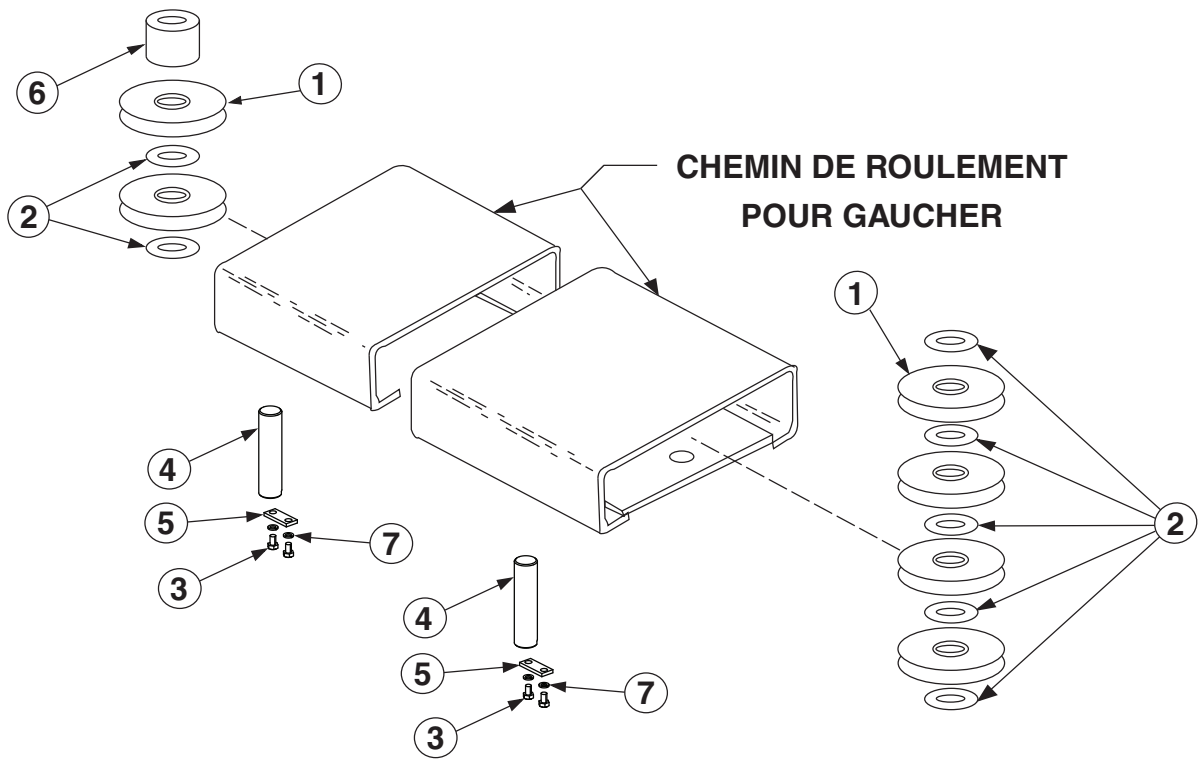
DÉTAIL FRL			
N° ARTICLE	DESCRIPTION	SM14	AR14
1	Vis d'assemblage à tête cylindrique à six pans creux M4-12	B23-4-12	B23-4-12
2	Écrou de blocage M4 en nylon	B33-4	B33-4
3	Support adaptateur	S120674Y	S120674Y
4	Coude	FC5185-96	FC147-7
5	Filtre/régulateur/lubrifiant	S130080	S130080
6	Coude	FC147-7	FC147-7



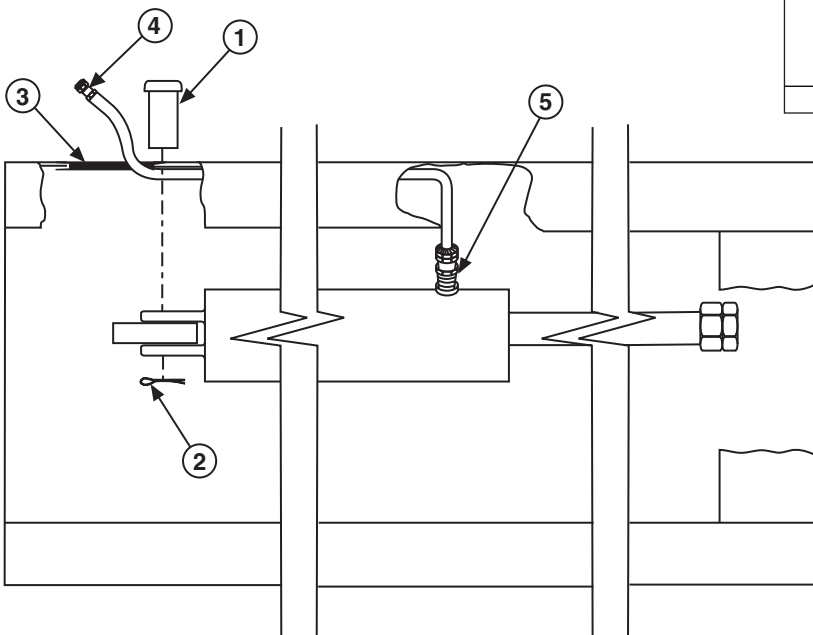


CÂBLES		N° PIÈCE						
		ARTICLE N°	DESCRIPTION	SM/AR14			SM/AR14NB	
				4 m (158 po)	4,6 m (182 po)	5,5 m (215 po)	4 m (158 po)	4,6m (182 po)
1	Câble avant droit	S130255Y	S130257Y	S130261Y	S130318Y	S130320Y	S130324Y	
2	Câble avant gauche	S130254Y	S130256Y	S130260Y	S130317Y	S130319Y	S130323Y	
3	Câble arrière droit	S130259Y	S130259Y	S130259Y	S130322Y	S130322Y	S130322Y	
4	Câble arrière gauche	S130258Y	S130258Y	S130258Y	S130321Y	S130321Y	S130321Y	
5	Barre de tirage	S120706Y	S120706Y	S120706Y	S120706Y	S120706Y	S120706Y	

** LE DISPOSITIF DE RETENUE DU CÂBLE N'EST PAS MONTRÉ POUR CLARIFIER L'ILLUSTRATION DE L'ACHEMINEMENT DES CÂBLES*

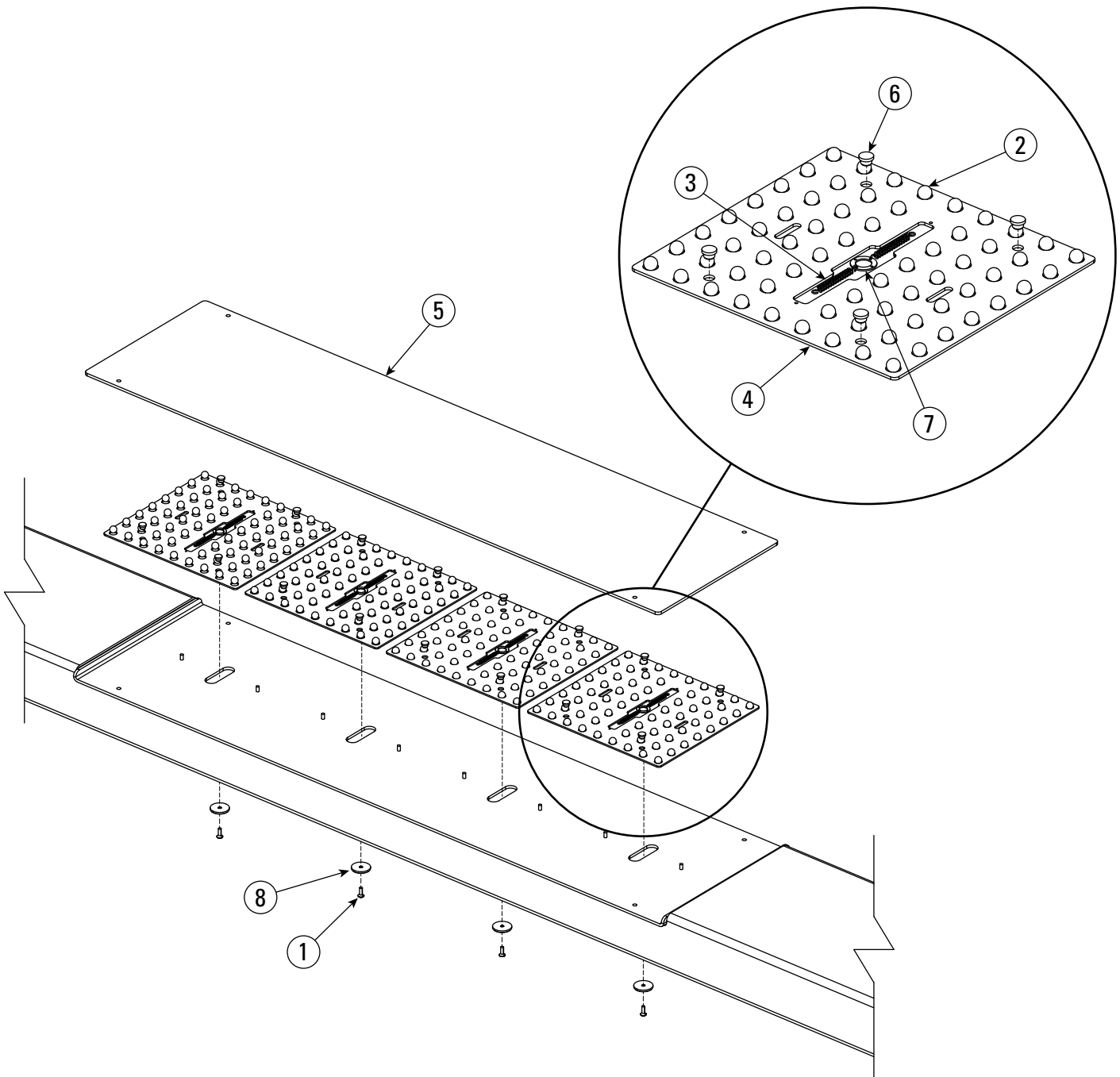


DÉTAIL DE LA POULIE		
N° ARTICLE	DESCRIPTION	N° PIÈCE
1	Poulie	FC5977Y
2	Coussinet en plastique	S130246Y
3	Vis d'assemblage à tête hexagonale M10 x 16	B10-10 x 16
4	Axe poulie	FC5983Y
5	Plaque de verrouillage	H4P-1020
6	Entretoise poulie chemin de roulement CF	S130288Y
7	Rondelle	B40-10



DÉTAIL DU FLEXIBLE HYDRAULIQUE		
N° ARTICLE	DESCRIPTION	N° ARTICLE
1	Axe de chape	FC5346-1Y
2	Clavette M5 X 60	B52-5 x 60
3	Passe-câble	S130315Y
4	Flexible	
	Modèle "S"	CR14-9801-4
	MODÈLE "L"	CR14-9801-3
	MODÈLE "EL"	CR14-9801-2
5	Adaptateur	FJ7352-3

PIÈCES POUR LES 4 PLAQUES DE GLISSEMENT WS		
N° ARTICLE	DESCRIPTION	N° PIÈCE
1	Vis à tête plate M8 X 16	B26-8x16
2	Bille de plaque de glissement	FC5190-7
3	Ressort	NH4D-1011
4	Support bille	S121230Y
5	Plaque de glissement arrière soudée	S121232Y
6	Goupille en nylon	FC625Y
7	Anneau tension du ressort	SM60-1522
8	Rondelle de retenue Plaque de glissement arrière	SM65-2003



REMARQUES

Rotary Siège social mondial

2700 Lanier Drive
Madison, IN 47250. É.-U
www.rotarylif.com

Information pour nous contacter en Amérique du Nord

Soutien Tech. :
Tél 800.445.5438
Fax 800.578.5438
c userlink@rotarylif.com
Ventes : tél 800.640.5438
Fax 800.578.5438
c userlink@rotarylif.com

Informations de contact dans le monde entier

International/É.-U. : 1.812.273.1622
Canada : 1.905.812.9920
Siège social européen/Allemagne : +49.771.9233.0
Royaume-Uni : +44.178.747.7711
Australasie : +60.3.7660.0285
Amérique latine/Antilles : +54.3488.431.608
Moyen-Orient/Afrique du Nord : +49.771.9233.0

© Vehicle Service GroupSM

Imprimé aux É.-U., Tous droits réservés.
Sauf indication contraire. ROTARY et
toutes les autres marques de commerce
sont la propriété de Dover Corporation et
de ses filiales.

